

WILSTAR SS DIXIEROSE-RED-ET VG-87 VVVVV
SELLS AS LOT 1

1

WILSTAR SS DIXIEROSE-RED-ET

63193575 Very Good-87 VVVVV @ 2-05
Born: September 2, 2006 • Donor Dam
2-00 2x 237d 18112 4.3 780 3.1 584 RIP

- All-American R&W Fall Yrlg in Milk 2008
- 1st Fall Yrlg in Milk Grand International 2008
- Embryos exported

Bred: May 1, 2009 to Scientific Debonair-Red-ETS

1A FIVE #1 EMBRYOS
Sire: KHW Kite Advent-Red-ET

Pursuit September Storm-ET

6820564C EX-CAN GM 2/07 *RC *TV *TL
PTA +222M +50F +1P 99R 4/09
PTA +0.0PL 2.91SCS -1.4DPR
PTA +2.89T +2.41UDC +3.63FLC 99R 4/09
GTPI +1542M

Farmdale Integrity Dixie

120662388 Excellent-94 EEEVE 3E *RC
5-00 2x 365d 38220 4.1 1564 3.2 1230
7-05 2x 365d 28520 4.0 1142 3.3 935
3-06 2x 305d 22060 3.9 860 3.1 676
2-03 2x 305d 21730 3.8 824 3.2 700
Life: 2479d 179670 4.2 7489 3.5 6252

- Nom Jr All-American 5-Yr-Old 2002
- 2nd 5-Yr-Old NAILE 2002
- Junior All-Wisconsin Aged Cow 2003
- 3rd Aged Cow WI Championship Show 2003
- Embryos exported worldwide

Maughlin Storm-ET

5457798 EX-CAN GM 8/04 *B/R *TV *TL
PTA +192M +36F +6P 99R 4/09
PTA +1.91T +1.60UDC +2.04FLC GTPI +1424M

Glen Drummond Shimmer

6185591C VG-85-2YR-CAN *4 STAR
3-10 2x 365d 32608 4.2 1376 3.2 1036
Life: 3 Lact 121844 4.3 5229 3.4 4107

Robthom Integrity-ET

2150948 Excellent-96 GM 2/99 *TV *TL
PTA +381M +4F -4P 99R 4/09
PTA +1.60T +1.44UDC +.12FLC GTPI +1067M

Farmdale South Dimple

120662333 Very Good-86
7-02 2x 343d 35350 3.9 1378 3.5 1238
4-05 2x 305d 27110 3.9 1052 3.4 913
5-08 2x 305d 24800 3.9 968 3.3 819

Southwind Bell of Bar-Lee

1964484 Excellent-93 GM 2/98 *CV *TL *TD
PTA -596M +9F -1P 99R 4/09
TPA +.09T -.33UDC +.98FLC GTPI +948G

Farmdale Dakota Drew

14904159
7-02 2x 305d 27070 4.2 1131 3.1 831
8-03 2x 305d 24340 4.2 1031 3.3 793
5-11 2x 305d 22300 4.3 965 3.2 721
Life: 2104d 144040 4.2 6035 3.1 4517



FARMDALE INTEGRITY DIXIE *RC EX-94 3E
DAM OF LOTS 1, 4, 9, 12, 13 & 17 THRU 23.

2

WILSTAR FORTN DROSE RUBY-ET

64470406 *RC
Born: July 10, 2008

To-Mar D-Fortune-ET

129922003 Excellent-91 *TV *TL
PTA -566M +3F +18P 93R 4/09
PTA +1.3PL 2.82SCS +1.0DPR
PTA +2.63T +2.48UDC +1.33FLC 82R 4/09
GTPI +1571G

Wilstar SS Dixierose-Red-ET

63193575 Very Good-87 VVVV @ 2-05
2-00 2x 237d 18112 4.3 780 3.1 584 RIP
• All-American R&W Fall Yrlg in Milk 2008
• 1st Fall Yrlg in Milk Grand International 2008
• Embryos exported
Sells as Lot 1

Regancrest Elton Durham-ET

2250783 Excellent-90 GM 8/01 *TR *CV *TL
PTA +46M -23F +17P 99R 4/09
PTA +3.05T +3.08UDC +2.59FLC GTPI +1564M

C Plushanski Bstar Flute-ET

14173141 Excellent-92 EEEVE 2E GMD DOM
6-00 2x 365d 37430 4.9 1818 3.4 1289
Life: 1892d 140460 4.7 6588 3.6 5126

Pursuit September Storm-ET

6820564C EX-CAN GM 2/07 *RC *TV *TL
PTA +222M +50F +1P 99R 4/09
PTA +2.89T +2.41UDC +3.63FLC GTPI +1542M

Farmdale Integrity Dixie

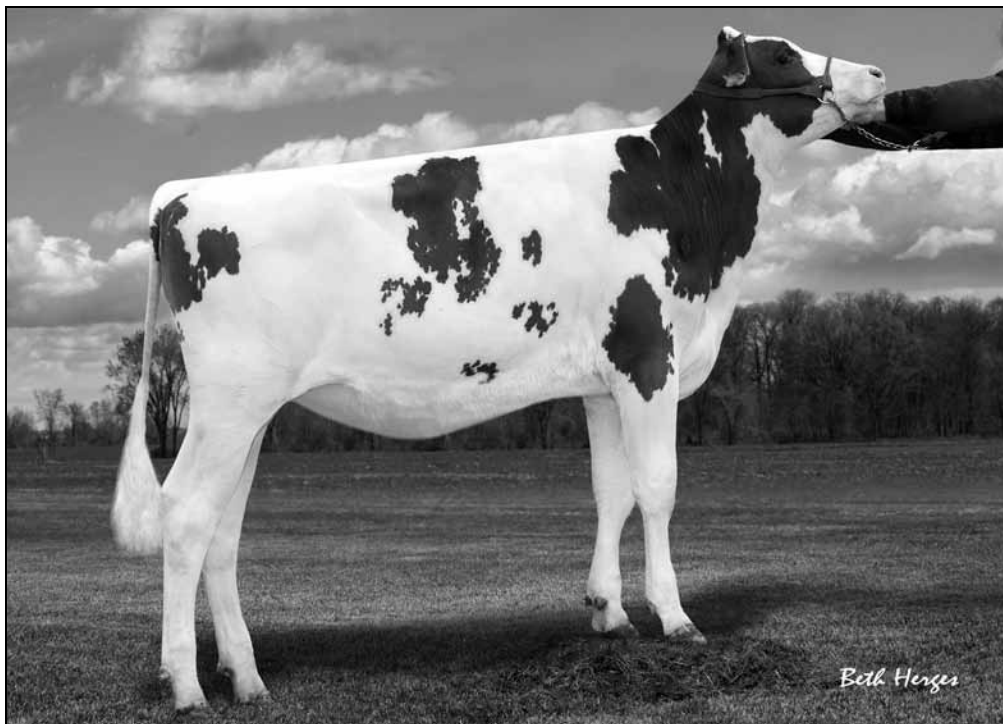
120662388 Excellent-94 EEEVE 3E *RC
5-00 2x 365d 38220 4.1 1564 3.2 1230
7-05 2x 365d 28520 4.0 1142 3.3 935
3-06 2x 305d 22060 3.9 860 3.1 676
2-03 2x 305d 21730 3.8 824 3.2 700
Life: 2479d 179670 4.2 7489 3.5 6252
• Nom Jr All-American 5-Yr-Old 2002
• Junior All-Wisconsin Aged Cow 2003
• Embryos exported worldwide

Robthom Integrity-ET

2150948 Excellent-96 GM 2/99 *TV *TL
PTA +381M +4F -4P 99R 4/09
PTA +1.60T +1.44UDC +.12FLC GTPI +1067M

Farmdale South Dimple

120662333 Very Good-86
7-02 2x 343d 35350 3.9 1378 3.5 1238
4-05 2x 305d 27110 3.9 1052 3.4 913
5-08 2x 305d 24800 3.9 968 3.3 819



WILSTAR AD ROSES REBA-RED
SELLS AS LOT 3

3

WILSTAR AD ROSES REBA-RED

64470411
Born: September 7, 2008

KHW Kite Advent-Red-ET

133002953 Excellent-94 *TV *TL *TD
PTA -851M -5F -17P 99R 4/09
PTA +1.9PL 3.04SCS +2.3DPR
PTA +3.39T +3.15UDC +2.21FLC 99R 4/09
GTPI +1477M

Wilstar SS Dixierose-Red-ET

63193575 Very Good-87 VVVV @ 2-05
2-00 2x 237d 18112 4.3 780 3.1 584 RIP
• All-American R&W Fall Yrlg in Milk 2008
• 1st Fall Yrlg in Milk Grand International 2008
• Embryos exported
Sells as Lot 1

Markwell Kite-ET

128460878 EX-CAN *RC *TV *TL
PTA -858M -12F -26P 99R 4/09
PTA +2.94T +2.02UDC +.34FLC GTPI +948M

Kamps-Hollow Altitude-ET

129136431 Excellent-95 EEEEE 2E DOM *RC *CV
7-00 2x 365d 39690 4.7 1849 3.5 1385
Life: 1844d 144460 4.4 6295 3.7 5288

Pursuit September Storm-ET

6820564C EX-CAN GM 2/07 *RC *TV *TL
PTA +222M +50F +1P 99R 4/09
PTA +2.89T +2.41UDC +3.63FLC GTPI +1542M

Farmdale Integrity Dixie

120662388 Excellent-94 EEEVE 3E *RC
5-00 2x 365d 38220 4.1 1564 3.2 1230
7-05 2x 365d 28520 4.0 1142 3.3 935
3-06 2x 305d 22060 3.9 860 3.1 676
2-03 2x 305d 21730 3.8 824 3.2 700
Life: 2479d 179670 4.2 7489 3.5 6252

- Nom Jr All-American 5-Yr-Old 2002
- Junior All-Wisconsin Aged Cow 2003
- Embryos exported worldwide

Robthom Integrity-ET

2150948 Excellent-96 GM 2/99 *TV *TL
PTA +381M +4F -4P 99R 4/09
PTA +1.60T +1.44UDC +.12FLC GTPI +1067M

Farmdale South Dimple

120662333 Very Good-86
7-02 2x 343d 35350 3.9 1378 3.5 1238
4-05 2x 305d 27110 3.9 1052 3.4 913
5-08 2x 305d 24800 3.9 968 3.3 819