



HARBAUGH BELLA EX-92 EEEEE
DAM OF LOTS 101 THRU 104



ROYLANE RAIDER CAMILLE EX-91 EEVEE 3E DOM
3RD DAM OF LOTS 101 THRU 104

101

WILSTAR SHOTTLE BELLA-ET

64470337
Born: June 1, 2007
P9 PTP1 +2020 PTA +1609M +70F +52P +3.59T

Bred: Nov. 3, 2008 to Ensenada Taboo Planet-ET

Carol Prelude Mtoto-ET

6001001962 GM 1/08 *TV *TL
PTA +1061M +40F +21P 99R 4/09
PTA +.99T +.80UDC +1.16FLC GTPI +1641M

Condon Aero Sharon

5373153C EX-91-GBR
5-07 2x 305d 36230 4.3 1561 3.3 1179
4-00 2x 305d 25286 4.3 1508 3.4 1202

Regancrest Elton Durham-ET

2250783 Excellent-90 GM 8/01 *TR *CV *TL
PTA +46M -23F +17P 99R 4/09
PTA +3.05T +3.08UDC +2.59FLC GTPI +1564M

Harbaugh Encore Gloria

123034713 Excellent-91 EEEEE
6-05 2x 365d 30219 3.5 1055 2.9 864"
5-05 2x 315d 23030 3.7 846 3.1 723
8-00 2x 305d 21040 4.1 856 3.1 659
9-02 2x 305d 18230 3.9 707 3.3 609
3-01 2x 305d 17390 3.8 661 3.2 562
Life: 1958d 122590 3.8 4632 3.2 3924

Picston Shottle-ET

GBR 598172 EX-95-GBR GM 8/08 *TV *TL
PTA +2165M +101F +63P 99R 4/09
PTA +4.0PL 2.66SCS -2.0DPR
PTA +4.20T +3.31UDC +3.10FLC 99R 4/09
GTPI +2269M

Harbaugh Bella

207515413 Excellent-92 EEEEE *TV
CTPI +1767
3-05 2x 365d 44340 4.2 1842 3.5 1535
2-01 2x 365d 31930 3.5 1116 3.4 1085
• Six sons in AI & embryos exported

3rd Dam

Roylane Raider Camille EX-91 EEVEE 3E DOM
7-02 2x 365d 31508 3.7 1149 2.9 911"
Life: 2230d 171540 3.8 6475 3.0 5128

4th Dam

Roylane Blackstar Belle-ET VG-87 EX-MS
3-11 2x 365d 34380 3.7 1262 2.8 949

5th Dam

Western-Cascade Mark Bella EX-91 GMD DOM
3-06 2x 365d 36360 3.7 1354 3.0 1091

6th Dam

Western-Cascade Bell Glory EX-90 2E GMD DOM
7-10 2x 305d 34840 3.3 1155 3.0 1037
Life: 1525d 139210 3.6 5018 3.1 4295

7th Dam

Riceville Peachum Glory-OC
2-01 2x 106d 5490 4.0 221 3.2 177

8th Dam

Echomont Citation Glory-OC VG-85
5-04 2x 365d 27220 3.8 1050

9th Dam

Walsterway Count Glory EX-90 3E
7-05 2x 365d 27110 4.4 1183
Life: 2829d 153424 4.6 7029

10th Dam

Walsterway Regius Gerry EX-90
6-04 2x 365d 29820 4.9 1448

102

WILSTAR ELEGANT BELLA-ET

63193583 Very Good-85 VG-MS @ 2-05
Born: September 20, 2006 CTPI +1796
1-11 2x 231d 20585 4.1 846 3.0 625 RIP

Bred: April 21, 2009 to England-Ammon Million-ET

• Full brother to Bella & Bonita in AI

Picston Shottle-ET

GBR 598172 EX-95-GBR GM 8/08 *TV *TL
PTA +2165M +101F +63P 99R 4/09
PTA +4.0PL 2.66SCS -2.0DPR
PTA +4.20T +3.31UDC +3.10FLC 99R 4/09
GTPI +2269M

Harbaugh Bella

207515413 Excellent-92 EEEEE *TV
CTPI +1767
3-05 2x 365d 44340 4.2 1842 3.5 1535
2-01 2x 365d 31930 3.5 1116 3.4 1085
• Six sons in AI & embryos exported

103

WILSTAR ELEGANT BONITA-ET

63193585 Good Plus-83 @ 2-05
Born: September 24, 2006 CTPI +1700
2-01 2x 163d 13057 3.9 512 3.3 431 RIP

Bred: March 8, 2009 to Ensenada Taboo Planet-ET

Carol Prelude Mtoto-ET

6001001962 GM 1/08 *TV *TL GTPI +1641M

Condon Aero Sharon

5373153C EX-91-GBR
5-07 2x 305d 36230 4.3 1561 3.3 1179
4-00 2x 305d 25286 4.3 1508 3.4 1202

Regancrest Elton Durham-ET

2250783 Excellent-90 GM 8/01 *TR *CV *TL
PTA +46M -23F +17P 99R 4/09
PTA +3.05T +3.08UDC +2.59FLC GTPI +1564M

Harbaugh Encore Gloria

123034713 Excellent-91 EEEEE
6-05 2x 365d 30219 3.5 1055 2.9 864"
5-05 2x 315d 23030 3.7 846 3.1 723
8-00 2x 305d 21040 4.1 856 3.1 659
9-02 2x 305d 18230 3.9 707 3.3 609
Life: 1958d 122590 3.8 4632 3.2 3924

3rd Dam

Roylane Raider Camille EX-91 EEVEE 3E DOM
7-02 2x 365d 31508 3.7 1149 2.9 911"
Life: 2230d 171540 3.8 6475 3.0 5128

4th Dam

Roylane Blackstar Belle-ET VG-87 EX-MS
3-11 2x 365d 34380 3.7 1262 2.8 949

5th Dam

Western-Cascade Mark Bella EX-91 GMD DOM
3-06 2x 365d 36360 3.7 1354 3.0 1091

6th Dam

Western-Cascade Bell Glory EX-90 2E GMD DOM
7-10 2x 305d 34840 3.3 1155 3.0 1037
Life: 1525d 139210 3.6 5018 3.1 4295

7th Dam

Riceville Peachum Glory-OC
2-01 2x 106d 5490 4.0 221 3.2 177

8th Dam

Echomont Citation Glory-OC VG-85
5-04 2x 365d 27220 3.8 1050

9th Dam

Walsterway Count Glory EX-90 3E
7-05 2x 365d 27110 4.4 1183
Life: 2829d 153424 4.6 7029

10th Dam

Walsterway Regius Gerry EX-90
6-04 2x 365d 29820 4.9 1448

104

104A SIX #1 EMBRYOS

Sire: Picston Shottle-ET

R-E-W Buckeye-ET

130588960 *TV *TL
PTA +1914M +49F +46P 99R 4/09
PTA +2.1PL 2.96UDC -0.9DPR
PTA +2.52T +2.48UDC +2.48FLC 96R 4/09
GTPI +1813G

Harbaugh Bella

207515413 Excellent-92 EEEEE *TV
CTPI +1767
3-05 2x 365d 44340 4.2 1842 3.5 1535
2-01 2x 365d 31930 3.5 1116 3.4 1085
• Six sons in AI & embryos exported

WILSTAR BUCKEYE BEYONCE-ET

63193594
Born: November 22, 2006 • Donor Dam
P9 PTPI +1791

Bred: Sept. 22, 2008 to Wilstar-RS Out Altitude-ET

• Full brother in AI

Mara-Thon BW Marshall-ET

2290977 Very Good-86 GM 8/07 *TV *TL
PTA +1654M +34F +38P 99R 4/09
PTA +2.27T +2.16UDC +2.87FLC GTPI +1570M

Mayerlane Rud Bubble-ET

120536177 Very Good-86 VG-MS GMD DOM *TV
1-11 2x 365d 35990 3.7 1343 3.2 1136

Regancrest Elton Durham-ET

2250783 Excellent-90 GM 8/01 *TR *CV *TL
PTA +46M -23F +17P 99R 4/09
PTA +3.05T +3.08UDC +2.59FLC GTPI +1564M

Harbaugh Encore Gloria

123034713 Excellent-91 EEEEE
6-05 2x 365d 30219 3.5 1055 2.9 864"
5-05 2x 315d 23030 3.7 846 3.1 723
8-00 2x 305d 21040 4.1 856 3.1 659
9-02 2x 305d 18230 3.9 707 3.3 609
Life: 1958d 122590 3.8 4632 3.2 3924

104 1/2 FEMALE-ET

Due: May 14, 2009

Sire: Picston Shottle-ET

3rd thru 10th Dams

Roylane Raider Camille EX-91 EEVEE 3E DOM
7-02 2x 365d 31508 3.7 1149 2.9 911"
Life: 2230d 171540 3.8 6475 3.0 5128

Roylane Blackstar Belle-ET VG-87 EX-MS
3-11 2x 365d 34380 3.7 1262 2.8 949

Western-Cascade Mark Bella EX-91 GMD DOM
3-06 2x 365d 36360 3.7 1354 3.0 1091

Western-Cascade Bell Glory EX-90 2E GMD DOM
7-10 2x 305d 34840 3.3 1155 3.0 1037

Life: 1525d 139210 3.6 5018 3.1 4295
Riceville Peachum Glory-OC

2-01 2x 106d 5490 4.0 221 3.2 177
Echomont Citation Glory-OC VG-85

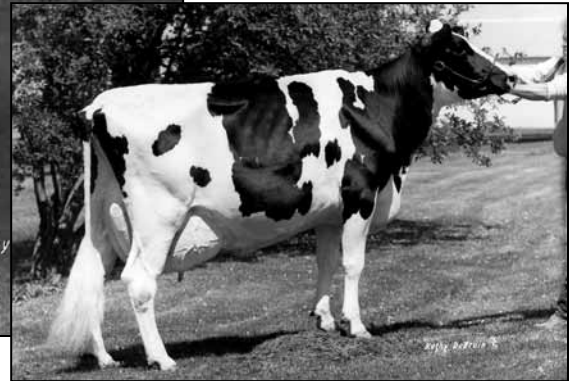
5-04 2x 365d 27220 3.8 1050
Walsterway Count Glory EX-90 3E

7-05 2x 365d 27110 4.4 1183
Life: 2829d 153424 4.6 7029

Walsterway Regius Gerry EX-90
6-04 2x 365d 29820 4.9 1448



OPSAI RUDOLPH SADIE-ET EX-92 2E GMD DOM
DAM OF LOT 105



OPSAI MARK SAPPHIRE-ET EX-93 4E GMD DOM
2ND DAM OF LOT 105

105

Opsal Finley-ET

120780521 GM 1/08 *TV *TL
PTA +1069M +12F +30P 99R 4/09
PTA +0.9PL 3.00SCS +0.9DPR
PTA +2.38T +2.16UDC +.41FLC 99R 4/09
GTPI +1566M

Opsal Rudolph Sadie-ET

126888058 Excellent-92 VEEVE 2E GMD DOM *TV
GTPI +1781G 4/09
3-02 2x 365d 38420 5.3 2026 3.4 1320
5-10 2x 365d 38120 4.8 1847 3.5 1317
2-01 2x 365d 30370 4.7 1424 3.3 1009
Life: 1385d 126300 5.0 6274 3.5 4411

- Sixteen sons in AI & Embryos exported
- Dam of three EX & thirteen VG daughters

OPSAI FINLEY SILK-ET

134742256 Very Good-87 EEVVV
Born: October 4, 2003
CTPI +1658
3-09 2x 352d 32850 4.0 1313 3.5 1141
2-02 2x 365d 32670 4.2 1360 3.3 1077
4-10 2x 257d 27131 3.9 1054 3.3 882 RIP

Bred: Nov. 18, 2008 to England-Ammon Million-ET

Shen-Val NV LM Formation-ET

2163822 Very Good-85 GM 2/01 *TV *TL
PTA +870M -16F +9P 99R 4/09
PTA +1.24T +1.81UDC +.47FLC GTPI +1306M

De-Su Opsal Ethan Fiona-ET

15788871 Excellent-90 EEVVV GMD DOM *CV *BL
3-07 2x 365d 39670 3.9 1543 3.4 1346
Life: 1304d 112120 3.8 4290 3.5 3892

Startmore Rudolph-ET

5470579C EX-CAN GM 2/04 *TV *TL
PTA +865M +16F +26P 99R 4/09
PTA +.88T +.94UDC -.54FLC GTPI +1535M

Opsal Mark Sapphire-ET

13800480 Excellent-93 EEVEE 4E GMD DOM
4-06 2x 365d 34390 4.4 1507 3.4 1174
6-04 2x 365d 34100 4.5 1520 3.4 1144
8-00 2x 365d 32530 4.4 1446 3.4 1095
10-1 2x 365d 30960 4.1 1272 3.5 1073
Life: 2918d 222630 4.4 9862 3.5 7843

Full sister to Silk

Opsal Finley Sage-ET EX-92 EEEEE DOM
3-03 2x 365d 39906 3.8 1512 3.0 1190

3rd Dam

Inwood Stephanie VG-88 EEVV
7-10 2x 365d 27620 4.4 1217 3.4 937
Life: 2360d 138400 4.5 6237 3.5 4310

4th Dam

Inwood Sheila VG-87 VG-MS
6-05 2x 365d 21010 4.3 911

5th Dam

Inwood Sonja Wayne-Twin VG-85 VG-MS
7-02 2x 332d 16580 3.8 636
Life: 3403d 147620 3.9 5737

6th Dam

Inwood Homestead Sara VG-86
6-06 2x 305d 14090 5.3 752
Life: 2745d 117620 4.3 5085

7th Dam

Inwood Homestead Sibyl VG-85
5-04 2x 333d 19440 4.0 778
Life: 3480d 148940 4.0 6025

8th Dam

Inwood Susan Homestead Design VG-88
7-07 2x 305d 14990 3.3 492