

**LYN-LAND DURHAM GLORY EX-91 EEVEE**  
SELLS AS LOT 112



**LYN-LAND ENCORE GEMINI-ET EX-91 EEVEE 2E**  
2ND DAM OF LOT 112 & 3RD DAM OF LOTS 113 & 114

# 112

## 112A FIVE #1 EMBRYOS

Sire: Gen-Mark Stmatic Sanchez-ET

## 112B THREE #1 EMBRYOS

Durham x Lyn-Land Encore Gemini-ET  
Conventional Thaw

### Regancrest Elton Durham-ET

2250783 Excellent-90 GM 8/01 \*TR \*CV \*TL  
PTA +46M -23F +17P 99R 4/09  
PTA +1.3PL 2.88SCS +0.6DPR  
PTA +3.05T +3.08UDC +2.59FLC 99R 4/09  
GTPI +1564M

### Lyn-Land Lee Gem

131410051 Very Good-88 EX-MS  
3-00 2x 365d 34350 4.1 1395 3.4 1172  
4-02 2x 365d 26380 4.0 1032 3.3 861  
2-00 2x 316d 21260 3.6 773 3.5 745

Maternal sister to Gem

### Wilstar Duchess Lyn-ET EX-90

3-04 2x 365d 28740 3.7 1076 3.4 963  
Full sister to Durham embryos selling  
Owned by Robert Gates, Poy Sippi, WI

## LYN-LAND DURHAM GLORY

134166746 Excellent-91 EEVEE \*TR \*TV  
Born: March 31, 2003 • Donor Dam  
4-02 2x 365d 37040 3.7 1365 3.2 1182  
3-02 2x 326d 27160 3.7 1011 3.2 869  
2-02 2x 334d 27080 3.7 999 3.2 864

Bred: April 18, 2009 to Comestar Outside-ET

Sells with three #2 Sanchez embryos

### Emprise Bell Elton

1912270 Excellent-95 \*CV \*BLGTPI +1121G

### Snow-N Denises Dellia

12895802 Excellent-95 2E GMD DOM \*TV \*TL  
6-00 2x 365d 35230 4.0 1425 3.0 1049  
Life: 2558d 180240 3.9 7108 3.2 5723

### Comestar Lee-ET

5757117C EX-CAN GM 8/03 \*TV \*TL  
PTA -145M +31F +5P 99R 4/09  
PTA +1.97T +1.24UDC +1.57FLC GTPI +1375M

### Lyn-Land Encore Gemini-ET

127430276 Excellent-91 EEVEE 2E GMD  
3-04 2x 305d 28600 3.6 1028 3.2 910  
2-04 2x 313d 22470 4.0 900 3.4 775  
5-01 2x 365d 30100 3.7 1121 3.2 965  
Life: 1345d 109860 3.9 4310 3.4 3713

Embryos sell with Glory

**THREE #2 EMBRYOS**

Sire: Gen-Mark Stmatic Sanchez

3rd Dam

### Ray-Barb Broker Daisy-ET VG-85

3-06 3x 365d 22280 4.1 922 3.5 770

4th Dam

### Sheik Hilltop-Hanover Dana-ET EX-92 2E

6-09 2x 365d 29420 3.9 1149 3.6 1060  
Life: 2435d 152100 4.1 6168 3.6 5457

5th Dam

### Dreamstreet Chief Delight-Twin EX-93 2E DOM

4-11 2x 365d 25230 5.1 1288 3.3 821  
Life: 1584d 108810 4.3 4651

6th Dam

### Sher-Mar Ski Boots Dawn EX-93 VEEE 3E GMD

8-03 2x 365d 24730 4.2 1044  
Life: 2333d 167540 3.9 6529

7th Dam

### Sher-Mar Fury Lee Ann EX-90 EVEV 2E

4-02 2x 307d 12920 3.8 495

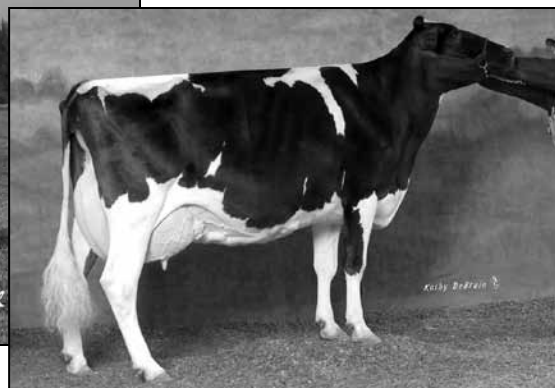
8th Dam

### Larkeith Ivanhoe Lamaga VG-85 VG-MS

3-04 2x 322d 13780 3.5 485



**WILSTAR OUTSIDE GALAXY VG-87 VG-MS**  
SELLS AS LOT 114



**LYN-LAND LEE GEM VG-88 EX-MS**  
DAM OF LOT 112; 2ND DAM OF LOTS 113 & 114

# 113

## WILSTAR OUTSIDE GEMINI

64470343 • Born: June 21, 2007

Bred: Nov. 25, 2008 to Regancrest-HHF Mac-ET

# 114 1/2

## WILSTAR HI METRO GRACIE

66731641 • Born: April 20, 2009

### Comestar Outside-ET

6026421C EX-CAN GM 1/08 \*TV \*TL  
PTA +567M +43F +4P 99R 4/09  
PTA +5.1PL 2.98SCS +1.5DPR  
PTA +2.02T +1.73UDC +2.18FLC 99R 4/09  
GTPI +1650M

### Lyn-Land Durham Glory

134166746 Excellent-91 EEVEE \*TR \*TV  
4-02 2x 365d 37040 3.7 1365 3.2 1182  
3-02 2x 326d 27160 3.7 1011 3.2 869  
2-02 2x 334d 27080 3.7 999 3.2 864  
Sells as Lot 112

# 114

## WILSTAR OUTSIDE GALAXY

63193567 Very Good-87 V G-MS @ 2-04

Born: June 11, 2006

1-11 2x 286d 24730 3.7 909 3.0 752

Fresh: April 20, 2009

• 3rd Jr 2-Yr-Old Cow WI District 7 Show 2008

### Ronnybrook Prelude-ET

392457C GP-81 GM 8/97 \*TL  
PTA -597M +33F -13P 99R 4/09  
PTA -.17T -.47UDC +1.22FLC GTPI +1117M

### Comestar L Or Black-ET

5311227C VG-87-CAN \*16 STAR  
3-11 2x 365d 35745 3.7 1325 3.0 1056  
2-00 2x 365d 22871 3.8 866 3.1 700

### Regancrest Elton Durham-ET

2250783 Excellent-90 GM 8/01 \*TR \*CV \*TL  
PTA +46M -23F +17P 99R 4/09  
PTA +3.05T +3.08UDC +2.59FLC GTPI +1564M

### Lyn-Land Lee Gem

131410051 Very Good-88 EX-MS  
3-00 2x 365d 34350 4.1 1395 3.4 1172  
4-02 2x 365d 26380 4.0 1032 3.3 861  
2-00 2x 316d 21260 3.6 773 3.5 745

### 3rd Dam

#### Lyn-Land Encore Gemini-ET EX-91 2E GMD

3-04 2x 305d 28600 3.6 1028 3.2 910  
Life: 1345d 109860 3.9 4310 3.4 3713

### 4th Dam

#### Ray-Barb Broker Daisy-ET VG-85

3-06 3x 365d 22280 4.1 922 3.5 770

### 5th Dam

#### Sheik Hilltop-Hanover Dana-ET EX-92 2E

6-09 2x 365d 29420 3.9 1149 3.6 1060  
Life: 2435d 152100 4.1 6168 3.6 5457

### 6th Dam

#### Dreamstreet Chief Delight-Twin EX-93 2E DOM

4-11 2x 365d 25230 5.1 1288 3.3 821  
Life: 1584d 108810 4.3 4651

### 7th Dam

#### Sher-Mar Ski Boots Dawn EX-93 VEEE 3E GMD

8-03 2x 365d 24730 4.2 1044  
Life: 2333d 167540 3.9 6529

### 8th Dam

#### Sher-Mar Fury Lee Ann EX-90 EVEE 2E

4-02 2x 307d 12920 3.8 495

### 9th Dam

#### Larkeith Ivanhoe Lamaga VG-85 VG-MS

3-04 2x 322d 13780 3.5 485



**GATEWAY-ACRES DAPHNE-ET EX-90 2E GMD DOM**  
DAM OF LOTS 115, 116, 119 & 120

# 115

## **SEWARDS-FOLLY FORTUNE ET**

66731640

Born: March 12, 2009

### **To-Mar D-Fortune-ET**

129922003 Excellent-91 \*TV \*TL  
PTA -566M +3F +18P 93R 4/09  
PTA +1.3PL 2.82SCS +1.0DPR  
PTA +2.63T +2.48UDC +1.33FLC 82R 4/09  
GTPI +1571G

### **Gateway-Acres Daphne-ET**

121675019 Excellent-90 EEEVV 2E GMD DOM  
2-11 3x 365d 46040 3.7 1721 3.9 1322  
5-00 3x 305d 34650 3.7 1299 2.9 989  
Life: 1541d 147410 3.8 5585 3.0 4410

• Embryos exported • Numerous sons in A!

### **Regancrest Elton Durham-ET**

2250783 Excellent-90 GM 8/01 \*TR \*CV \*TL  
PTA +46M -23F +17P 99R 4/09  
PTA +3.05T +3.08UDC +2.59FLC GTPI +1564M

### **C Plushanski Bstar Flute-ET**

14173141 Excellent-92 EEEVE 2E GMD DOM  
6-00 2x 365d 37430 4.9 1818 3.4 1289  
Life: 1892d 140460 4.7 6588 3.6 5126

### **Startmore Rudolph-ET**

5470579C EX-CAN GM 2/04 \*TV \*TL  
PTA +865M +16F +26P 99R 4/09  
PTA +.88T +.94UDC -.54FLC GTPI +1535M

### **Way-Cin Royal Dunn**

15084363 Excellent-90 EEEEV DOM  
4-07 2x 365d 29070 4.1 1182 3.1 889  
3-04 2x 365d 25830 4.0 1023 3.4 870  
2-02 2x 365d 22150 4.2 923 3.2 709

*4th Dam*

### **Nee-Val Domain Betsy EX-90 EVEE DOM**

6-02 2x 365d 24550 3.6 885 3.3 801

### **Cracin Royal**

2014271 Excellent-91 GM 7/93 \*TL  
PTA -1082M -45F -26P 99R 4/09  
PTA +.27T -.39UDC +.01FLC TPI +678M

### **Way-Cin Leadman Brook-ET**

14289981 Very Good-88 VG-MS DOM  
5-07 2x 365d 28370 4.4 1242 3.3 939  
4-04 2x 365d 26130 4.5 1178 3.2 848  
6-09 2x 365d 21000 4.4 922 3.1 647  
3-03 2x 326d 19870 4.0 796 3.4 684  
Life: 1817d 115420 4.4 5045 3.3 3769