



**WILSTAR FORTUNE ELITE**  
SELLS AS LOT 121



**B-Y-U ELLY OF MAYERLANE-ET VG-88 EX-MS**  
DAM OF LOT 121



**WAUREGAN RUDOLPH ELLYMAE-ET EX-90 EEVVE**  
2ND DAM OF LOT 121

# 121

## WILSTAR FORTUNE ELITE

63193608  
Born: March 4, 2007  
1-11 2x 87d 6792 3.7 250 3.1 209 RIP

Bred: April 20, 2009 to Den-K Marshall LL Laurin

### Regancrest Elton Durham-ET

2250783 Excellent-90 GM 8/01 \*TR \*CV \*TL  
PTA +46M -23F +17P 99R 4/09  
PTA +3.05T +3.08UDC +2.59FLC GTPI +1564M

### C Plushanski Bstar Flute-ET

14173141 Excellent-92 EEVVE 2E GMD DOM  
6-00 2x 365d 37430 4.9 1818 3.4 1289  
Life: 1892d 140460 4.7 6588 3.6 5126

### Comestar Stormatic-ET

6947936C EX-CAN GM 2/07 \*TV \*TL  
PTA +736M +10F +14P 99R 4/09  
PTA +2.57T +1.86UDC +3.22FLC GTPI +1522M

### Wauregan Rudolph Ellymae-ET

6921116 Excellent-90 EEVVE  
4-06 3x 365d 40210 3.6 1455 3.4 1375  
2-07 3x 365d 35570 3.6 1287 3.5 1247

### To-Mar D-Fortune-ET

129922003 Excellent-91 \*TV \*TL  
PTA -566M +3F +18P 93R 4/09  
PTA +1.3PL 2.82SCS +1.0DPR  
PTA +2.63T +2.48UDC +1.33FLC 82R 4/09  
GTPI +1571G

### B-Y-U Elly of Mayerlane-ET

134471978 Very Good-88 EX-MS  
2-04 2x 365d 28390 3.4 978 3.3 933  
3-07 2x 305d 27290 3.1 840 3.4 915

• Several active bulls in AI from this family

#### 3rd Dam

**Whittier-Farms Lead Mae-ET** EX-95 3E GMD  
8-07 3x 357d 41270 4.8 1962 3.5 1440  
Life: 1613d 126960 4.3 5473 3.6 4597

#### 4th Dam

**Raymau Bstar Monica-ET** VG-89 VEVE DOM  
2-01 2x 146d 12280 3.8 471 3.3 405

#### 5th Dam

**Juniper Jason Maria** VG-87 EX-MS DOM  
2-03 2x 365d 20260 4.3 868 3.6 736

#### 6th Dam

**JDM-Pride Valiant Maggie** EX-91 GMD DOM  
6-00 2x 365d 35540 4.1 1441 3.3 1186  
Life: 1666d 119120 4.2 5002 3.6 4281

#### 7th Dam

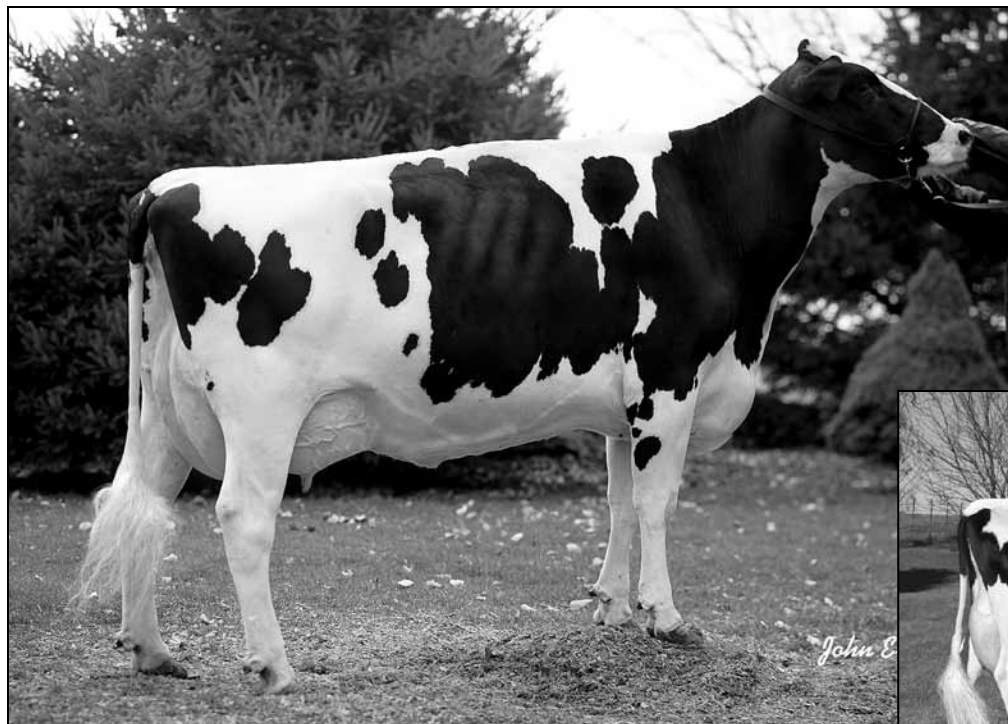
**La-Ko-Land Penstate Sadie** VG-87 GMD DOM  
8-03 2x 336d 24420 3.3 818 3.2 781  
Life: 2480d 166909 3.5 5732 3.2 2854

#### 8th Dam

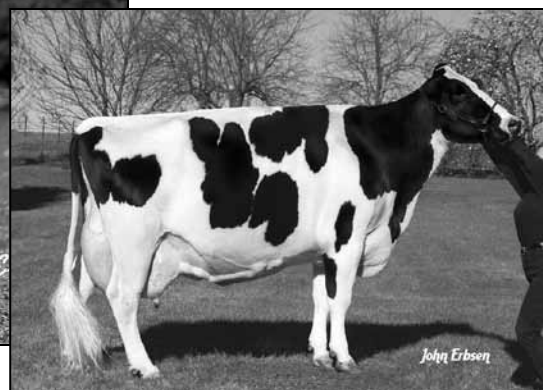
**La-Ko-Land Bootmaker Sally** VG-86  
5-10 2x 365d 24450 4.1 1010  
Life: 1725d 105370 3.9 3994

#### 9th Dam

**La-Ko-Land Monitor Nancy** EX-90  
10-11 3x 320d 19670 3.1 619  
Life: 2381d 145490 3.0 4442



**HARMS-HOME JURORS FURY-ET VG-88 EX-MS**  
DAM OF LOT 122



**HARMS-HOME FANNIES FRANNY EX-91 4E**  
2ND DAM OF LOT 122

# 122

WILSTAR & KE-JO HOLSTEINS

## Regancrest Elton Durham-ET

2250783 Excellent-90 GM 8/01 \*TR \*CV \*TL  
PTA +46M -23F +17P 99R 4/09  
PTA +1.3PL 2.88SCS +0.6DPR  
PTA +3.05T +3.08UDC +2.59FLC 99R 4/09  
GTPI +1564M

## Harms-Home Jurors Fury-ET

132630579 Very Good-88 EX-MS  
4-10 2x 365d 33290 3.1 1032 3.2 1076  
6-02 2x 365d 30770 2.7 817 3.1 966  
2-10 2x 348d 21550 3.1 658 3.5 751  
3-10 2x 351d 21490 3.2 682 3.7 787  
Life: 1591d 115550 3.0 3465 3.3 3868

Maternal sisters to Fury

## Harms-Home Frannys Foxy EX-94

• Member All-American Produce of Dam 1995

## Harms-Home Frannys Finesse EX-94

• Member All-American Produce of Dam 1995

## KAMPS-HOLLOW FEATURE-ET

136892425 Very Good-87 VVVVE @ 3-00  
Born: October 6, 2005  
2-06 2x 343d 27592 3.5 961 3.0 839

Fresh: April 27, 2009

## Emprise Bell Elton

1912270 Excellent-95 \*CV \*BL  
PTA +262M +12F +17P 99R 4/09  
PTA -.18T -.37UDC +1.75FLC GTPI +1121G

## Snow-N Denises Dellia

12895802 Excellent-95 2E GMD DOM \*TV \*TL  
6-00 2x 365d 35230 4.0 1425 3.0 1049  
Life: 2558d 180240 3.9 7108 3.2 5723

## Ked Juror-ET

2124357 Good Plus-82 GM 2/01 \*TV \*TL  
PTA +139M +1F +2P 99R 4/09  
PTA +1.49T +1.45UDC -.52FLC GTPI +1227M

## Harms-Home Fannies Franny

12982885 Excellent-91 EEEEEV 4E  
8-11 2x 305d 20310 3.3 664 3.4 690  
4-04 2x 305d 18680 3.4 634 3.5 646  
6-06 2x 288d 17650 3.3 579 3.2 568  
5-04 2x 305d 17080 3.2 555 3.4 585  
Life: 2703d 136920 3.2 4447 3.4 4653

• All-American Produce of Dam 1995

## 122 1/2

### WILSTAR ASPEN FABULOUS

66731642 • Born: April 27, 2009

Sire: EK-Oseeana Aspen-ET

4th Dam

## Harms-Home Elevation Admiral VG-87 EX-MS

7-08 2x 304d 20720 3.8 785  
Life: 2702d 156000 3.8 5996

5th Dam

## Roylene Admiss Barbell VG-87

6th Dam

## Roylene Skyliner M P Bea VG-87 VVVE

6-00 2x 305d 19760 4.1 806

## Mel-Est Valiant Iros Melvin

1818972 Excellent-93 GM \*TL  
PTA -749M -33F -20P 99R 4/09  
PTA -.48T -.66UDC -.69FLC TPI +675G

## Harms-Home Fannie Annie

10739853 Good Plus-83 @ 6-09  
5-03 2x 283d 15460 3.3 511 3.2 490  
4-03 2x 305d 14520 3.4 491 3.3 476  
Life: 2217d 103630 3.3 3444 3.2 2895



**CAR-BON ADAN ABIGAIL-ET EX-92 2E DOM**  
DAM OF LOT 123



**CAR-BON PETE ABBY EX-93 4E DOM**  
3RD DAM OF LOT 123

# 123

## CAR-BON BEST ALOHA

137414697 Good Plus-83 @ 2-06  
Born: April 19, 2006  
2-01 2x 307d 21185 4.4 939 3.3 694

Due: May 14, 2009

### Hidden-View Best

123645630 Excellent-94 \*TV \*TL  
PTA +472M +51F +33P 99R 4/09  
PTA -0.7PL 3.40SCS -2.1DPR  
PTA +1.92T +1.82UDC +2.56FLC 99R 4/09  
GTPI +1498M

### Car-Bon E Durham Anna

135379345 Good Plus-84 @ 4-09  
3-01 2x 365d 24830 3.4 850 3.3 831  
2-00 2x 365d 19150 3.6 683 3.3 637

*Maternal sisters to Anna*

**Car-Bon Encore Abbysue EX-91 EEEEE**  
5-03 2x 351d 23790 3.4 797 3.2 752

**Car-Bon Marshall Autumn EX-90 EEEVE 2E**  
3-03 2x 365d 29510 3.6 1069 3.1 923

### Parker Aero Wade-ET

2182318 Good-79 GM 11/00 \*TV \*TL  
PTA +62M -5F +10P 99R 4/09  
PTA +1.25T +2.10UDC +1.51FLC TPI +1353M

### Hidden-View Beloved-ET

123645630 Very Good-87 VG-MS  
3-04 2x 365d 37450 3.5 1314 3.1 1164  
2-02 2x 365d 34129 3.4 1155 3.0 1019

### Regancrest Elton Durham-ET

2250783 Excellent-90 GM 8/01 \*TR \*CV \*TL  
PTA +46M -23F +17P 99R 4/09  
PTA +3.05T +3.08UDC +2.59FLC GTPI +1564M

### Car-Bon Adan Abigail-ET

15735533 Excellent-92 EEEVE  
9-02 2x 365d 28220 3.5 996 2.7 769  
7-05 2x 365d 27940 3.6 1016 2.8 780  
6-02 2x 365d 26370 3.6 949 3.0 786  
3-11 2x 335d 23220 3.8 875 2.9 678  
10-7 2x 304d 21990 3.6 792 2.7 586  
Life: 2865d 183580 3.6 6676 2.9 5246

### 4th Dam

#### Car-Bon Conductor Angie VG-85

7-05 2x 325d 28240 3.1 884 3.1 881  
Life: 2080d 139190 3.1 4328

### 5th Dam

#### Car-Bon Astro Amy VG-88 EX-MS

6-11 2x 365d 17820 4.1 723 3.1 558  
Life: 2960d 138120 3.7 5071

### Stardell Chief Adan-ET

2016744 Very Good-86 GM \*TV \*TL  
PTA -555M +19F -27P 99R 4/09  
PTA +.81T +2.36UDC -1.45FLC GTPI +1235M

### Car-Bon Pete Abby

10856881 Excellent-93 EEEEE 4E DOM  
5-04 2x 365d 28220 3.1 881 3.1 878  
6-08 2x 365d 25880 3.4 891 3.2 824  
Life: 3158d 183190 3.6 6516 3.0 5475

• HM Jr All-American 5-Yr-Old Cow 1986