

# 124

## CAR-BON BRASS SHERRY

134520122 Excellent-92 EEEEE  
 Born: September 23, 2003  
 3-11 2x 365d 34580 3.9 1336 3.4 1160  
 3-00 2x 300d 24020 4.0 950 3.3 792  
 2-01 2x 298d 21730 3.8 828 3.2 704  
 5-00 2x 203d 20470 4.1 832 3.1 626 RIP

Bred: Feb. 22, 2009 to Windy-Knoll-View Pronto-ET

### MJR Blackstar Emory-ET

2114601 Excellent-97 GM 2/00 \*TV GTPI +1206M

### Halo Leadman Bonnet

14629955 Very Good-88 VG-MS GMD DOM  
 3-00 2x 365d 33050 3.4 1111 3.2 1071  
 Life: 2013d 151660 3.4 5108 3.2 4802

### Regancrest Elton Durham-ET

2250783 Excellent-90 GM 8/01 \*TR \*CV \*TL

PTA +46M -23F +17P 99R 4/09  
 PTA +3.05T +3.08UDC +2.59FLC GTPI +1564M

### Car-Bon Integrity Boots

128060827

### Halo Emory Brass

17065449 Very Good-87 \*TV \*TL  
 PTA +422M -5F +4P 99R 4/09  
 PTA +1.4PL 2.80SCS -1.2DPR  
 PTA +1.81T +1.77UDC +.24FLC 99R 4/09  
 GTPI +1325M

### Car-Bon Durham Sparkle

131693209

#### 4th Dam

**Car-Bon Mark Angela-ET** EX-91 VEVEE 2E  
 5-03 2x 365d 21790 3.6 788 3.2 690

#### 5th Dam

**Car-Bon Pete Abby** EX-93 4E DOM  
 5-04 2x 365d 28220 3.1 881 3.1 878  
 Life: 3158d 183190 3.6 6516 3.0 5475

#### 6th Dam

**Car-Bon Conductor Angie** VG-85  
 7-05 2x 325d 28240 3.1 884 3.1 881  
 Life: 2080d 139190 3.1 4328

#### 7th Dam

**Car-Bon Astro Amy** VG-88 EX-MS  
 6-11 2x 365d 17820 4.1 723 3.1 558  
 Life: 2960d 138120 3.7 5071

### Robthom Integrity-ET

2150948 Excellent-96 GM 2/99 \*TV \*TL  
 PTA +381M +4F -4P 99R 4/09  
 PTA +1.60T +1.44UDC +.12FLC GTPI +1067M

### Car-Bon Astre Amanda

17090052 Very Good-88 EVEVV  
 5-07 2x 335d 20110 3.0 596 3.2 649  
 4-07 2x 304d 18500 3.1 581 3.1 582  
 3-00 2x 365d 17970 3.6 645 3.2 583

# 125

## CAR-BON ZENITH MISTY

138105857  
 Born: December 16, 2006  
 2-00 2x 119d 7353 4.1 298 3.0 224 RIP

Carries embryo implanted March 20, 2009  
 Braedale Goldwyn x Farmdale Canyon Dazzle EX-94

### Regancrest Elton Durham-ET

2250783 Excellent-90 GM 8/01 \*TR \*CV \*TL  
 PTA +46M -23F +17P 99R 4/09  
 PTA +3.05T +3.08UDC +2.59FLC GTPI +1564M

### Ocean-View Mandel Zandra

15982323 Excellent-95 EEEEE 2E GMD DOM  
 3-09 2x 365d 37710 4.2 1597 3.3 1253  
 • Int Champion Western Fall National 1998

### Four-Of-A-Kind Eland-ET

17002605 Excellent-94 \*TV \*TL  
 PTA -140M +28F -20P 99R 4/09  
 PTA +1.47T +.67UDC +1.73FLC GTPI +1246M

### Car-Bon Mark Marcy

15327720 Excellent-90 VEVEE 2E  
 10-1 2x 365d 28140 3.6 1018  
 8-09 2x 365d 28300 3.5 995 3.2 895  
 7-09 2x 301d 23820 3.6 851 3.2 762  
 6-08 2x 331d 23240 3.7 853 3.2 742  
 Life: 3501d 223200 3.6 8137

### Ocean-View Zenith-TW-ET

12800008 GM 8/08 \*TV \*TL  
 PTA +232M +29F +18P 99R 4/09  
 PTA +2.5PL 2.60SCS +1.5DPR  
 PTA +2.16T +2.36UDC +.14FLC 99R 4/09  
 GTPI +1669M

### Car-Bon Eland Martha

132039444 Very Good-88 EX-MS  
 5-02 2x 365d 25330 4.0 1004 3.0 758  
 4-01 2x 325d 24570 3.8 944 3.0 732  
 6-06 2x 305d 21860 4.0 864 3.1 675  
 3-01 2x 316d 20000 4.1 813 2.9 582  
 1-11 2x 344d 19810 3.9 772 2.9 578  
 Life: 1731d 115130 3.9 4542 3.0 3445

#### 4th Dam

**Car-Bon Gambler Audrey** EX-92 3E DOM  
 4-05 2x 315d 25260 3.7 943 2.7 691  
 Life: 2438d 151290 3.8 5807 2.8 4226

#### 5th Dam

**Car-Bon Pete Abby** EX-93 EEEEE 4E DOM  
 5-04 2x 365d 28220 3.1 881 3.1 878  
 Life: 3158d 183190 3.6 6516 3.0 5475  
 • HM Jr All-American 5-Yr-Old Cow 1986

#### 6th Dam

**Car-Bon Conductor Angie** VG-85  
 7-05 2x 325d 28240 3.1 884 3.1 881  
 Life: 2080d 139190 3.1 4328

#### 7th Dam

**Car-Bon Astro Amy** VG-88 EX-MS  
 6-11 2x 365d 17820 4.1 723 3.1 558  
 Life: 2960d 138120 3.7 5071

### Walkway Chief Mark

1773417 Very Good-87 GM 7/96 \*TL \*TD  
 PTA -228M +6F -13P 99R 4/09  
 PTA +.37T +.54UDC -2.39FLC GTPI +950G

### Car-Bon Gene Annie

14674879 Very Good-85 VG-MS  
 5-02 2x 356d 21730 3.8 833 3.2 704  
 3-00 2x 365d 19800 3.9 773 3.2 640  
 6-05 2x 323d 18470 4.1 763 3.3 611  
 4-02 2x 294d 15700 4.2 653 3.5 546



**EBE-TIDE ROXMONEY ALTA-ET EX-93 EEEVE 3E GMD**  
DAM OF LOT 126



**EBE-TIDE ROXMARY ALTA EX-95 EEEVE 4E GMD**  
2ND DAM OF LOT 126

# 126

WILSTAR & EVAN SCHNADT

## Comestar Stormatic-ET

6947936C EX-CAN GM 2/07 \*TV \*TL  
PTA +736M +10F +14P 99R 4/09  
PTA +1.7PL 3.07SCS -0.6DPR  
PTA +2.57T +1.86UDC +3.22FLC 99R 4/09  
GTPI +1522M

## Ebe-Tide Roxmoney Alta-ET

15657569 Excellent-93 EEEVE 3E GMD  
7-03 3x 365d 43682 3.4 1476 3.0 1324  
6-03 3x 321d 37780 3.5 1322 3.1 1162  
4-11 3x 365d 35470 3.1 1093 3.0 1074  
8-10 3x 321d 32970 3.8 1252 3.0 987  
3-06 3x 365d 27400 3.5 947 3.5 967  
2-06 3x 335d 27860 3.5 974 3.2 886  
9-10 2x 365d 27610 3.1 867 3.2 877  
Life: 2646d 242420 3.4 8245 3.1 7611

## GATEWAY-ACRES ROXANNE-ET

62703798 Good Plus-81 @ 2-03  
Born: April 9, 2006 • Donor Dam  
1-10 2x 295d 18430 4.2 779 3.4 626  
3-00 2x 17d 1239 5.5 68 2.7 34 RIP

Fresh: April 15, 2009

## Maughlin Storm-ET

5457798 EX-CAN GM 8/04 \*B/R \*TV \*TL  
PTA +192M +36F +6P 99R 4/09  
PTA +1.91T +1.60UDC +2.04FLC GTPI +1424M

## Comestar Lausann Black-ET

5319830C VG-87-CAN \*23 Star  
5-04 2x 365d 37039 4.3 1587 3.6 1318  
Life: 1818d 108246 4.4 4735 3.8 4151

## Conant-Acres-JY Broker-ET

389459C EX-CAN EXTRA'90 \*TV \*TL  
PTA -1106M +3F -21P 99R 4/09  
PTA +.92T +.52UDC -.54FLC GTPI +1118G

## Ebe-Tide Roxmary Alta

11670657 Excellent-95 EEEVE 4E GMD  
9-02 3x 365d 36770 3.3 1207 2.9 1062  
11-3 3x 365d 36090 3.2 1140 2.9 1031  
5-03 2x 346d 29950 3.7 1106 3.1 914  
Life: 3142d 245020 3.4 8393 3.0 7307  
• HM All-Pennsylvania 5 Yr Old Cow 1989  
• 2nd 5 Yr Old Pennsylvania Spring Show 1989

## 126A TWO #1 EMBRYOS

Sire: Regancrest Elton Durham-ET

4th Dam

**Rosalind Ebe-Tide Alta** EX-91 GMD  
5-09 2x 365d 29457 3.6 1074

5th Dam

**C Roselandvale Senator Alta** EX-95 2E  
5-00 2x 303d 22170 3.6 796

- HM All-Canadian 2 Yr Old 1974
- Nom All-American 2 Yr Old 1974
- 3rd Aged Cow Eastern National 1977

6th Dam

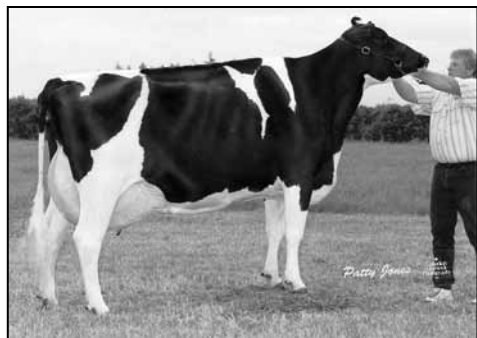
**Roselandvale Princess Alta** VG-86  
11-06 2x 337d 21918 3.7 805

## Leadfield Columbus-ET

1724657 Very Good-88 \*BL  
PTA -1082M -32F -53P 99R 4/09  
PTA -1.95T -.69UDC -2.80FLC TPI +660

## Ebe-Tide Rosalin Alta

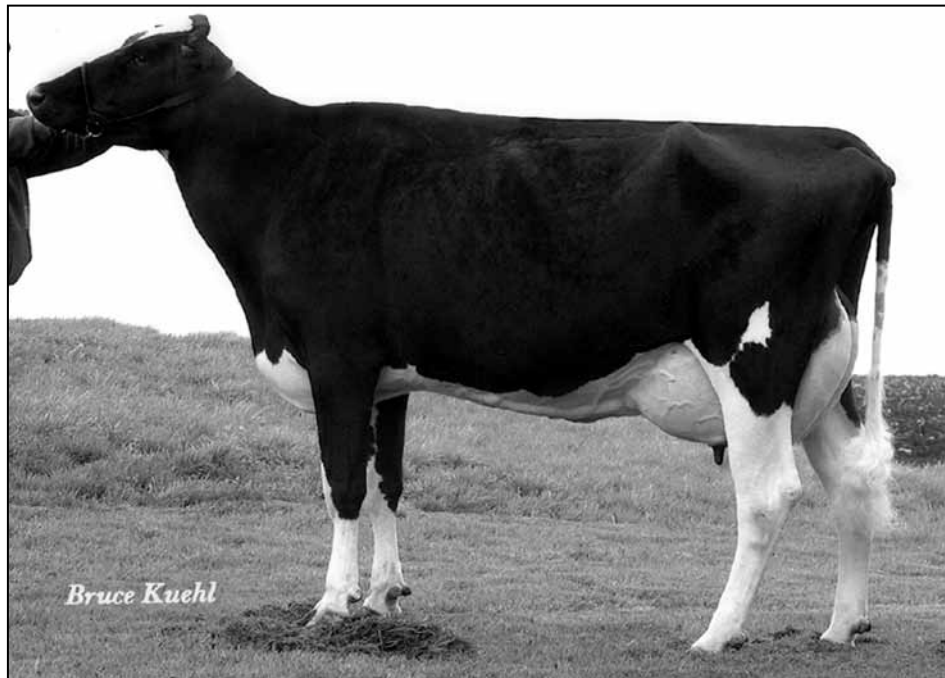
10501327 Very Good-88 VEEV @ 4-09  
3-05 2x 305d 21810 4.0 864  
4-05 2x 237d 16840 3.8 639  
2-02 2x 305d 11830 3.8 455



**MARKWELL LUKE RAPTURE EX-92 EEEEE 3E GMD DOM**  
3RD DAM OF LOT 127



**MARKWELL BSTAR E RAVEN-ET EX-95 3E GMD DOM**  
4TH DAM OF LOT 127



**MARKWELL RUDOLPH DEBRA-ET EX-92 EEEVE DOM**  
2ND DAM OF LOT 127

# 127

## WILSTAR MICH DARBEY

64470376

Born: February 9, 2008

Bred: April 24, 2009 to Den-K Marshall LL Laurin

### Michael Storm Avalanche

122596522 Excellent-93 GM 8/06 \*TV \*TL

PTA +137M +60F +2P 99R 4/09

PTA -0.9PL 2.71SCS -2.3DPR

PTA +2.87T +3.13UDC +2.65FLC 99R 4/09

GTPI +1526G

### A-L-H Dundee Dream-ET

137071636 Good Plus-81 VG-MS @ 2-05

2-01 2x 201d 12480 4.2 528 3.6 449

### Maughlin Storm-ET

5457798 EX-CAN GM 8/04 \*B/R \*TV \*TL

PTA +192M +36F +6P 99R 4/09

PTA +1.91T +1.60UDC +2.04FLC TPI +1424M

### Michael Mandel Antique

15892789 Very Good-88 VG-MS GMD DOM

2-00 2x 359d 31830 3.7 1175 3.1 981

4-09 2x 305d 29370 4.0 1161

### Regancrest Dundee-ET

127640114 Excellent-95 \*TV \*TL

PTA -52M -11F +3P 99R 4/09

PTA +3.04T +3.00UDC +1.56FLC GTPI +1359M

### Markwell Rudolph Debra-ET

126524372 Excellent-92 EEEVE DOM

4-04 3x 365d 38200 4.0 1513 3.4 1287"

2-04 3x 305d 24070 4.1 983 3.3 787

9-00 3x 277d 21490 4.0 854 3.1 670

### 4th Dam

**Markwell Bstar E Raven-ET EX-95 3E GMD DOM**

4-09 2x 365d 37610 4.3 1580 3.4 1255

Life: 2387d 160020 4.1 6623 3.6 5763

### 5th Dam

**Markwell Mark Elite EX-92 4E GMD DOM**

7-00 2x 365d 36230 3.9 1426 3.2 1165

Life: 3736d 211430 3.8 8108 3.6 7533

### 6th Dam

**Rockalli Mars Emily EX-94 EEEEE 4E GMD DOM**

3-10 2x 365d 28270 3.7 1050 3.5 988

Life: 3113d 182970 3.8 7016 3.5 6330

### Startmore Rudolph-ET

5470579C EX-CAN GM 2/04 \*TV \*TL

PTA +865M +16F +26P 99R 4/09

PTA +.88T +.94UDC -.54FLC GTPI +1535M

### Markwell Luke Rapture-ET

15607283 Excellent-92 EEEEE 3E GMD DOM

5-06 2x 365d 39400 4.2 1649 3.3 1304

2-02 2x 365d 30340 3.5 1047 3.4 1028

Life: 1859d 137480 3.9 5347 3.6 4964