



STURATVALE BLACK DANCER EX-92 EEEVE 3E
2ND DAM OF LOT 135

135

KHW Kite Advent-Red-ET

133002953 Excellent-94 *TV *TL *TD
PTA -851M -5F -17P 99R 4/09
PTA +1.9PL 3.04SCS +2.3DPR
PTA +3.39T +3.15UDC +2.21FLC 99R 4/09
GTPI +1477M

Sipka Talent Delilah-ET

60528284 *RC
2-01 2x 365d 18250 4.1 742 3.5 635
Maternal sister to Delilah

Sipka Durham Desirae-ET VG-88 EVVVV

2-06 3x 365d 26530 3.7 987 3.2 849

SIPKA ADVENT DEBORAH

137880223 *RC
Born: April 25, 2007
1-11 2x 26d 1079 4.4 47 3.0 32 RIP

Fresh: April 7, 2009

Markwell Kite-ET

128460878 EX-CAN *RC *TV *TL
PTA -858M -12F -26P 99R 4/09
PTA +2.94T +2.02UDC +.34FLC GTPI +948M

Kamps-Hollow Altitude-ET

129136431 Excellent-95 EEEEE 2E DOM *RC *CV
7-00 2x 365d 39690 4.7 1849 3.5 1385
Life: 1844d 144460 4.4 6295 3.7 5288

Ladino Park Talent-Imp-ET

AUS 930377 Excellent-90 ST'03 *RC *TV *TL
PTA +209M -14F +18P 99R 4/09
PTA +2.90T +3.23UDC +1.62FLC GTPI +1518M

Stuartvale Black Dancer

124561111 Excellent-92 EEEVE 3E
5-01 2x 365d 34730 4.4 1530 3.1 1083
6-05 2x 365d 26270 4.3 1129 3.1 814
8-07 2x 365d 24290 4.6 1111 3.4 823
2-11 3x 365d 22930 4.1 931 3.3 751
Life: 2071d 136560 4.4 6016 3.4 4582

4th Dam

C Shuries Jetstar Donna EX-90 EEVE 2E
8-07 2x 305d 19740 3.5 698 3.1 607

5th Dam

Shuries Dorothy Sheik EX-95 EEEE 3E
5-08 2x 365d 25800 4.2 1075 3.5 915
Life: 1281d 105940 4.0 4231 3.5 3677

• *Res Grand Champion Peterborough 1985*

6th Dam

Schuurson Bonnie Maple VG-85 VG-MS-CAN

Hanoverhill Black Jack-ET

390403C EX-CAN ST'91 *TL
PTA -799M -2F -22P 99R 4/09
PTA +1.09T +.86UDC +.29FLC TPI +1121M

Toddsdale Midnight Donna

15748213 Excellent-92 EVEEE 2E
6-09 2x 311d 24480 4.5 1112 3.3 818
5-10 2x 314d 22660 3.6 810 3.2 723
4-07 2x 339d 20540 3.9 802 3.2 656
Life: 1713d 111178 4.0 4410 3.2 3565



ROTESOWN PONTIAC GRACE-ET
SELLS AS LOT 136



WILSTAR-RS FINLEY GOLDEN-ET VG-88 VEEV
DAM OF LOT 136



WILSTAR-RS BW MRSHAL GAMBLE VG-86 DOM
2ND DAM OF LOT 136

136

ROTESOWN PONTIAC GRACE-ET

138779023
Born: August 6, 2007
P9 PTPI +1781

Carries embryo implanted November 27, 2008
Sanchez x Wilstar-RS Mark Kandy EX-95 3E (Lot 50)

Regancrest Elton Durham-ET

2250783 Excellent-90 GM 8/01 *TR *CV *TL
PTA +46M -23F +17P 99R 4/09
PTA +3.05T +3.08UDC +2.59FLC GTPI +1564M

Klumbs Emory Pontiac

17174342 Excellent-93 EEEEE 3E GMD DOM *TV
7-06 2x 365d 41120 4.9 2032 3.4 1394"
Life: 2351d 237480 4.5 10783 3.4 8109

Opsal Finley-ET

120780521 GM 1/08 *TV *TL
PTA +1069M +12F +30P 99R 4/09
PTA +2.38T +2.16UDC +.41FLC GTPI +1566M

Wilstar-RS BW Mrshal Gamble

132172855 Very Good-86 VG-MS DOM
CTPI +1760
2-00 2x 365d 29020 4.0 1154 3.1 912
4-07 2x 365d 28210 3.5 983 3.1 881
3-05 2x 359d 27900 3.8 1061 3.0 831

Klumbs Durham Pontiac

131348369 Excellent-92 *TV *TL *TR
PTA +628M -4F +8P 96R 4/09
PTA +2.4PL 2.64SCS +0.4DPR
PTA +2.79T +3.58UDC +3.03FLC 90R 4/09
GTPI +1649G

Wilstar-RS Finley Golden-ET

61655681 Very Good-88 VEEV @ 4-0
CTPI +1914 +2449M +67F +63P 4/09
2-00 2x 365d 38290 3.2 1214 3.1 1190
4-03 2x 365d 37790 3.3 1260 3.1 1168

3rd Dam

Wilstar-RS Mtoto Glamour-ET EX-90 EEVVE
3-00 2x 365d 31400 3.3 1031 3.3 1027

4th Dam

Mikary Mandel Gracious-ET VG-86 GMD DOM
2-02 2x 365d 31640 3.4 1084 3.4 1071

5th Dam

Prairie-Belle Glory-ET VG-88 VG-MS GMD DOM
2-01 2x 365d 31860 4.0 1277 3.2 1009

6th Dam

Hayseed Rotate Gaiety EX-90 EEEV GMD DOM
5-11 2x 365d 37420 4.6 1739 3.7 1367
Life: 1575d 120440 4.2 5046 3.4 4150

7th Dam

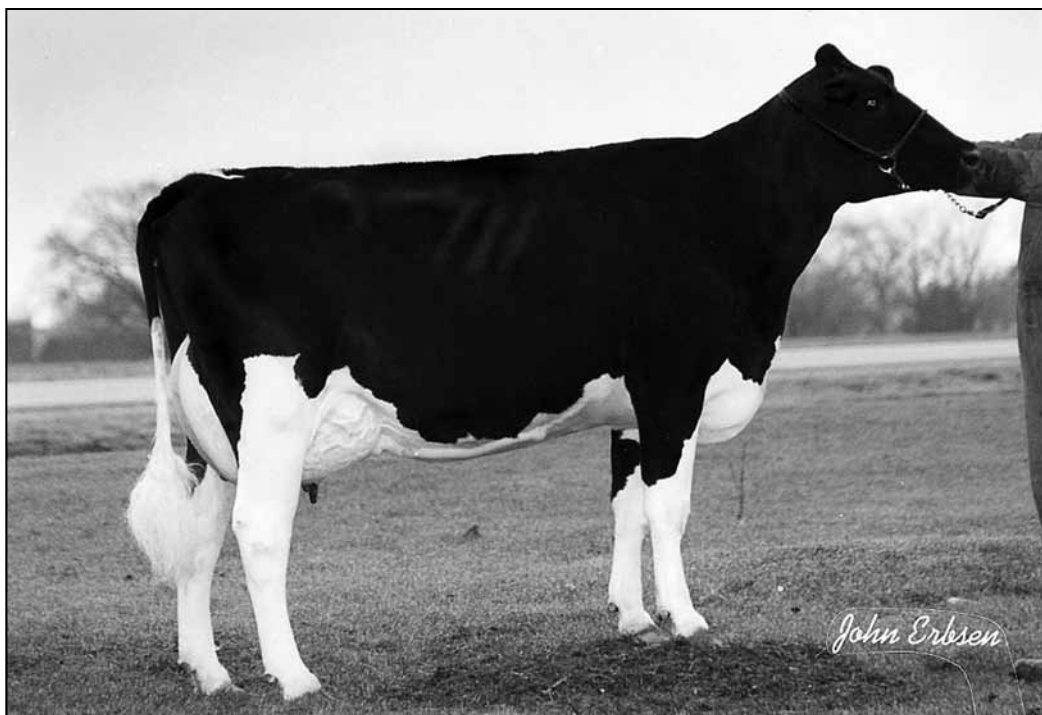
Hayseed Mars Gretchen-Twin EX-94 2E GMD DOM
7-07 2x 365d 37430 3.9 1476 3.6 1333
Life: 2157d 155300 3.7 5678 3.2 4993

8th Dam

Hayseed Cinnamon Astro Grace EX-GMD
7-09 2x 364d 26410 3.4 908 3.1 816
Life: 1533d 101350 3.3 3294 3.3 3302

9th Dam

Hayseed-Acres Astro Ginger EX-90 4E
5-08 2x 305d 17291 3.4 580 3.2 549
Life: 8 Lact 122850 3.4 4226 3.1 2943



HARDWOOD-C MARK MANDY EX-94 EEEEE 3E GMD
3RD DAM OF LOT 137

137

GAJOLY JAMES MILLIE

64395209

Born: July 18, 2007

Carries embryo implanted October 4, 2008
Comestar Stormatic x Wilstar-RS Mark Kandy EX-95

Shoremar James

5902195C GP-81-CAN GM 2/04 *TV *TL
PTA -154M +24F +19P 99R 4/09
PTA -2.9PL 2.86SCS -2.4DPR
PTA +1.60T +1.64UDC +.82FLC 99R 4/09
GTPI +1292M

Hardwood Marshall Micki

135102891 Very Good-85 VG-MS @ 4-06

Mark CJ Gilbrook Grand-ET

393207C VG-86-CAN GM 8/99 *TM *TL
PTA -192M +21F +2P 99R 4/09
PTA +1.28T +1.43UDC -1.03FLC GTPI +1007M

Stelbro Jenine Aerostar

5337384C VG-85 VG-MS-CAN
3-11 2x 365d 31574 3.0 946 3.2 1008
2-03 2x 365d 28755 3.2 924 3.2 926

Mara-Thon BW Marshall-ET

2290977 Very Good-86 GM 8/07 *TV *TL
PTA +1654M +34F +38P 99R 4/09
PTA +2.27T +2.16UDC +2.87FLC GTPI +1570M

Hardwood Storm Misty-ET

132370431 Good Plus-83 VG-MS @ 3-06
3-01 2x 305d 28130 4.2 1184 3.0 854
2-01 2x 306d 21950 3.8 843 3.2 700

4th Dam

Hardwood Chairman Monica VG-85
5-05 2x 365d 24640 3.5 859 3.2 788

5th Dam

Hardwood Sexation Marcie EX-90 EEEV 3E
7-02 2x 365d 32110 3.8 1216 3.3 1056
Life: 1862d 126885 3.8 4846 3.5 4413

Maughlin Storm-ET

5457798 EX-CAN GM 8/04 *B/R *TV *TL
PTA +192M +36F +6P 99R 4/09
PTA +1.91T +1.60UDC +2.04FLC GTPI +1424M

Hardwood-C Mark Mandy

14207990 Excellent-94 EEEEE 3E GMD
9-09 2x 365d 33840 4.1 1378 3.1 1038
8-07 2x 365d 33740 4.0 1337 3.1 1042
5-08 2x 358d 30630 4.0 1214 3.0 918
Life: 2652d 212590 4.0 8429 3.1 6631