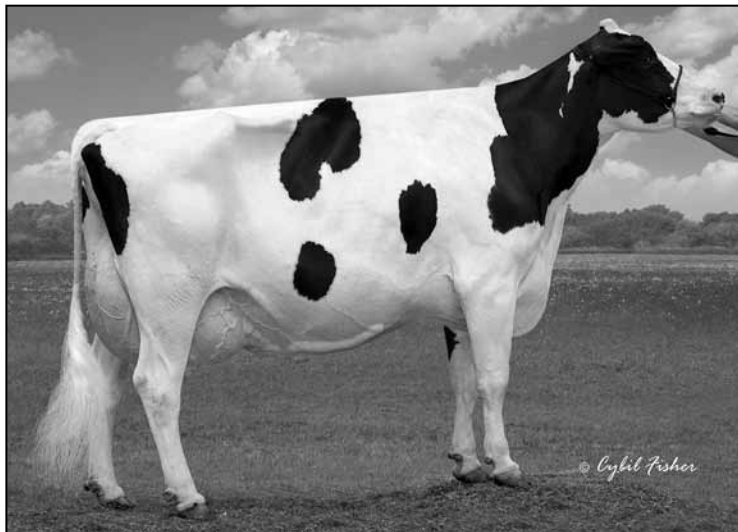


**MD-MAPLE-DELL ROY IMAGE EX-95 EEEEE
DAM OF LOT 138**



**MD-MAPLE-DELL ENCORE INA-ET EX-95 EEEEE 2E
2ND DAM OF LOT 138**



**GOLDFAWN GOLDWYN INA
SELLS AS LOT 139**



GOLDFAWN EMORY IMAGE EX-91 EEVVE
SELLS AS LOT 138

138

ABBI LEA GOLDENBERG

GOLDFAWN EMORY IMAGE

136818377 Excellent-91 EEVVE @ 3-04

Born: June 2, 2005

3-00 2x 311d 33376 4.0 1328 2.8 945 RIP

2-00 2x 308d 23430 3.2 761 3.1 738

Bred: May 6, 2009 to Jenny-Lou Mrshl Toystory-ET

MJR Blackstar Emory-ET

2114601 Excellent-97 GM 2/00 *TV *TL

PTA +507M -15F -1P 99R 4/09

PTA +0.2PL 2.97SCS -1.6DPR

PTA +1.67T +1.40UDC +1.68FLC 99R 4/09

GTPI +1206M

MD-Maple-Dell Roy Image

134481733 Excellent-95 EEEEE

3-01 2x 365d 33200 3.3 1081 3.0 989

2-01 2x 320d 23390 3.6 838 3.2 744

- 5th 5-Yr-Old Cow International Show 2008
- Res All-American Jr 3-Year-Old 2006
- Res Int Champion International Show 2006
- HM All-American Jr 2-Yr-Old Cow 2005
- Res All-Wisconsin Jr 2-Yr-Old Cow 2005

3rd Dam

MD-Maple-Dell VG Image VG-87 VG-MS DOM

7-11 2x 304d 27460 4.8 1306 3.1 852

Life: 2284d 149330 4.8 7168 3.3 4954

Roylane Jordan-ET

17064727 Excellent-95 GM 2/04 *TV *TL

PTA +49M +7F -1P 99R 4/09

PTA +2.95T +2.83UDC +.86FLC 99R GTPI +1380M

MD-Maple-Dell Encore Ina-ET

130985628 Excellent-95 EEEEE 2E

4-09 2x 365d 32270 4.5 1463 3.4 1092

3-02 2x 356d 25650 4.2 1069 3.4 874

2-02 2x 303d 20310 4.0 808 3.3 680

Life: 1531d 112490 4.4 4939 3.4 3825

139

ABBI LEA GOLDENBERG

GOLDFAWN GOLDWYN INA

64470405

Born: June 25 2008

P9 PTPI +1762

Braedale Goldwyn

10705608 GP-CAN EXTRA'05 GM 8/08 *TV *TL

PTA +837M +74F +42P 99R 4/09

PTA +3.6PL 2.71SCS -2.3DPR

PTA +3.82T +3.51UDC +3.20FLC 99R 4/09

GTPI +2052M

Goldfawn Emory Image

136818377 Excellent-91 EEVVE @ 3-04

3-00 2x 311d 33376 4.0 1328 2.8 945 RIP

2-00 2x 308d 23430 3.2 761 3.1 738

Sells as Lot 138

3rd Dam

MD-Maple-Dell Encore Ina-ET EX-95 2E

4-09 2x 365d 32270 4.5 1463 3.4 1092

Life: 1531d 112490 4.4 4939 3.4 3825

4th Dam

MD-Maple-Dell VG Image VG-87 VG-MS DOM

7-11 2x 304d 27460 4.8 1306 3.1 852

Life: 2284d 149330 4.8 7168 3.3 4954

MJR Blackstar Emory-ET

2114601 Excellent-97 GM 2/00 *TV *TL

PTA +507M -15F -1P 99R 4/09

PTA +1.67T +1.40UDC +1.68FLC GTPI +1206M

MD-Maple-Dell Roy Image

134481733 Excellent-95 EEEEE

3-01 2x 365d 33200 3.3 1081 3.0 989

2-01 2x 320d 23390 3.6 838 3.2 744

- Res All-American Jr 3-Year-Old 2006
- HM All-American Jr 2-Yr-Old Cow 2005



140

WILSTAR & NATHAN GOLDENBERG

MS WILSTAR DRHAM IMAGINE-ET

64470426

Born: January 1, 2009

Embryos sell with Imagine

TWO #2 EMBRYOS

Durham x MD-Maple-Dell Roy Ingrid-ET

Regancrest Elton Durham-ET

2250783 Excellent-90 GM 8/01 *TR *CV *TL

PTA +46M -23F +17P 99R 4/09

PTA +1.3PL 2.88SCS +0.6DPR

PTA +3.05T +3.08UDC +2.59FLC 99R 4/09

GTPI +1564M

MD-Maple-Dell Roy Ingrid-ET

62208969

Lost due to calving complications

Full sister to Ingrid

MD-Maple-Dell Roy Image EX-95 EEEEE

3-01 2x 365d 33200 3.3 1081 3.0 989

• Res All-American Jr 3-Year-Old 2006

3rd Dam

MD-Maple-Dell VG Image VG-87 VG-MS DOM

7-11 2x 304d 27460 4.8 1306 3.1 852

Life: 2284d 149330 4.8 7168 3.3 4954

Roylane Jordan-ET

17064727 Excellent-95 GM 2/04 *TV *TL

PTA +49M +7F -1P 99R 4/09

PTA +2.95T +2.83UDC +.86FLC 99R GTPI +1380M

MD-Maple-Dell Encore Ina-ET

130985628 Excellent-95 EEEEE 2E

4-09 2x 365d 32270 4.5 1463 3.4 1092

3-02 2x 356d 25650 4.2 1069 3.4 874

2-02 2x 303d 20310 4.0 808 3.3 680

Life: 1531d 112490 4.4 4939 3.4 3825

141

WILSTAR & NATHAN GOLDENBERG

MS WILSTAR SHOTTLE ISABELLE

66731631

Born: February 5, 2009

Picston Shottle-ET

GBR 598172 EX-95-GBR GM 8/08 *TV *TL

PTA +2165M +101F +63P 99R 4/09

PTA +4.0PL 2.66SCS -2.0DPR

PTA +4.20T +3.31UDC +3.10FLC 99R 4/09

GTPI +2269M

MD-Maple-Dell Roy Ingrid-ET

62208969

Lost due to calving complications

Full sister to Ingrid

MD-Maple-Dell Roy Image EX-95 EEEEE

3-01 2x 365d 33200 3.3 1081 3.0 989

• Res All-American Jr 3-Year-Old 2006

3rd Dam

MD-Maple-Dell VG Image VG-87 VG-MS DOM

7-11 2x 304d 27460 4.8 1306 3.1 852

Life: 2284d 149330 4.8 7168 3.3 4954

Roylane Jordan-ET

17064727 Excellent-95 GM 2/04 *TV *TL

PTA +49M +7F -1P 99R 4/09

PTA +2.95T +2.83UDC +.86FLC 99R GTPI +1380M

MD-Maple-Dell Encore Ina-ET

130985628 Excellent-95 EEEEE 2E

4-09 2x 365d 32270 4.5 1463 3.4 1092

3-02 2x 356d 25650 4.2 1069 3.4 874

2-02 2x 303d 20310 4.0 808 3.3 680

Life: 1531d 112490 4.4 4939 3.4 3825

142

PATRON KITE PRETTY

64395216

Born: November 11, 2007

Carries embryo implanted March 20, 2009

Goldwyn x Farmdale Canyon Dazzle EX-94 2E (Lot 4)

Markwell Kite-ET

128460878 *RC *TV *TL

PTA -858M -12F -26P 99R 4/09

PTA +2.94T +2.02UDC +.34FLC 99R 4/09

GTPI +948M

Patron Durham Patches

133335169 Very Good-86

4-02 2x 305d 19780 4.3 856 3.5 686

3-02 2x 305d 18880 4.2 794 3.4 637

2-01 2x 305d 15960 3.8 609 3.3 525

Donnandale Skychief-ET

391661C EX-CAN GM 2/01 *TL

PTA +43M +1F +1P 99R 1/09

PTA +1.89T +1.73UDC -.38FLC TPI +1345M

Stokey Elm Park Blackrose-ET

14085789 Excellent-96 3E GMD DOM

5-03 3x 365d 42230 4.6 1939 3.4 1432

• All-American & All-Canadian Jr 3 Yr 1993

Regancrest Elton Durham-ET

2250783 Excellent-90 GM 8/01 *TR *CV *TL

PTA +46M -23F +17P 99R 4/09

PTA +3.05T +3.08UDC +2.59FLC GTPI +1564M

Patron Douglas Pantene

15772754 Very Good-88 EVEV

6-01 2x 295d 23300 3.4 803 2.9 685

3-02 2x 305d 22010 3.6 790 2.9 642

5-01 2x 287d 21730 3.4 738 3.0 651

Life: 1804d 117150 3.5 4102 3.0 3501

143

LYN-LAND EMORY ROXETTE-ET

61655717 Excellent-90 EVVVE @ 3-05

Born: July 8, 2004

3-02 2x 365d 28540 3.9 1108 3.1 883

2-01 2x 335d 23050 3.8 884 2.9 679

4-06 2x 87d 10104 3.8 385 2.6 259 RIP

Bred: April 25, 2009 to Den-K Marshall LL Laurin

MJR Blackstar Emory-ET

2114601 Excellent-97 GM 2/00 *TV *TL

PTA +507M -15F -1P 99R 4/09

PTA +0.2PL 2.97SCS -1.6DPR

PTA +1.67T +1.40UDC +1.68FLC 99R 4/09

GTPI +1206M

Roulette Choice Birdie-ET

15038236 Very Good-88 EX-MS

3-01 3x 365d 35650 4.0 1421 3.2 1134

4-03 2x 365d 33870 4.5 1521 3.2 1089

2-00 3x 365d 31280 3.7 1172 3.1 963

6-00 2x 305d 29590 4.2 1236 3.1 904

Life: 1891d 166920 4.1 6838 3.2 5331

To-Mar Blackstar-ET

1929410 Excellent-93 GM 1/96 *TV *TL

PTA -488M -19F -15P 99R 4/09

PTA +.48T -.05UDC -.01FLC GTPI +1021G

MJR Rotate Elsie

12600262 Very Good-88 EX-MS DOM

3-07 2x 365d 31400 3.4 1080 3.0 941

Life: 1639d 109130 3.5 3794 3.0 3235

The Choice of Mark Adam-ET

2027062 Very Good-86 GM 7/94 *TV *TL

PTA -285M -27F -8P 99R 4/09

PTA -.20T +.78UDC -2.54FLC GTPI +948M

Roulette Birdie

12398426 Very Good-88 VEVV GMD DOM

5-11 2x 365d 41330 4.9 2020 3.3 1358

3-08 2x 365d 36380 4.8 1742 3.3 1208

2-01 2x 365d 28830 4.6 1331 3.3 937

Life: 2230d 161460 4.9 7886 3.5 5615

144

WILSTAR BOMBER ROXANNE

66731630

Born: February 4, 2009

Wilstar Elegant Bomber-ET

63193584 *TV *TL

PTA +483M -7F +12P 72R 4/09

PTA +1.5PL 3.06SCS -1.4DPR

PTA +2.38T +2.97UDC +1.76FLC 69R 4/09

GTPI +1426G

Lyn-Land Emory Roxette-ET

61655717 Excellent-90 EVVVE @ 3-05

3-02 2x 365d 28540 3.9 1108 3.1 883

2-01 2x 335d 23050 3.8 884 2.9 679

4-06 2x 87d 10104 3.8 385 2.6 259 RIP

Sells as Lot 143

3rd Dam

Roulette Birdie VG-88 VEVV GMD DOM

5-11 2x 365d 41330 4.9 2020 3.3 1358

Life: 2230d 161460 4.9 7886 3.5 5615

MJR Blackstar Emory-ET

2114601 Excellent-97 GM 2/00 *TV *TL

PTA +507M -15F -1P 99R 4/09

PTA +1.67T +1.40UDC +1.68FLC GTPI +1206M

Roulette Choice Birdie-ET

15038236 Very Good-88 EX-MS

3-01 3x 365d 35650 4.0 1421 3.2 1134

4-03 2x 365d 33870 4.5 1521 3.2 1089

2-00 3x 365d 31280 3.7 1172 3.1 963

6-00 2x 305d 29590 4.2 1236 3.1 904

Life: 1891d 166920 4.1 6838 3.2 5331

145

RAILANE FORBIDDEN BONSAI

61930191 Excellent-90 VEVEE @ 3-07

Born: October 18, 2004

3-00 2x 345d 30240 3.5 1064 3.3 1005

2-01 2x 286d 19050 3.7 704 3.3 623

4-01 2x 164d 16837 4.0 676 3.1 523 RIP

Bred: May 2, 2009 to Solid-Gold Colby-ET

Sandy-Valley Forbidden-ET

17011697 Excellent-93 *TV *TL

PTA +476M +12F +23P 99R 4/09

PTA -1.3PL 3.13SCS -2.0DPR

PTA +1.90T +1.53UDC +.50FLC 99R 4/09

GTPI +1329M

Railane Roy Bonbon

60775584 Good Plus-84 @ 2-11

2-00 3x 340d 26410 3.4 899 3.1 820

MJR Blackstar Emory-ET

2114601 Excellent-97 GM 2/00 *TV *TL

PTA +507M -15F -1P 99R 4/09

PTA +1.67T +1.40UDC +1.68FLC GTPI +1206M

Sandy-Valley Mascot Fran-ET

14741448 Very Good-87 VEVVV GMD DOM *TL

2-02 2x 365d 29280 4.0 1180 3.5 1020

Roylane Jordan-ET

17064727 Excellent-95 GM 2/04 *TV *TL

PTA +49M +7F -1P 99R 4/09

PTA +2.95T +2.83UDC +.86FLC 99R GTPI +1380M

Railane Wesley Bonnet

129562733 Good Plus-84 @ 3-02

2-06 3x 302d 27490 3.3 917 3.2 879