



146

LA-VOL MRSAM TRISHA

138116462

Born: March 2, 2007

Carries embryo implanted November 25, 2008

Laurin x Farmdale Canyon Dazzle EX-94 2E (Lot 4)

Regancrest-MR Drham Sam-ET

207184639 GM 8/06 *TV *TL

PTA +543M +44F +22P 99R 4/09

PTA +2.2PL 2.92SCS -1.6DPR

PTA +2.40T +2.27UDC +2.44FLC 99R 4/09

GTPI +1668M

La-Vol Rolex Thyme

136203616

3-02 2x 300d 27160 3.5 954 3.1 850

2-02 2x 335d 25140 3.5 877 3.1 789

Regancrest Elton Durham-ET

2250783 Excellent-90 GM 8/01 *TR *CV *TL

PTA +46M -23F +17P 99R 4/09

PTA +3.05T +3.08UDC +2.59FLC GTPI +1564M

Sher-Est Emory Swanny

17037800 Excellent-90 EEV 2E DOM *TV

2-02 2x 365d 27720 4.1 1150 3.1 871

4-02 3x 305d 25620 4.4 1136 3.1 807

Latuch Rolex-ET

126366093 Excellent-92 GM 8/07 *TV *TL

PTA +1179M +40F +43P 99R 4/09

PTA +1.53T +1.67UDC +.96FLC GTPI +1615M

La-Vol Duster Tammy

128079618 Good Plus-84 VG-MS @ 4-03

2-02 2x 365d 28240 2.6 730 3.2 894

3-07 2x 329d 24870 3.5 871 3.2 791

4-06 2x 306d 21630 3.3 711 3.4 727

Life: 1475d 102820 3.3 3385 3.2 3336

147

SCHAUMVIEW ENCINO WANDA

139425703

Born: July 2, 2007

Carries embryo implanted February 9, 2009

Lion King x Duchess Advent Delaney EX-90 (Lot 71)

BDGGenetics Encino-ET

60301421 *TV *TL

PTA +1269M +56F +46P 98R 1/09

PTA +1.5PL 2.93SCS +0.3DPR

PTA +2.05T +1.43UDC +3.12FLC 94R 1/09

GTPI +1790M

Schaumview Diamond Whisper

136680727

3-08 2x 305d 26460 3.5 918 3.1 832

4-08 2x 305d 25100 3.3 823 3.2 791

Mara-Thon BW Marshall-ET

2290977 Very Good-86 GM 8/07 *TV *TL

PTA +1654M +34F +38P 99R 4/09

PTA +2.27T +2.16UDC +2.87FLC GTPI +1570M

Shadycrest-H Rick Econo-ET

17166693 Very Good-87 VEEV DOM *TV

2-05 2x 365d 28150 4.0 1118 3.4 963

Far-Near El Ashly Diamond-ET

2264394 Good Plus-83 *CV *TL

PTA +1112M +32F +30P 99R 4/09

PTA +1.07T +.31UDC -.15FLC TPI +1059M

Schaumview Shallet Whiskey

18027928

5-02 2x 305d 27400 3.3 900 3.0 816

4-02 2x 305d 23320 3.5 813 3.1 733

3-02 2x 305d 20000 3.6 722 3.1 619

148

SCHAUMVIEW TRAVIS DEBBIE

139425712

Born: September 8, 2007

Carries embryo implanted May 6, 2009

Durham x Farmdale Canyon Dazzle EX-94 (Lot 4)

Langs-Twin-B T-M Travis-ET

6003334 *TV *TL

PTA +700M +26F +16P 99R 4/09

PTA +3.3PL 2.89SCS +0.4DPR

PTA +.45T +.69UDC +.98FLC 92R 4/09

GTPI +1440G

Schaumview Cosmo Donna

136376037

3-03 2x 248d 13490 4.0 535 3.5 474

Ha-Ho Cubby Manfred-ET

2183007 Good Plus-82 GM 8/03 *TV *TL

PTA +1258M +40F +39P 99R 4/09

PTA -.96T -1.24UDC +.27FLC GTPI +1411M

Chel-Brook Form Trina-ET

17399472 Excellent-90 VEEVE GMD

4-06 2x 365d 38500 3.8 1459 3.1 1187

2-04 2x 365d 32650 4.3 1420 3.3 1073

Co-op London Cosmo-ET

18021429 Very Good-85 GM 1/08 *TV *TL

PTA +1455M +4F +46P 99R 4/09

PTA +.89T +1.16UDC +3.09FLC GTPI +1658M

Schaumview Peti Denise

15592047 Good Plus-81

7-04 2x 305d 27400 3.6 989 2.9 791

3-07 2x 305d 24430 3.8 935 3.0 737

9-08 2x 305d 23210 3.3 759 2.8 659

Life: 2525d 178180 3.7 6601 3.0 5397

149

SCHAUMVIEW JONAH WENDY

139425721

Born: October 25, 2007

Carries embryo implanted May 6, 2009

Durham x Farmdale Canyon Dazzle EX-94 (Lot 4)

O-Bee Jonah-ET

131601400 Excellent-93 *TV *TL

PTA +316M -1F +18P 99R 4/09

PTA -0.5PL 2.82SCS -1.7DPR

PTA +2.37T +2.38UDC +2.76FLC 96R 4/09

TPI +1440

Schaumview Brave Wilson

133038754

4-02 2x 305d 27650 3.6 1005 3.2 892

5-05 2x 305d 22860 3.8 872 3.3 749

2-08 2x 305d 20810 3.9 808 3.2 669

6-05 2x 305d 19520 3.9 757 3.3 642

Life: 1841d 121430 3.8 4675 3.3 4067

Mara-Thon BW Marshall-ET

2290977 Very Good-86 GM 8/07 *TV *TL

PTA +1654M +34F +38P 99R 4/09

PTA +2.27T +2.16UDC +2.87FLC GTPI +1570M

Meier-Meadows El Jezebel-ET

15459080 Excellent-92 EVEVE GMD DOM *CV *BL

4-02 2x 365d 35082 4.4 1539 3.3 1167

2-02 2x 365d 29430 3.9 1161 3.4 996

Hi-Val Leadman Brave-ET

2158666 Excellent-90 *TL

PTA +49M -23F +6P 99R 4/09

PTA +.40T +.12UDC +1.87FLC TPI +1105M

Schaumview Matt Wendy

17346592

2-08 2x 305d 18090 3.5 631 3.0 546

150

SCHAUMVIEW ARTIC DOLLY

139425758

Born: November 7, 2007

Carries embryo implanted February 9, 2009

Goldwyn x Farmdale Canyon Dazzle EX-94 2E (Lot 4)

Canyon-Breeze Hrl Artic-ET

131934036 Very Good-87 GM 1/08 *TV *TL

PTA +1326M +22F +38P 98R 4/09

PTA -0.7PL 3.02SCS -1.4DPR

PTA +2.19T +2.02UDC +1.73FLC 94R 4/09

GTPI +1537G

Schaumview Romeo Daisy

17344472 Good Plus-82

5-07 2x 305d 27390 3.2 881 2.8 770

8-01 2x 305d 24920 3.3 826 2.7 666

6-10 2x 305d 24260 3.2 775 2.9 713

4-06 2x 305d 23270 3.2 738 3.0 700

9-04 2x 305d 21290 3.3 712 2.9 624

Life: 3122d 211480 3.4 7122 3.0 6254

3rd Dam

Schaumview RA Wonder Dottie VG-86 VG-MS

10-8 2x 305d 24610 3.9 964 2.9 704

Life: 2440d 175410 3.7 6458 3.0 5234

Duncan Black Romeo-ET

2140608 Good Plus-82 GM 2/03 *TV *TL

PTA +333M +38F +7P 99R 4/09

PTA +.77T -.15UDC +.52FLC GTPI +1318M

Schaumview Rambo Dawn

15592076

151

SCHAUMVIEW RSVP DEE

139091403

Born: January 29, 2007

Carries embryo implanted December 22, 2008

Picston Shottle-ET x Wilstar TS Justine (Lot 192)

Kamps-Hollow Convcd RSVP-ET

12976641 Excellent-90 *TV *TL

PTA +1464M +91F +50P 99R 4/09

PTA -0.3PL 3.14SCS -2.0DPR

PTA +1.92T +1.11UDC +2.91FLC 97R 4/09

GTPI +1690M

Schaumview Copper Dusty

136376019

3-06 2x 305d 22070 3.9 860 3.5 767

4-06 2x 305d 21110 3.9 823 3.5 732

6-00 2x 305d 19430 3.8 738 3.4 670

Wa-Del Convincer-ET

2249055 Excellent-95 *CV *TL

PTA +856M +40F +23P 99R 4/09

PTA +.78T +.42UDC +.64FLC TPI +1214M

Kamps-Hollow Reyna

17041480 Very Good-85 VG-MS GMD DOM

2-07 2x 365d 40110 3.8 1532 3.0 1195

Life: 1345d 121330 3.9 4732 3.0 3699

Hunsberger Elton Copper-ET

2265082 Very Good-88 *CV *TL

PTA +546M +8F +7P 99R 4/09

PTA +.77T +1.63UDC -1.06FLC GTPI +1068M

Schaumview Chair Val Doris

14883546 Good Plus-82

7-02 2x 301d 26470 3.3 867 3.0 805

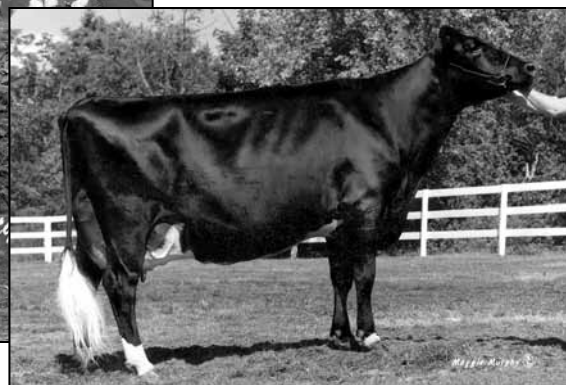
4-07 2x 305d 23800 3.0 712 3.1 737

12-0 2x 305d 23000 3.2 747 3.0 682

Life: 3559d 234000 3.2 7552 3.1 7268



WILCOXVIEW RUDOLPH PATRICE EX-93 2E DOM
2ND DAM OF LOTS 152 & 153



EL-DOR SABER PANSY EX-95 3E GMD DOM
5TH DAM OF LOTS 152 & 153

152

BUR-WALL MR BURNS PRIM-TW

139004702 • Born: January 19, 2008 *TR

Bred: May 1, 2009 to To-Mar D-Fortune-ET

Dudoc Mr Burns-ET

100745543C GP-83 SP'07 *RC *TV *TL
PTA +1377M +45F +57P 83R 4/09
PTA +0.8PL 3.12SCS -0.6DPR
PTA +3.23T +2.27UDC +2.50FLC 78R 4/09
GTPI +1822G

Bur-Wall Eland Pat

131879861 Excellent-90 EVEVE 2E
5-00 2x 365d 26880 4.3 1165 3.4 902
3-07 2x 365d 25370 4.2 1061 3.3 834
2-01 2x 365d 23290 4.4 1036 3.3 765

153

BUR-WALL MR BURNS PROPER-TW

139004711 • Born: January 19, 2008 *RC

Bred: March 26, 2009 to Hurtgen-Vue Reality-Red

Markim Thunder

17144785C VG-85-CAN ST'01 *TV *TL
PTA +211M -11F +16P 92R 4/09
PTA +2.13T +1.06UDC +2.21FLC GTPI +1281G

Granduc Maggie Storm-TW-ET

6873985C VG-87 VEEV-CAN *2 STAR
3-09 2x 365d 48356 3.9 1870 3.1 1510
Life: 4 Lact 170603 3.7 6336 3.2 5505

Four-Of-A-Kind Eland-ET

17002605 Excellent-94 *TV *TL
PTA -140M +28F -20P 99R 4/09
PTA +1.47T +.67UDC +1.73FLC GTPI +1246M

Wilcoxview Rudolph Patrice

120226520 Excellent-93 EEEEE 2E *TV DOM
6-07 2x 365d 35930 4.3 1557 3.2 1158
3-09 2x 365d 35380 4.3 1538 3.2 1132
2-06 2x 365d 27560 4.2 1163 3.3 904
Life: 1708d 127690 4.3 5495 3.3 4276

4th Dam

Lylehaven Star Philly-ET EX-91 EEEEE DOM

3-04 2x 365d 33740 3.7 1251 3.3 1102
2-02 3x 305d 22510 3.8 860 3.2 725
• 1st Jr 2-Yr-Old Vermont State Show 1994

5th Dam

El-Dor Saber Pansy EX-95 3E GMD DOM

3-03 2x 365d 37200 4.1 1532 3.3 1246
Life: 1664d 143910 4.0 5753 3.3 4751
• Nom All-American 1990, 1991, 1993
• Grand Champion Eastern States 1993

6th Dam

El-Dor Forcaster VG-88 VEEV DOM

5-08 2x 305d 21620 5.0 1088 3.8 824
4-07 2x 305d 21390 4.9 1048 3.7 786

Startmore Rudolph-ET

5470579C EX-CAN GM 2/04 *TV *TL
PTA +865M +16F +26P 99R 4/09
PTA +.88T +.94UDC -.54FLC GTPI +1535M

Lylehaven-Wood Sky Philo-ET

15804398 Excellent-93 EEEEE 2E DOM
6-01 2x 365d 40530 4.1 1676 3.2 1281
4-04 2x 365d 29930 3.7 1118 3.3 999
Life: 1866d 139890 4.0 5634 3.3 4674
• Nom All-American 5-Yr-Old Cow 2000
• Grand Champion Western Fall/Nat 2000