

154

GAJOLY GIBSON TAMMY

64395212

Born: October 3, 2007

Carries embryo implanted February 9, 2009
Lion King x Duchess Advent Delaney EX-90 (Lot 71)

Silky Gibson-ET

6215479C EX-CAN ST'99 *TV *TL
PTA -545M +26F -7P 99R 4/09
PTA +1.8PL 2.82SCS -1.6DPR
PTA +2.32T +2.02UDC +.75FLC 99R 4/09
GTPI +1330M

Gajoly Dallas Tatum

134212933 Very Good-85 VG-MS

Juniper Rotate Jed-ET

2040728 Excellent-96 GM 1/95 *TV *TL
PTA -587M +8F -17P 99R 4/09
PTA +1.22T 1.09UDC +.38FLC GTPI +950M

Elkendale Cleitus Impala-ET

13424961 Very Good-85 DOM
3-03 2x 365d 30558 4.1 1257 3.4 1047
2-01 2x 357d 23320 4.4 1033 3.5 810

Regancrest Dallas-ET

207184394
PTA -640M -5F -2P 79R 4/09
PTA +2.36T +1.38UDC +2.33FLC TPI +1231

Gajoly Rambo Tattoo

15735696 Very Good-87

4th Dam

Opps Bootmaker Astro Rita EX-90 VEEE 2E

5-09 2x 365d 30200 3.5 1064 3.1 941
Life: 2368d 145760 3.7 5346 3.1 3390

5th Dam

E-F Bootmaker Lola Rita VG-87 GMD DOM

10-5 2x 350d 22320 3.4 766
Life: 2809d 158630 3.5 5507

Applenotch Rotate Rambo

1987257 Excellent-90 GM *TV *TL
PTA -710M +10F -13P 99R 4/09
PTA -.73T -.42UDC +.29FLC GTPI +948G

Opps A-R Tonia

12541410 Very Good-88 VG-MS
3-09 2x 305d 20330 3.5 707 3.1 631
2-00 2x 330d 16160 3.9 625 3.4 549

155

DAN-DEAN MARTYSTAR ANGEL-ET

63438867

Born: September 10, 2006

2-04 2x 95d 6676 4.2 279 2.9 191 RIP

Bred: May 6, 2009 to To-Mar D-Fortune-ET

Ricecrest Marty-ET

2231562 EX-CAN *TV *TL
PTA +465M +3F +10P 99R 4/09
PTA +0.6PL 2.99SCS +1.1DPR
PTA +.59T +1.33UDC +.28FLC 99R 4/09
GTPI +1264M

Fabulous Inka B Starlete-ET

14492115 Very Good-86 VG-MS GMD DOM
2-11 2x 365d 29660 3.6 1066 3.1 919
4-04 2x 305d 28350 3.5 990 3.1 888

Tesk-Holm Valiant Rockie

1841366 Excellent-96 GM 8/97 *TV *TL
PTA -.46M -17F +2P 99R 4/09
PTA -.12T +.04UDC +.19FLC GTPI +1026G

Wa-Del RC Bickstr Martha-ET

13907649 Excellent-93 EEEEE 2E GMD DOM *TV
5-04 2x 365d 38840 4.2 1643 3.0 1178
Life: 1368d 103068 4.2 4341 3.1 3226

To-Mar Blackstar-ET

1929410 Excellent-93 GM 1/96 *TV *TL
PTA -488M -19F -15P 99R 4/09
PTA +.48T -.05UDC -.01FLC GTPI +1021G

Heimdal Glendell Inka

9764845 Very Good-88 VEEV GMD DOM
5-02 3x 365d 38940 3.7 1423 3.0 1181
4-00 2x 365d 33390 3.9 1308 3.0 1012
6-11 3x 365d 32350 4.5 1445 3.1 1006
Life: 2039d 161770 4.0 6499 3.1 5005

3rd Dam

Vernway Astronaut Inka VG-86 GMD DOM

6-02 2x 365d 28650 4.2 1194
Life: 8 Lact 190843 3.9 7438

4th Dam

Vernway Matt Inka GP-83 VG-MS

3-06 2x 365d 22220 4.2 935

5th Dam

Vernway Royal Magic Inka VG-85

6-08 2x 365d 20660 3.4 712
Life: 2640d 135160 3.6 4912

6th Dam

Vernway Magic Irene EX-91 EEEE

7-02 2x 301d 17260 3.8 664

7th Dam

Vernway Specialist Inka GP-82

3-04 2x 314d 17310 3.4 584

8th Dam

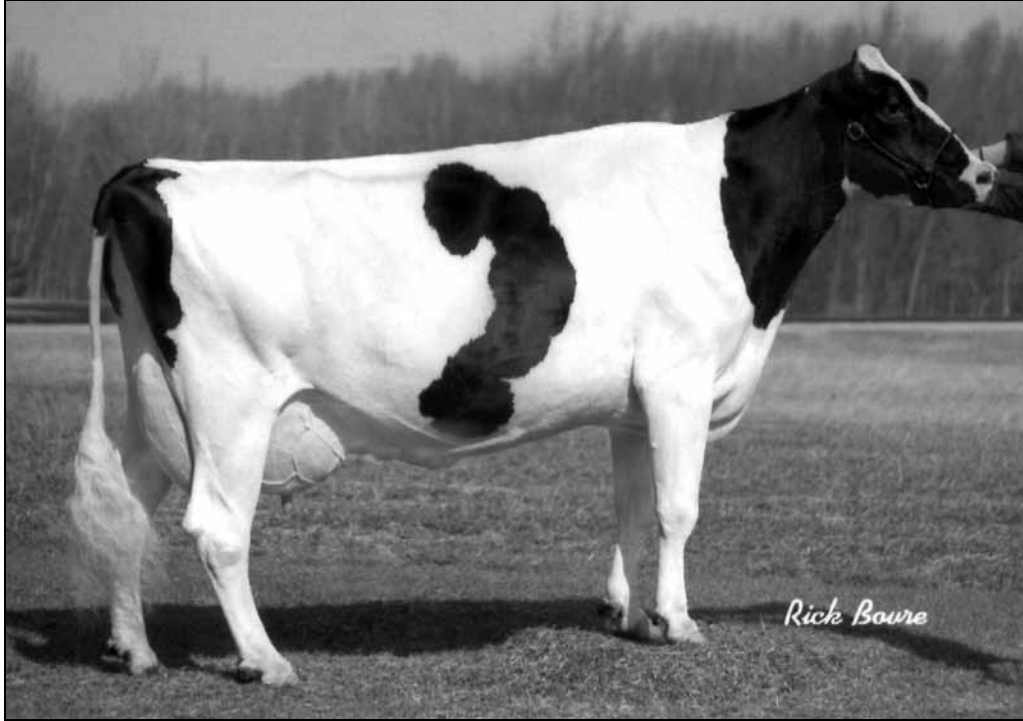
Vernway Princess Inka VG-87 VVVV

3-03 2x 353d 19200 3.2 607
Life: 2827d 127821 3.4 4393

9th Dam

Vernway Inka VG-87 VVVV

10-8 2x 365d 20071 3.4 673
Life: 3479d 159183 3.2 5148



CHRIS-CARL STAMP BETHANY EX-92 VEEEE
2ND DAM OF LOT 156

156

WILSTAR ENCORE BAILEY

134746399 Excellent-90 EEEVV
Born: July 1, 2003
4-06 2x 355d 36360 4.0 1461 3.2 1161
3-02 2x 365d 28210 3.9 1104 3.3 919
1-11 2x 365d 25160 4.1 1030 3.4 848
5-07 2x 89d 11672 4.3 502 3.0 348 RIP

Bred: April 4, 2009 to Michael Storm Avalanche

Hanoverhill Starbuck

352790C EX-CAN EXTRA'90 *TV *TL GTPI +906G

Van-Vliet Oakie Pres Ellbank

11316154 Excellent-90 EEEV 2E DOM
3-06 2x 333d 25040 3.9 969 3.0 755
Life: 1578d 113680 3.7 4236 3.1 3526

Parker Aero Wade-ET

2182318 Good-79 GM 11/00 *TV *TL
PTA +62M -5F +10P 99R 4/09
PTA +1.25T +2.10UDC +1.51FLC TPI +1353M

Chris-Carl Stamp Bethany

15981260 Excellent-92 VEEEE
3-02 2x 365d 30660 3.2 983 2.9 877
6-01 3x 305d 30540 2.7 810 2.8 862
7-05 2x 305d 28450 2.6 749 2.8 785
4-04 2x 286d 27000 2.9 793 3.0 806
2-01 2x 340d 25680 2.9 750 2.9 757
Life: 2459d 204090 3.0 6048 2.9 5918

Full sister to Bailey

Chris-Carl Encore Bacardi EX-92 EEEVE 2E

4-11 2x 344d 32840 3.3 1070 3.2 1042
Life: 1716d 140930 3.4 4798 3.3 4619

Marcrest Encore

2048702 Excellent-96 GM 2/99 *TV *TL
PTA -476M -9F -13P 99R 4/09
PTA -1.4PL 3.21SCS -0.3DPR
PTA +1.89T +1.59UDC +.36FLC 99R 4/09
GTPI +1058M

Chris-Carl Wade Beth

123853875 Excellent-90 VEVEE 2E
3-10 2x 365d 25838 3.5 906 3.1 800
6-01 2x 338d 23860 3.7 888 3.2 757
2-11 2x 313d 23820 3.4 809 3.1 727
5-02 2x 284d 20830 3.0 631 3.2 675
1-11 2x 330d 18880 3.7 701 3.2 596
Life: 1683d 115580 3.5 4028 3.2 3671

3rd Dam

Chris-Carl Target Beth GP-80

2-07 2x 332d 19580 3.6 703 3.3 646

4th Dam

Chris-Carl Columbus Lily EX-93 EEEEE 5E GMD

10-4 2x 365d 27100 4.1 1122 3.1 831
Life: 4360d 278050 3.9 10832 3.1 8745

5th Dam

Chris-Carl Chief Melissa EX-90 VEEE 2E GMD

6-11 2x 365d 30310 3.5 1069 2.9 870
Life: 3889d 249580 3.6 8908 3.0 7428

6th Dam

Chris-Carl Rebel Golden Jill VG-85 VG-MS

4-09 2x 365d 22200 4.2 927 3.1 686

7th Dam

Chris-Carl Rebel Emma VG-87 VG-MS

7-00 2x 365d 21480 4.2 907 3.3 713
Life: 2377d 120950 4.3 5204

157

WILSTAR ZENITH BARBIE

64470431

Born: February 2, 2009

Ocean-View Zenith-TW-ET

12800008 GM 8/08 *TV *TL
PTA +232M +29F +18P 99R 4/09
PTA +2.5PL 2.60SCS +1.5DPR
PTA +2.16T +2.36UDC +.14FLC 99R 4/09
GTPI +1669M

Wilstar Encore Bailey

134746399 Excellent-90 EEEVV
4-06 2x 355d 36360 4.0 1461 3.2 1161
3-02 2x 365d 28210 3.9 1104 3.3 919
1-11 2x 365d 25160 4.1 1030 3.4 848
5-07 2x 89d 11672 4.3 502 3.0 348 RIP
Sells as Lot 156

Regancrest Elton Durham-ET

2250783 Excellent-90 GM 8/01 *TR *CV *TL
PTA +46M -23F +17P 99R 4/09
PTA +3.05T +3.08UDC +2.59FLC GTPI +1564M

Ocean-View Mandel Zandra

15982323 Excellent-95 EEEEE 2E GMD DOM
3-09 2x 365d 37710 4.2 1597 3.3 1253
• *Int Champion Western Fall National 1998*

Marcrest Encore

2048702 Excellent-96 GM 2/99 *TV *TL
PTA -476M -9F -13P 99R 4/09
PTA +1.89T +1.59UDC +.36FLC GTPI +1058M

Chris-Carl Wade Beth

123853875 Excellent-90 VEVEE 2E
3-10 2x 365d 25838 3.5 906 3.1 800
6-01 2x 338d 23860 3.7 888 3.2 757
2-11 2x 313d 23820 3.4 809 3.1 727
5-02 2x 284d 20830 3.0 631 3.2 675
1-11 2x 330d 18880 3.7 701 3.2 596
Life: 1683d 115580 3.5 4028 3.2 3671

3rd Dam

Chris-Carl Stamp Bethany EX-92 VEEEEE
3-02 2x 365d 30660 3.2 983 2.9 877
Life: 2459d 204090 3.0 6048 2.9 5918

4th Dam

Chris-Carl Target Beth GP-80
2-07 2x 332d 19580 3.6 703 3.3 646

5th Dam

Chris-Carl Columbus Lily EX-93 EEEEE 5E GMD
10-4 2x 365d 27100 4.1 1122 3.1 831
Life: 4360d 278050 3.9 10832 3.1 8745

6th Dam

Chris-Carl Chief Melissa EX-90 VEEE 2E GMD
6-11 2x 365d 30310 3.5 1069 2.9 870
Life: 3889d 249580 3.6 8908 3.0 7428

7th Dam

Chris-Carl Rebel Golden Jill VG-85 VG-MS
4-09 2x 365d 22200 4.2 927 3.1 686

8th Dam

Chris-Carl Rebel Emma VG-87 VG-MS
7-00 2x 365d 21480 4.2 907 3.3 713
Life: 2377d 120950 4.3 5204

158

WILSTAR GIBSON BOURBAN

61655698 Very Good-88 EVVVV @ 4-04

Born: March 4, 2004

4-03 2x 322d 33879 3.5 1201 3.2 1071 RIP

3-02 2x 319d 26110 3.4 898 3.5 911

Bred: Nov. 12, 2008 to Ocean-View Zenith-TW-ET

Silky Gibson-ET

6215479C EX-CAN ST'99 *TV *TL
PTA -545M +26F -7P 99R 4/09
PTA +1.8PL 2.82SCS -1.6DPR
PTA +2.32T +2.02UDC +.75FLC 99R 4/09
GTPI +1330M

Chris-Carl Encore Bacardi

131200412 Excellent-92 EEEVE 2E
4-11 2x 344d 32840 3.3 1070 3.2 1042
6-01 2x 365d 28380 3.4 970 3.4 966
1-09 2x 362d 27140 3.6 989 3.3 892
3-11 2x 328d 27390 3.4 923 3.2 881
2-11 2x 317d 25540 3.3 846 3.3 838
Life: 1716d 140930 3.4 4798 3.3 4619

Juniper Rotate Jed-ET

2040728 Excellent-96 GM 1/95 *TV *TL
PTA -587M +8F -17P 99R 4/09
PTA +1.22T 1.09UDC +.38FLC GTPI +950M

Elkendale Cleitus Impala-ET

13424961 Very Good-85 DOM
3-03 2x 365d 30558 4.1 1257 3.4 1047
2-01 2x 357d 23320 4.4 1033 3.5 810

Marcrest Encore

2048702 Excellent-96 GM 2/99 *TV *TL
PTA -476M -9F -13P 99R 4/09
PTA +1.89T +1.59UDC +.36FLC GTPI +1058M

Chris-Carl Wade Beth

123853875 Excellent-90 VEVEE 2E
3-10 2x 365d 25838 3.5 906 3.1 800
6-01 2x 338d 23860 3.7 888 3.2 757
2-11 2x 313d 23820 3.4 809 3.1 727
5-02 2x 284d 20830 3.0 631 3.2 675
1-11 2x 330d 18880 3.7 701 3.2 596
Life: 1683d 115580 3.5 4028 3.2 3671

3rd Dam

Chris-Carl Stamp Bethany EX-92 VEEEEE
3-02 2x 365d 30660 3.2 983 2.9 877
Life: 2459d 204090 3.0 6048 2.9 5918

4th Dam

Chris-Carl Target Beth GP-80
2-07 2x 332d 19580 3.6 703 3.3 646

5th Dam

Chris-Carl Columbus Lily EX-93 EEEEE 5E GMD
10-4 2x 365d 27100 4.1 1122 3.1 831
Life: 4360d 278050 3.9 10832 3.1 8745

6th Dam

Chris-Carl Chief Melissa EX-90 VEEE 2E GMD
6-11 2x 365d 30310 3.5 1069 2.9 870
Life: 3889d 249580 3.6 8908 3.0 7428

7th Dam

Chris-Carl Rebel Golden Jill VG-85 VG-MS
4-09 2x 365d 22200 4.2 927 3.1 686

8th Dam

Chris-Carl Rebel Emma VG-87 VG-MS
7-00 2x 365d 21480 4.2 907 3.3 713
Life: 2377d 120950 4.3 5204