



WILSTAR DUNDEE D-LITE EX-90 EEEVV
SELLS AS LOT 159



HORIZAHN JOLT D-KAY EX-94 EEEEE 3E
DAM OF LOT 159

159

BLAKE KLESSIG

Regancrest Dundee-ET

127640114 Excellent-95 *TV *TL
PTA -52M -11F +3P 99R 4/09
PTA -1.8PL 3.02SCS -0.2DPR
PTA +3.04T +3.00UDC +1.56FLC 99R 4/09
GTPI +1359M

Horizahn Jolt D-Kay

126428238 Excellent-94 EEEEE 3E
8-08 3x 365d 34370 4.2 1458 3.5 1192
6-05 2x 344d 30960 3.3 1032 2.9 886
4-04 2x 350d 30610 3.3 1016 3.0 927
7-06 3x 365d 29600 3.6 1072 3.0 885
5-05 2x 320d 29170 3.6 1049 3.0 881
3-03 2x 305d 21320 3.2 918 3.0 834
2-01 2x 305d 17800 3.3 593 2.9 523
Life: 2611d 207320 3.6 7421 3.1 6396

WILSTAR DUNDEE D-LITE

62036526 Excellent-90 EEEVV @ 3-07
Born: March 1, 2005
3-02 2x 346d 29784 3.5 1056 3.0 886 RIP
2-00 2x 365d 27890 3.7 1029 3.3 916

Bred: Oct. 24, 2008 to Emerald-Acr-SA T-Baxter-ET

Marcrest Encore

2048702 Excellent-96 GM 2/99 *TV *TL
PTA -476M -9F -13P 99R 4/09
PTA +1.89T +1.59UDC +.36FLC GTPI +1058M

Snow-N Denises Dellia

12895802 Excellent-95 2E GMD DOM *TV *TL
6-00 2x 365d 35230 4.0 1425 3.0 1049
Life: 2558d 180240 3.9 7108 3.2 5723

Second-Look Jolt

2149849 Excellent-90 GM 8/03 *TV *TL
PTA -378M +34F +0P 99R 4/09
PTA +1.58T +1.00UDC +1.35FLC GTPI +1377M

Arlanda Blackstar Dove-ET

14401808 Very Good-87 DOM
9-00 2x 305d 26160 3.1 811 2.8 733
4-09 2x 305d 25140 3.8 953 2.9 734
7-07 2x 305d 25050 3.3 835 3.1 776
3-07 2x 365d 23050 3.8 876 3.1 709
6-05 2x 305d 23230 3.8 891 3.0 690
Life: 2091d 148180 3.6 5408 3.0 4459

- 5th Jr 2-Yr-Old Cow WI District 7 Show 2007
- 1st Jr 2-Yr-Old Cow WI District 7 Jr Show 2007

4th Dam

Wauregan Boots Darla-ET EX-90 EX-MS 3E

6-04 2x 365d 28410 4.1 1157 3.0 849
Life: 2789d 165100 4.1 6782 3.0 5027

5th Dam

Brooknoll Elevation Dana EX-93 3E GMD DOM

11-3 2x 365d 30310 3.8 1165
Life: 2971d 204211 4.2 8542

6th Dam

Brooknoll Matt Dixie EX-90 EEVE

6-11 2x 365d 31810 4.0 1264
Life: 2006d 132980 3.9 5246

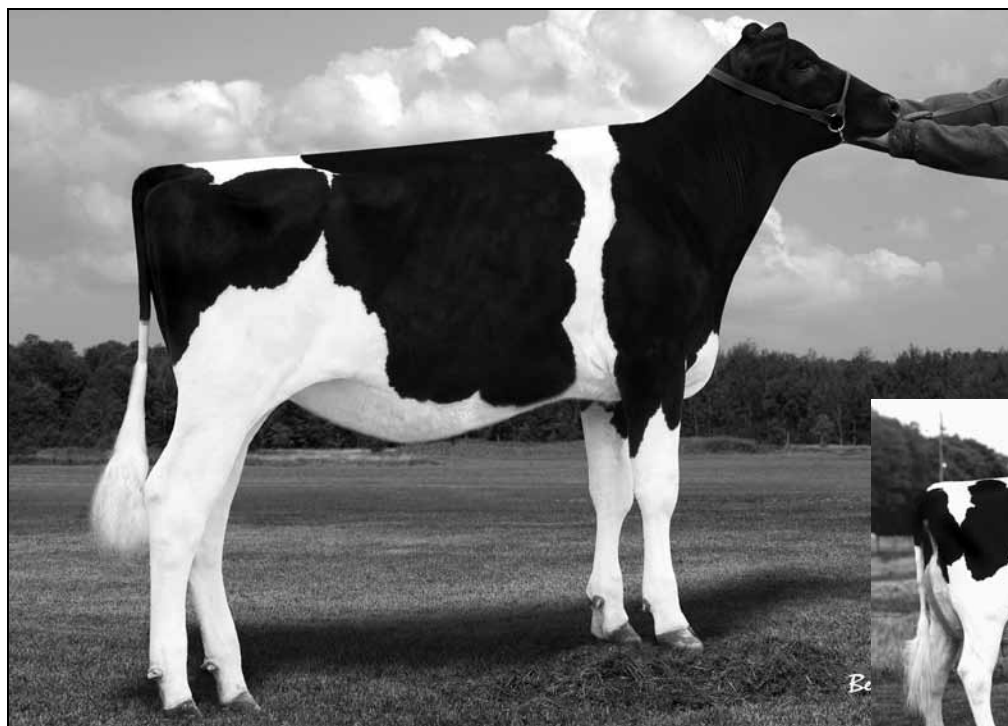
To-Mar Blackstar-ET

1929410 Excellent-93 GM 1/96 *TV *TL
PTA -488M -19F -15P 99R 4/09
PTA +.48T -.05UDC -.01FLC GTPI +1021G

Miss Valiant Doreen

12540638 Excellent-94 EEEEE 3E
4-04 2x 363d 28630 4.2 1193 3.4 977
6-06 2x 305d 26080 4.2 1096 3.3 863
8-05 2x 305d 23550 4.3 1022 3.2 755

- Grand Champion WI Championship Show 1992
- Grand Champion Minnesota State Fair 1992
- Res All-Wisconsin 4-Yr-Old Cow 1990



WIN-K LAURIN D-LILA
SELLS AS LOT 160



MISS VALIANT DOREEN EX-94 EEEEE 3E
3RD DAM OF LOT 159

160

BLAKE & HOPE KLESSIG

WIN-K LAURIN D-LILA

64470397
Born: May 21, 2008

Den-K Marshall LL Laurin

132480026 Excellent-94 *TR *TV *TL
PTA +1196M +48F +33P 89R 4/09
PTA +0.6PL 2.92SCS -0.9DPR
PTA +3.20T +2.24UDC +2.52FLC 85R 4/09
GTPI +1707G

Wilstar Dundee D-Lite

62036526 Excellent-90 EEEVV @ 3-07
3-02 2x 346d 29784 3.5 1056 3.0 886 RIP
2-00 2x 365d 27890 3.7 1029 3.3 916
• 5th Jr 2-Yr-Old Cow WI District 7 Show 2007
• 1st Jr 2-Yr-Old Cow WI District 7 Jr Show 2007
Sells as Lot 159

Mara-Thon BW Marshall-ET

2290977 Very Good-86 GM 8/07 *TV *TL
PTA +1654M +34F +38P 99R 4/09
PTA +2.27T +2.16UDC +2.87FLC GTPI +1570M

Ms Sunnyhome Lil-Lee

128573064 Excellent-90 EEVVE DOM
3-10 2x 351d 44310 3.2 1430 3.1 1392
Life: 1188d 124960 3.1 3878 3.1 3889

Regancrest Dundee-ET

127640114 Excellent-95 *TV *TL
PTA -52M -11F +3P 99R 4/09
PTA +3.04T +3.00UDC +1.56FLC GTPI +1359M

Horizahn Jolt D-Kay

126428238 Excellent-94 EEEEE 3E
8-08 3x 365d 34370 4.2 1458 3.5 1192
6-05 2x 344d 30960 3.3 1032 2.9 886
4-04 2x 350d 30610 3.3 1016 3.0 927
7-06 3x 365d 29600 3.6 1072 3.0 885
5-05 2x 320d 29170 3.6 1049 3.0 881
3-03 2x 305d 21320 3.2 918 3.0 834
2-01 2x 305d 17800 3.3 593 2.9 523
Life: 2611d 207320 3.6 7421 3.1 6396

3rd Dam

Arlenda Blackstar Dove-ET VG-87 DOM
9-00 2x 305d 26160 3.1 811 2.8 733
Life: 2091d 148180 3.6 5408 3.0 4459

4th Dam

Miss Valiant Doreen EX-94 EEEEE 3E
4-04 2x 363d 28630 4.2 1193 3.4 977
• Grand Champion WI Championship Show 1992
• All-Wisconsin Aged Cow 1992
• Grand Champion Minnesota State Fair 1992
• Res All-Wisconsin 4-Yr-Old Cow 1990

5th Dam

Wauregan Boots Darla-ET EX-90 EX-MS 3E
6-04 2x 365d 28410 4.1 1157 3.0 849
Life: 2789d 165100 4.1 6782 3.0 5027

6th Dam

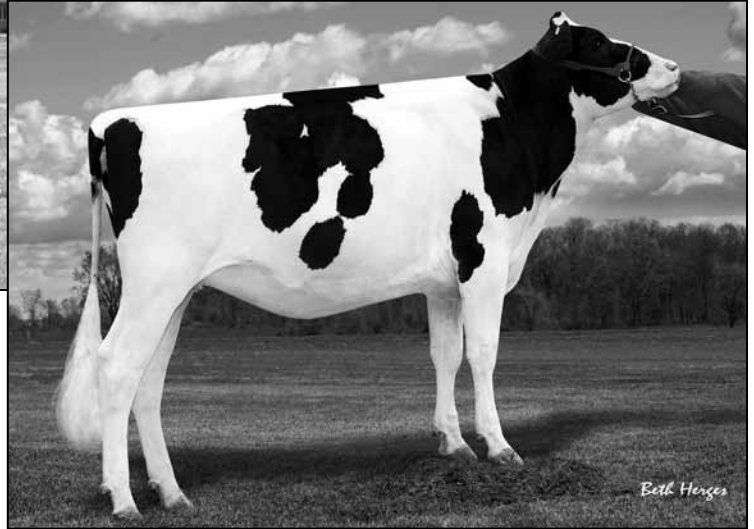
Brooknoll Elevation Dana EX-93 3E GMD DOM
11-3 2x 365d 30310 3.8 1165
Life: 2971d 204211 4.2 8542

7th Dam

Brooknoll Matt Dixie EX-90 EEVE
6-11 2x 365d 31810 4.0 1264
Life: 2006d 132980 3.9 5246



MISS DURHAM MAHI EX-93 EEEVE 2E
SELLS AS LOT 161



WILSTAR LINJET MAUI-ET
SELLS AS LOT 162

161

161A FIVE #1 EMBRYOS

Sire: Sunnyslodge Linjet

161B THREE #1 TWO #2 EMBRYOS

Sire: Sunnyslodge Linjet

Regancrest Elton Durham-ET

2250783 Excellent-90 GM 8/01 *TR *CV *TL
PTA +46M -23F +17P 99R 4/09
PTA +1.3PL 2.88SCS +0.6DPR
PTA +3.05T +3.08UDC +2.59FLC 99R 4/09
GTPI +1564M

Miss Scotty Mimi

17274555 Good Plus-80 @ 4-03
4-04 2x 365d 26000 3.3 851 3.4 879
3-01 2x 320d 20010 3.7 742 3.3 669

MISS DURHAM MAHI

135219054 Excellent-93 EEEVE 2E *B/R *CV *TL *TD
Born: May 8, 2001
6-05 2x 365d 32720 4.7 1530 3.5 1140
4-11 2x 365d 33470 4.0 1338 3.3 1121
3-08 2x 305d 26060 3.8 979 3.4 895
Life: 1292d 107600 4.2 4566 3.5 3754

Bred: Aug. 15, 2008 to Scientific Debonair-Red-ETS

Emprise Bell Elton

1912270 Excellent-95 *CV *BL GTPI +1121G

Snow-N Denises Dellia

12895802 Excellent-95 2E GMD DOM *TV *TL
6-00 2x 365d 35230 4.0 1425 3.0 1049
Life: 2558d 180240 3.9 7108 3.2 5723

Pineyvale TT Scotty-ET

2222346 Very Good-86 *RC
PTA -1769M -10F -39P 95R 4/09
PTA +.43T -79UDC +1.48FLC TPI +810

Albandale Monique Fargo

15101656 Very Good-88 EX-MS @ 5-07
6-11 2x 358d 26350 4.6 1218 3.5 913
5-05 2x 365d 25520 4.4 1128 3.3 845
8-00 2x 305d 20020 4.7 931 3.7 748
4-06 2x 293d 18520 4.6 844 3.1 578
Life: 2049d 124460 4.6 5684 3.5 4336

- Gr Champion Wisconsin District 7 Show 2006
- Best Udder of Show Wisconsin District 7 Show 2006
- 3rd 5-Yr-Old Cow WI Championship 2006
- Gr Champion Wisconsin District 7 Show 2005
- Best Udder of Show Wisconsin District 7 Show 2005
- 1st 4-Yr-Old & BU WI District 7 Show 2005

4th Dam

Albandale Macy Starwars VG-85

4-03 2x 365d 20100 3.4 681 2.8 562
Life: 2133d 109780 3.3 3671 2.8 3112

5th Dam

Albandale Marsha Rocket VG-85 EX-MS

10-0 2x 288d 18370 3.8 695 3.0 542
Life: 3948d 226110 3.5 7917 3.0 6883

Plushanski Fargo-ET

1981946 Good Plus-80 GM
PTA -1034M +8F -19P 99R 4/09
PTA +.94T +1.02UDC +1.03FLC GTPI +1167G

Albandale Macy Ryan

14430917 Very Good-85 @ 3-04
4-02 2x 305d 19290 4.6 881 3.2 613
2-04 2x 305d 15980 4.3 690 3.5 563
5-05 2x 298d 15720 3.8 597 3.2 502
3-03 2x 297d 15290 4.1 627 3.4 524