

162

WILSTAR LINJET MAUI-ET

64470345 *B/R *TV
Born: June 2, 2007

Bred: Nov. 24, 2008 to Golden-Oaks Sr Alexander-ET

Sunnylodge Linjet

5578386C EX-CAN ST'97 *TV *TL
PTA -1247M -13F -24P 99R 4/09
PTA +2.3PL 2.77SCS +0.3DPR
PTA +2.47T +2.43UDC +1.64FLC 99R 4/09
TPI +1272M

Miss Durham Mahi

135219054 Excellent-93 EEEVE 2E *B/R *CV *TL *TD
6-05 2x 365d 32720 4.7 1530 3.5 1140
4-11 2x 365d 33470 4.0 1338 3.3 1121
3-08 2x 305d 26060 3.8 979 3.4 895
Life: 1292d 107600 4.2 4566 3.5 3754
Sells as Lot 161

Townson Lindy-ET

382748C EX-CAN GM 2/99 *TV *TL
PTA -414M -2F +1P 99R 4/09
PTA +.90T +.91UDC +.44FLC GTPI +1072G

Sunnylodge Prelude Spottie

4673689C VG-87-CAN *18 STAR *TL
3-04 2x 365d 30091 4.1 1224 3.5 1058
2-03 2x 325d 22513 4.0 895 3.5 780

Regancrest Elton Durham-ET

2250783 Excellent-90 GM 8/01 *TR *CV *TL
PTA +46M -23F +17P 99R 4/09
PTA +3.05T +3.08UDC +2.59FLC GTPI +1564M

Miss Scotty Mimi

17274555 Good Plus-80 @ 4-03
4-04 2x 365d 26000 3.3 851 3.4 879
3-01 2x 320d 20010 3.7 742 3.3 669

4th Dam

Albandale Macy Ryan VG-85

4-02 2x 305d 19290 4.6 881 3.2 613

5th Dam

Albandale Macy Starwars VG-85

4-03 2x 365d 20100 3.4 681 2.8 562

Life: 2133d 109780 3.3 3671 2.8 3112

6th Dam

Albandale Marsha Rocket VG-85 EX-MS

10-0 2x 288d 18370 3.8 695 3.0 542

Life: 3948d 226110 3.5 7917 3.0 6883

Pineyvale TT Scotty-ET

2222346 Very Good-86 *RC
PTA -1769M -10F -39P 95R 4/09
PTA +.43T -.79UDC +1.48FLC TPI +810

Albandale Monique Fargo

15101656 Very Good-88 EX-MS @ 5-07
6-11 2x 358d 26350 4.6 1218 3.5 913
5-05 2x 365d 25520 4.4 1128 3.3 845
8-00 2x 305d 20020 4.7 931 3.7 748
4-06 2x 293d 18520 4.6 844 3.1 578
Life: 2049d 124460 4.6 5684 3.5 4336

163

CALLIE & BRITNEY OTT

ANTI-KI-Z ALLEN MAYA-ET

62656016 Very Good-85 VG-MS @ 2-07
Born: March 6, 2006
1-11 2x 365d 25857 3.9 1019 3.3 858"

Bred: Oct. 16, 2008 to Wilstar-RS Out Altitude

Canyon-Breeze Allen-ET

17129288 VG-CAN EXTRA'01 *TV
PTA -184M +14F +6P 99R 4/09
PTA +0.0PL 3.16SCS -1.2DPR
PTA +3.05T +2.15UDC +2.34FLC 99R 4/09

Miss Durham Mahi

135219054 Excellent-93 EEEVE 2E *B/R *CV *TL *TD
6-05 2x 365d 32720 4.7 1530 3.5 1140
4-11 2x 365d 33470 4.0 1338 3.3 1121
3-08 2x 305d 26060 3.8 979 3.4 895
Life: 1292d 107600 4.2 4566 3.5 3754
Sells as Lot 161

MJR Blackstar Emory-ET

2114601 Excellent-97 GM 2/00 *TV *TL
PTA +507M -15F -1P 99R 4/09
PTA +1.67T +1.40UDC +1.68FLC GTPI +1206M

Canyon-Breeze Wst Amber-ET

14706235 Excellent-93 EEEEE GMD DOM
2-10 3x 365d 38790 3.7 1420 3.3 1282

• All-Utah Sr 3-Yr-Old Cow 1995

Regancrest Elton Durham-ET

2250783 Excellent-90 GM 8/01 *TR *CV *TL
PTA +46M -23F +17P 99R 4/09
PTA +3.05T +3.08UDC +2.59FLC GTPI +1564M

Miss Scotty Mimi

17274555 Good Plus-80 @ 4-03
4-04 2x 365d 26000 3.3 851 3.4 879
3-01 2x 320d 20010 3.7 742 3.3 669

4th Dam

Albandale Macy Ryan VG-85

4-02 2x 305d 19290 4.6 881 3.2 613

5th Dam

Albandale Macy Starwars VG-85

4-03 2x 365d 20100 3.4 681 2.8 562

Life: 2133d 109780 3.3 3671 2.8 3112

6th Dam

Albandale Marsha Rocket VG-85 EX-MS

10-0 2x 288d 18370 3.8 695 3.0 542

Life: 3948d 226110 3.5 7917 3.0 6883

Pineyvale TT Scotty-ET

2222346 Very Good-86 *RC
PTA -1769M -10F -39P 95R 4/09
PTA +.43T -.79UDC +1.48FLC TPI +810

Albandale Monique Fargo

15101656 Very Good-88 EX-MS @ 5-07
6-11 2x 358d 26350 4.6 1218 3.5 913
5-05 2x 365d 25520 4.4 1128 3.3 845
8-00 2x 305d 20020 4.7 931 3.7 748
4-06 2x 293d 18520 4.6 844 3.1 578
Life: 2049d 124460 4.6 5684 3.5 4336



COURTLANE DURHAM STEPH EX-94 EEEEE
SELLS AS LOT 164

164

Regancrest Elton Durham-ET

2250783 Excellent-90 GM 8/01 *TR *CV *TL
PTA +46M -23F +17P 99R 4/09
PTA +1.3PL 2.88SCS +0.6DPR
PTA +3.05T +3.08UDC +2.59FLC 99R 4/09
GTPI +1564M

Courtlane Jolt Smurf

131451827 Very Good-86 VVVV @ 2-11
2-01 2x 365d 24410 4.5 1092 3.5 846

COURTLANE DURHAM STEPH

134444901 Excellent-94 EEEEE *TR *CV *TL *TD
Born: May 16, 2003
5-00 2x 351d 38368 3.6 1394 3.2 1237 RIP
3-07 2x 365d 32130 4.0 1289 3.4 1095
2-05 2x 365d 25510 4.2 1065 3.6 922

Bred: April 27, 2009 to Jenny-Lou Mrshl Toystory-ET

Emprise Bell Elton

1912270 Excellent-95 *CV *BL GTPI +1121G

Snow-N Denises Dellia

12895802 Excellent-95 2E GMD DOM *TV *TL
6-00 2x 365d 35230 4.0 1425 3.0 1049
Life: 2558d 180240 3.9 7108 3.2 5723

Second-Look Jolt

2149849 Excellent-90 GM 8/03 *TV *TL
PTA -378M +34F +0P 99R 4/09
PTA +1.58T +1.00UDC +1.35FLC GTPI +1377M

Courtlane Highlight Smarty

15940185 Very Good-85 VG-MS @ 4-04
2-04 2x 365d 23570 3.8 892 3.5 823
3-08 2x 347d 21250 3.8 822 3.5 761

4th Dam

Moore-Farms Sexation Smarty EX-91 EVEEE DOM
5-08 2x 363d 29110 4.4 1272 3.7 1082

5th Dam

Moore-Farms Valiant Smurf EX-90 GMD DOM
7-08 2x 334d 31710 4.2 1331 3.4 1085
Life: 2406d 170890 4.4 7454 3.6 6075

• 3rd Dam of Ocean-View Zenith-TW-ET

6th Dam

Moore-Farms Snooty Elevation EX-91 EVEE 2E
5-08 2x 330d 20590 4.4 901 3.4 697
Life: 1771d 107780 4.1 4446 3.3 3545

7th Dam

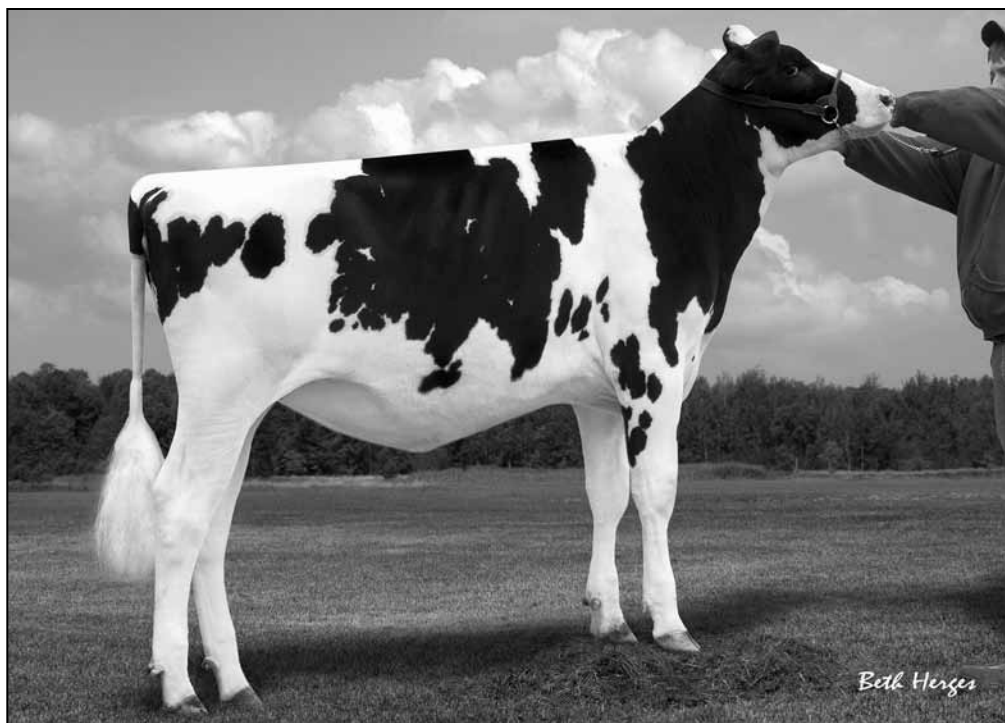
Moore-Farms Fond Snoop-Twin VG-86 VG-MS
7-01 2x 339d 16080 4.5 722 3.7 601
Life: 2375d 124690 4.4 5458 3.5 2417

Highlight Mr Mark Cinder-ET

2014517 Excellent-94 GM 8/98 *CV *TL
PTA +181M -15F -7P 99R 4/09
PTA +1.55T +1.31UDC -.51FLC TPI +996M

Regancrest Prelude Shari-ET

15201218 Very Good-89 VVVVE DOM
9-10 2x 365d 24070 5.1 1226 3.5 844
8-03 2x 365d 21220 4.9 1034 3.6 765
6-00 2x 365d 20390 5.1 1043 3.7 761
5-00 2x 305d 20340 4.1 1029 3.8 765
Life: 2709d 152090 5.0 7625 3.6 5532



WILSTAR AFFIRMED STACIE
SELLS AS LOT 165

165

WILSTAR AFFIRMED STACIE

64470394
Born: May 16, 2008

BKB Affirmed-ET

132277541 *TV *TL
PTA -728M -13F -13P 96R 4/09
PTA +0.4PL 2.74SCS -2.3DPR
PTA +3.05T +2.37UDC +3.07FLC 94R 4/09
GTPI +1295M

Courtlane Durham Steph

134444901 Excellent-94 EEEEE *TR *CV *TL *TD
5-00 2x 351d 38368 3.6 1394 3.2 1237 RIP
3-07 2x 365d 32130 4.0 1289 3.4 1095
2-05 2x 365d 25510 4.2 1065 3.6 922
Sells as Lot 164

Comestar Lee-ET

5757117C EX-CAN GM 8/03 *TV *TL
PTA -145M +31F +5P 99R 4/09
PTA +1.97T +1.24UDC +1.57FLC GTPI +1375M

Shoremar S Alicia-ET

6434408C Excellent-97 EEEEE 3E *BL
6-10 2x 365d 35760 4.3 1544 3.4 1215
• *HM All-Time All-American 5-Yr-Old Cow*

Regancrest Elton Durham-ET

2250783 Excellent-90 GM 8/01 *TR *CV *TL
PTA +46M -23F +17P 99R 4/09
PTA +3.05T +3.08UDC +2.59FLC GTPI +1564M

Courtlane Jolt Smurf

131451827 Very Good-86 VVVVV @ 2-11
2-01 2x 365d 24410 4.5 1092 3.5 846

3rd Dam

Courtlane Highlight Smarty VG-85 VG-MS
2-04 2x 365d 23570 3.8 892 3.5 823

4th Dam

Regancrest Prelude Shari-ET VG-89 DOM
9-10 2x 365d 24070 5.1 1226 3.5 844
Life: 2709d 152090 5.0 7625 3.6 5532

5th Dam

Moore-Farms Sexation Smarty EX-91 EEEEE DOM
5-08 2x 363d 29110 4.4 1272 3.7 1082

6th Dam

Moore-Farms Valiant Smurf EX-90 GMD DOM
7-08 2x 334d 31710 4.2 1331 3.4 1085
Life: 2406d 170890 4.4 7454 3.6 6075

7th Dam

Moore-Farms Snooty Elevation EX-91 EVEE 2E
5-08 2x 330d 20590 4.4 901 3.4 697
Life: 1771d 107780 4.1 4446 3.3 3545

8th Dam

Moore-Farms Fond Snoop-Twin VG-86 VG-MS
7-01 2x 339d 16080 4.5 722 3.7 601
Life: 2375d 124690 4.4 5458 3.5 2417