



KE-JO LAURIN HAPPY-ET
SELLS AS LOT 179

179

KEVIN JORGENSEN

KE-JO LAURIN HAPPY-ET

64470419

Born: November 6, 2008

Den-K Marshall LL Laurin

132480026 Excellent-94 *TR *TV *TL

PTA +1196M +48F +33P 89R 4/09

PTA +0.6PL 2.92SCS -0.9DPR

PTA +3.20T +2.24UDC +2.52FLC 85R 4/09

GTPI +1707G

Brunner-Creek Emerson Hetty

132638456 Excellent-91 VEVEE

3-03 2x 365d 33341 3.7 1222 3.4 1149

4-04 2x 365d 28310 3.7 1041 3.4 966

2-01 2x 365d 26020 3.6 937 3.5 905

Life: 1434d 106390 3.8 4034 3.4 3662

Mara-Thon BW Marshall-ET

2290977 Very Good-86 GM 8/07 *TV *TL

PTA +1654M +34F +38P 99R 4/09

PTA +2.27T +2.16UDC +2.87FLC GTPI +1570M

Ms Sunnyhome Lil-Lee

128573064 Excellent-90 EEVVE DOM

3-10 2x 351d 44310 3.2 1430 3.1 1392

Life: 1188d 124960 3.1 3878 3.1 3889

Ricecrest Emerson-ET

2271271 Excellent-96 *BL *TV

PTA +753M +30F +34P 99R 4/09

PTA +.68T +.82UDC +.52FLC GTPI +1257M

Brunner-Creek Storm Holy-ET

125960810 Excellent-93 EEEVE 2E

3-02 2x 355d 31110 3.4 1057 3.4 1072

4-03 2x 305d 31120 3.3 1024 3.3 1027

2-00 2x 365d 27600 3.1 854 3.4 931

5-04 2x 365d 26950 3.9 1053 3.6 974

Life: 1509d 120210 3.4 4132 3.5 4151

4th Dam

Janestead Quickshot Heidi EX-90 EEVV

4-03 2x 306d 21840 3.1 683 3.0 656

5-03 2x 293d 21630 3.1 672 2.9 631

Maughlin Storm-ET

5457798 EX-CAN GM 8/04 *B/R *TV *TL

PTA +192M +36F +6P 99R 4/09

PTA +1.91T +1.60UDC +2.04FLC GTPI +1424M

Ke-Jo Inspir Halo

14194104 Excellent-90 EEVVE GMD

6-03 2x 365d 42120 3.6 1533 3.3 1404

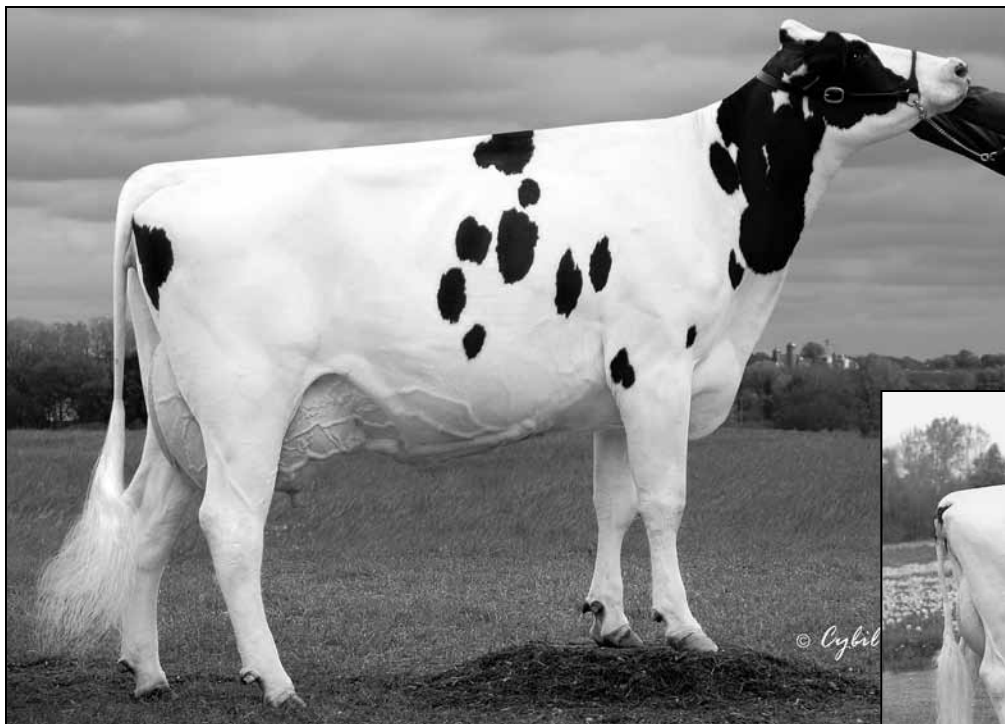
4-11 2x 365d 38460 3.5 1352 3.3 1281

Life: 1814d 159520 3.6 5813 3.3 5310

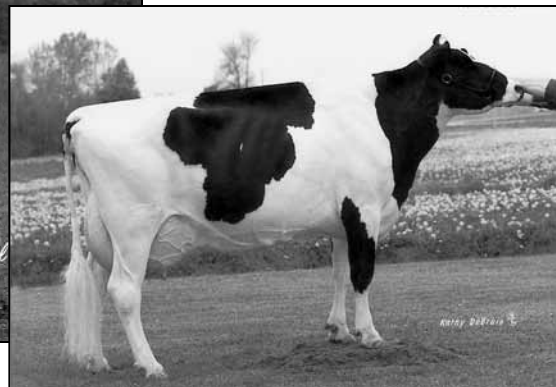
• Res All-Wisconsin Jr 2-Yr-Old Cow 1992

• Res Jr All-Wisconsin Jr 2-Yr-Old Cow 1992

• Res Jr All-Wisconsin Summer Yrlg 1991



WILSTAR-RS OUTSIDE ETERNITY EX-90 EEEEV 2E
SELLS AS LOT 180



BUDJON-JK MASON ELLA-ETS VG-88 EX-MS GMD
DAM OF LOT 180

180

WILSTAR-RS OUTSIDE ETERNITY

134370398 Excellent-90 EEEEV 2E
Born: January 16, 2003 • Donor Dam
5-02 2x 365d 40559 4.1 1670 3.0 1226
3-01 2x 365d 36030 3.8 1369 3.1 1123
2-02 2x 298d 26990 3.9 1055 3.2 863
Life: 1324d 123277 4.0 4893 3.2 3901 to date
Bred: March 27, 2009 to Ocean-View Zenith-TW-ET

Ronnybrook Prelude-ET

392457C GP-81 GM 8/97 *TL GTPI +1117M

Comestar L Or Black-ET

5311227C VG-87-CAN *16 STAR
3-11 2x 365d 35745 3.7 1325 3.0 1056
2-00 2x 365d 22871 3.8 866 3.1 700

Shoremar Mason-ET

5279989C EX-CAN GM 8/99 *TV *TL
PTA -4M -19F +13P 99R 4/09
PTA +.80T +.48UDC -.91FLC GTPI +907M

Krull Broker Elegance

15395294 Excellent-96 EEEEE 3E GMD DOM *TL
5-07 2x 365d 40950 3.7 1522 3.3 1350
8-07 2x 365d 35240 4.4 1550 3.2 1135
Life: 2356d 183710 3.7 6878 3.4 6267

- HM All-American Aged Cow 1999
- HM All-Canadian Mature Cow 1999
- 1st 125,000 Lb Cow International Show 2000
- Wisconsin Cow of Year 2002
- 1st Produce International Show 2001-02-03-04

Comestar Outside-ET

6026421C EX-CAN GM 1/08 *TV *TL
PTA +567M +43F +4P 99R 4/09
PTA +5.1PL 2.98SCS +1.5DPR
PTA +2.02T +1.73UDC +2.18FLC 99R 4/09
GTPI +1650M

Budjon-JK Mason Ella-ETS

121326296 Very Good-88 EX-MS GMD
5-01 2x 360d 37850 3.5 1337 3.2 1201
3-07 2x 365d 35850 3.2 1145 3.2 1148
2-03 2x 365d 24260 3.5 861 3.2 774
Life: 1265d 108860 3.4 3702 3.2 3521

4th Dam

Krull TT Excellency EX-90 VEEE DOM

3-02 2x 363d 24319 3.5 862 3.4 829
Life: 1733d 109780 3.7 4077 3.3 3605

5th Dam

Krull Boot Mark Excellency EX-92 2E GMD

6-06 2x 365d 27410 3.8 1040 3.1 868
Life: 3026d 201440 3.5 7105 3.0 4634

6th Dam

Krull Kingstead Excellency EX-92 4E GMD

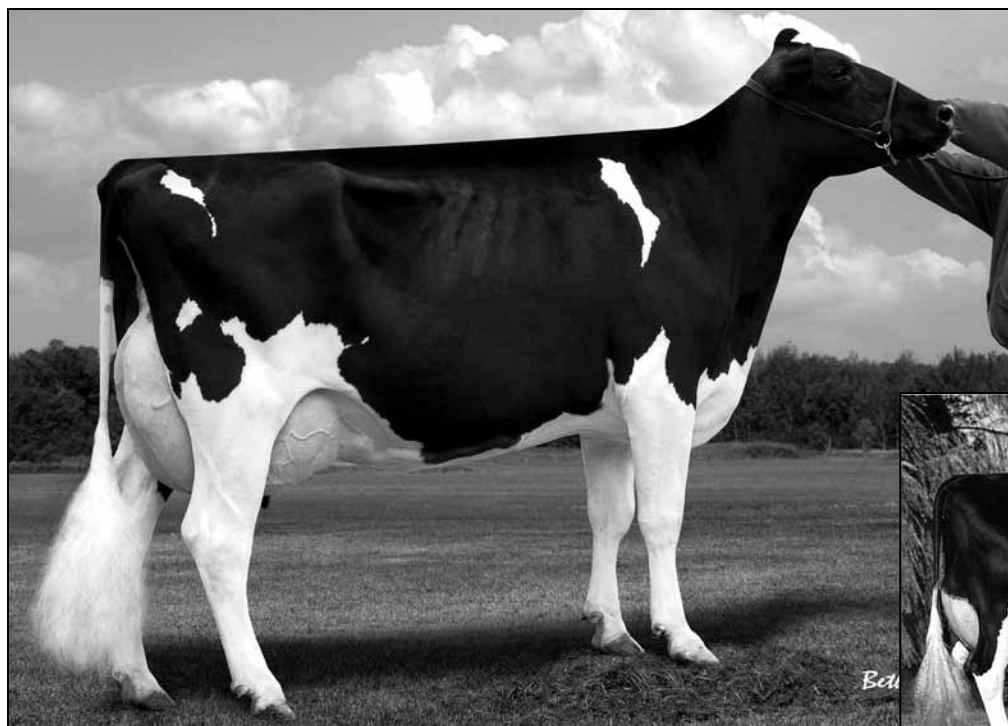
12-4 2x 323d 21920 3.5 772
Life: 3364d 179790 3.6 6436

Conant-Acres-JY Broker-ET

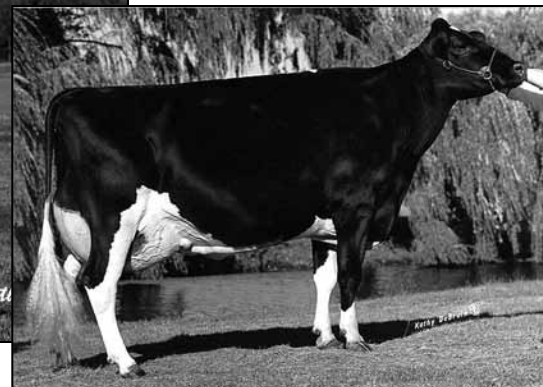
389459C EX-CAN EXTRA'90 *TV *TL
PTA -1106M +3F -21P 99R 4/09
PTA +.92T +.52UDC -.54FLC GTPI +1118G

Krull Starbuck Excellency

14119044 Excellent-90 EEEEV GMD DOM
3-03 2x 365d 27140 3.5 937 3.4 930
2-01 2x 365d 22520 3.8 859 3.4 776



WILSTAR-RS DRHM ESSENCE-ET EX-90 VEVVE
SELLS AS LOT 181



KRULL BROKER ELEGANCE EX-96 3E GMD DOM
2ND DAM OF LOT 180 & 3RD DAM OF LOT 181

181

Regancrest Elton Durham-ET

2250783 Excellent-90 GM 8/01 *TR *CV *TL
PTA +46M -23F +17P 99R 4/09
PTA +1.3PL 2.88SCS +0.6DPR
PTA +3.05T +3.08UDC +2.59FLC 99R 4/09
GTPI +1564M

Wilstar-RS Outside Eternity

134370398 Excellent-90 EEEEEV 2E
5-02 2x 365d 40559 4.1 1670 3.0 1226
3-01 2x 365d 36030 3.8 1369 3.1 1123
2-02 2x 298d 26990 3.9 1055 3.2 863
Life: 1324d 123277 4.0 4893 3.2 3901 to date
Sells as Lot 180

WILSTAR-RS DRHM ESSENCE-ET

62371091 Excellent-90 V EVVE *TR *CV *TL *TD
Born: September 30, 2005
2-11 2x 234d 25106 3.5 887 3.0 749 RIP
1-11 2x 333d 23870 3.7 888 3.3 790

Bred: Jan. 12, 2009 to Picston Shottle-ET

Emprise Bell Elton

1912270 Excellent-95 *CV *BL
PTA +262M +12F +17P 99R 4/09
PTA -.18T -.37UDC +1.75FLC GTPI +1121G

Snow-N Denises Dellia

12895802 Excellent-95 2E GMD DOM *TV *TL
6-00 2x 365d 35230 4.0 1425 3.0 1049
Life: 2558d 180240 3.9 7108 3.2 5723

Comestar Outside-ET

6026421C EX-CAN GM 1/08 *TV *TL
PTA +567M +43F +4P 99R 4/09
PTA +2.02T +1.73UDC +2.18FLC GTPI +1650M

Budjon-JK Mason Ella-ETS

121326296 Very Good-88 EX-MS GMD
5-01 2x 360d 37850 3.5 1337 3.2 1201
3-07 2x 365d 35850 3.2 1145 3.2 1148
2-03 2x 365d 24260 3.5 861 3.2 774
Life: 1265d 108860 3.4 3702 3.2 3521

Embryos sell with Essence

ONE #1 EMBRYO

Sire: Den-L Marshall LL Laurin

3rd Dam

Krull Broker Elegance EX-96 3E GMD DOM

5-07 2x 365d 40950 3.7 1522 3.3 1350
Life: 2356d 183710 3.7 6878 3.4 6267

- HM All-American Aged Cow 1999
- HM All-Canadian Mature Cow 1999
- 1st 125,000 Lb Cow International Show 2000
- Wisconsin Cow of Year 2002
- 1st Produce International Show 2001-02-03-04

4th Dam

Krull Starbuck Excellency EX-90 EEEEEV GMD DOM

3-03 2x 365d 27140 3.5 937 3.4 930

5th Dam

Krull TT Excellency EX-90 VEEE DOM

3-02 2x 363d 24319 3.5 862 3.4 829
Life: 1733d 109780 3.7 4077 3.3 3605

6th Dam

Krull Boot Mark Excellency EX-92 2E GMD

6-06 2x 365d 27410 3.8 1040 3.1 868
Life: 3026d 201440 3.5 7105 3.0 4634

7th Dam

Krull Kingstead Excellency EX-92 4E GMD

12-4 2x 323d 21920 3.5 772
Life: 3364d 179790 3.6 6436