

WILSTAR SHOTTLE DREAMY-ET *RC
SELLS AS LOT 17

17

WILSTAR SHOTTLE DREAMY-ET

64470349 *RC *TL *TD
Born: August 7, 2007 • Donor Dam
P9 PTPI +1734

Bred: Dec. 4, 2008 to Aggravation Lawn Boy P-Red

Carol Prelude Mtoto-ET

6001001962 GM 1/08 *TV *TL
PTA +1061M +40F +21P 99R 4/09
PTA +.99T +.80UDC +1.16FLC GTPI +1641M

Condon Aero Sharon

5373153C EX-91-GBR
5-07 2x 305d 36230 4.3 1561 3.3 1179
4-00 2x 305d 25286 4.3 1508 3.4 1202

Robthom Integrity-ET

2150948 Excellent-96 GM 2/99 *TV *TL
PTA +381M +4F -4P 99R 4/09
PTA +1.60T +1.44UDC +.12FLC GTPI +1067M

Farmdale South Dimple

120662333 Very Good-86
7-02 2x 343d 35350 3.9 1378 3.5 1238
4-05 2x 305d 27110 3.9 1052 3.4 913
5-08 2x 305d 24800 3.9 968 3.3 819

Picston Shottle-ET

GBR 598172 EX-95-GBR GM 8/08 *TV *TL
PTA +2165M +101F +63P 99R 4/09
PTA +4.0PL 2.66SCS -2.0DPR
PTA +4.20T +3.31UDC +3.10FLC 99R 4/09
GTPI +2269M

Farmdale Integrity Dixie

120662388 Excellent-94 EEEVE 3E *RC
5-00 2x 365d 38220 4.1 1564 3.2 1230
7-05 2x 365d 28520 4.0 1142 3.3 935
3-06 2x 305d 22060 3.9 860 3.1 676
2-03 2x 305d 21730 3.8 824 3.2 700
Life: 2479d 179670 4.2 7489 3.5 6252

- Nom Jr All-American 5-Yr-Old 2002
- Junior All-Wisconsin Aged Cow 2003
- 3rd Aged Cow WI Championship Show 2003
- Embryos exported worldwide

17A SIX #1 EMBRYOS

Sire: Braedale Goldwyn

Embryos sell with Dreamy

TWO #2 EMBRYOS

Sire: Braedale Goldwyn

Southwind Bell of Bar-Lee

1964484 Excellent-93 GM 2/98 *CV *TL *TD
PTA -596M +9F -1P 99R 4/09
TPA +.09T -.33UDC +.98FLC GTPI +948G

Farmdale Dakota Drew

14904159
7-02 2x 305d 27070 4.2 1131 3.1 831
8-03 2x 305d 24340 4.2 1031 3.3 793
5-11 2x 305d 22300 4.3 965 3.2 721
Life: 2104d 144040 4.2 6035 3.1 4517



WILSTAR GOLDWYN DAYTONA-ET
SELLS AS LOT 18

18

WILSTAR GOLDWYN DAYTONA-ET

64470355 *TR *TL *TD
Born: August 21, 2007

Bred: Dec. 26, 2008 to Picston Shottle-ET

Braedale Goldwyn

10705608 GP-CAN EXTRA'05 GM 8/08 *TV *TL
PTA +837M +74F +42P 99R 4/09
PTA +3.6PL 2.71SCS -2.3DPR
PTA +3.82T +3.51UDC +3.20FLC 99R 4/09
GTPI +2052M

Farmdale Integrity Dixie

120662388 Excellent-94 EEEVE 3E *RC
5-00 2x 365d 38220 4.1 1564 3.2 1230
7-05 2x 365d 28520 4.0 1142 3.3 935
3-06 2x 305d 22060 3.9 860 3.1 676
2-03 2x 305d 21730 3.8 824 3.2 700
Life: 2479d 179670 4.2 7489 3.5 6252

- Nom Jr All-American 5-Yr-Old 2002
- Junior All-Wisconsin Aged Cow 2003
- 3rd Aged Cow WI Championship Show 2003
- Embryos exported worldwide

Shoremar James

5902195C GP-81-CAN GM 2/04 *TV *TL
PTA -154M +24F +19P 99R 4/09
PTA +1.60T +1.64UDC +.82FLC GTPI +1292M

Braedale Baler Twine

6860888C VG-86-CAN *23 STAR *TL
2-01 2x 365d 30906 4.9 1521 3.4 1052
Life: 1672d 133470 4.3 5798 3.6 4815

Robthom Integrity-ET

2150948 Excellent-96 GM 2/99 *TV *TL
PTA +381M +4F -4P 99R 4/09
PTA +1.60T +1.44UDC +.12FLC GTPI +1067M

Farmdale South Dimple

120662333 Very Good-86
7-02 2x 343d 35350 3.9 1378 3.5 1238
4-05 2x 305d 27110 3.9 1052 3.4 913
5-08 2x 305d 24800 3.9 968 3.3 819

19

WILSTAR GOLDWYN DAISY-ET

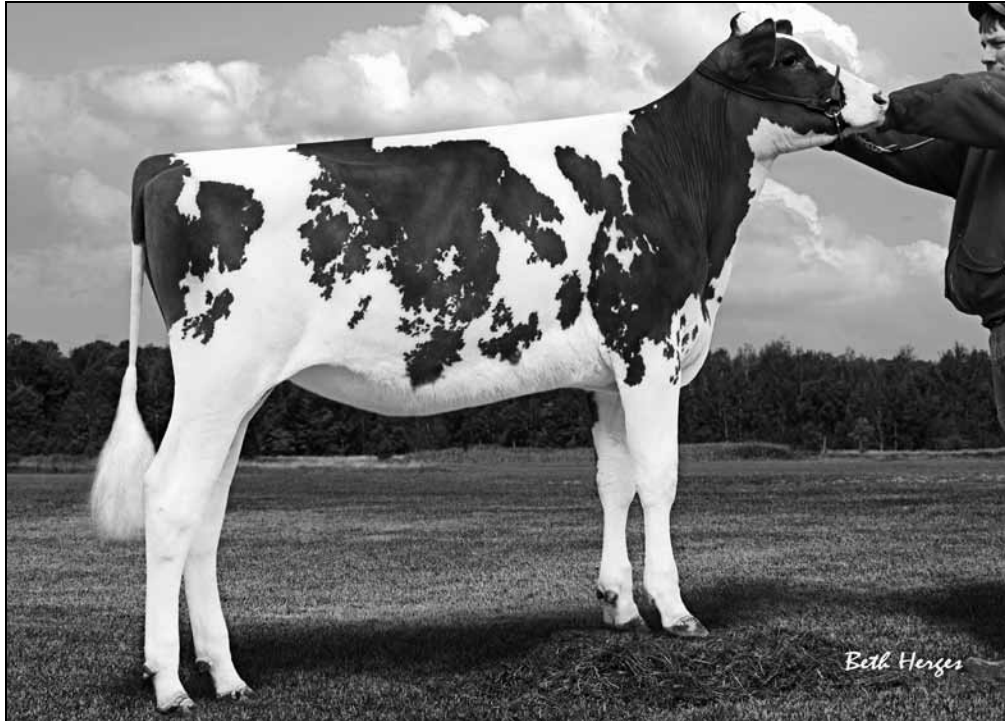
64470381 *RC *TL *TD
Born: March 4, 2008

Southwind Bell of Bar-Lee

1964484 Excellent-93 GM 2/98 *CV *TL *TD
PTA -596M +9F -1P 99R 4/09
TPA +.09T -.33UDC +.98FLC GTPI +948G

Farmdale Dakota Drew

14904159
7-02 2x 305d 27070 4.2 1131 3.1 831
8-03 2x 305d 24340 4.2 1031 3.3 793
5-11 2x 305d 22300 4.3 965 3.2 721
Life: 2104d 144040 4.2 6035 3.1 4517



WILSTAR ADIXE LADYDI-RED-ET
SELLS AS LOT 20

20

WILSTAR ADIXE LADYDI-RED-ET

64470399

Born: June 1, 2008

KHW Kite Advent-Red-ET

133002953 Excellent-94 *TV *TL *TD

PTA -851M -5F -17P 99R 4/09

PTA +1.9PL 3.04SCS +2.3DPR

PTA +3.39T +3.15UDC +2.21FLC 99R 4/09

GTPI +1477M

Farmdale Integrity Dixie

120662388 Excellent-94 EEEVE 3E *RC

5-00 2x 365d 38220 4.1 1564 3.2 1230

7-05 2x 365d 28520 4.0 1142 3.3 935

3-06 2x 305d 22060 3.9 860 3.1 676

2-03 2x 305d 21730 3.8 824 3.2 700

Life: 2479d 179670 4.2 7489 3.5 6252

- *Nom Jr All-American 5-Yr-Old 2002*
- *Junior All-Wisconsin Aged Cow 2003*
- *3rd Aged Cow WI Championship Show 2003*
- *Embryos exported worldwide*

Markwell Kite-ET

128460878 EX-CAN *RC *TV *TL

PTA -858M -12F -26P 99R 4/09

PTA +2.94T +2.02UDC +.34FLC GTPI +948M

Kamps-Hollow Altitude-ET

129136431 Excellent-95 EEEEE 2E DOM *RC *CV

7-00 2x 365d 39690 4.7 1849 3.5 1385

Life: 1844d 144460 4.4 6295 3.7 5288

Robthom Integrity-ET

2150948 Excellent-96 GM 2/99 *TV *TL

PTA +381M +4F -4P 99R 4/09

PTA +1.60T +1.44UDC +.12FLC GTPI +1067M

Farmdale South Dimple

120662333 Very Good-86

7-02 2x 343d 35350 3.9 1378 3.5 1238

4-05 2x 305d 27110 3.9 1052 3.4 913

5-08 2x 305d 24800 3.9 968 3.3 819

21

WILSTAR ADIXE DIANA-RED-ET

64470400

Born: June 2, 2008

Southwind Bell of Bar-Lee

1964484 Excellent-93 GM 2/98 *CV *TL *TD

PTA -596M +9F -1P 99R 4/09

TPA +.09T -.33UDC +.98FLC GTPI +948G

Farmdale Dakota Drew

14904159

7-02 2x 305d 27070 4.2 1131 3.1 831

8-03 2x 305d 24340 4.2 1031 3.3 793

5-11 2x 305d 22300 4.3 965 3.2 721

Life: 2104d 144040 4.2 6035 3.1 4517