



182

WILSTAR JASPER ENCHANT

64470412
Born: September 10, 2008

Wilcoxview Jasper-ET

128620869 VG-85-CAN ST'04 *TV *TL
PTA -432M +24F -12P 97R 4/09
PTA +1.6PL 3.05SCS -2.3DPR
PTA +3.59T +2.62UDC +1.38FLC 95R 4/09
GTPI +1398G

Wilstar-RS Drhm Essence-ET

62371091 Excellent-90 V EVVE *TR *CV *TL *TD
2-11 2x 234d 25106 3.5 887 3.0 749 RIP
1-11 2x 333d 23870 3.7 888 3.3 790
Sells as Lot 182

Comestar Lee-ET

5757117C EX-CAN GM 8/03 *TV *TL
PTA -145M +31F +5P 99R 4/09
PTA +1.97T +1.24UDC +1.57FLC GTPI +1375M

Wilcoxview Bellwood Jasmine

17290619 Very Good-87 VEVVV GMD DOM
1-11 2x 305d 23640 3.9 917 3. 731

Regancrest Elton Durham-ET

2250783 Excellent-90 GM 8/01 *TR *CV *TL
PTA +46M -23F +17P 99R 4/09
PTA +3.05T +3.08UDC +2.59FLC GTPI +1564M

Wilstar-RS Outside Eternity

134370398 Excellent-90 EEEEE 2E
5-02 2x 365d 40559 4.1 1670 3.0 1226
3-01 2x 365d 36030 3.8 1369 3.1 1123
2-02 2x 298d 26990 3.9 1055 3.2 863
Life: 1324d 123277 4.0 4893 3.2 3901 to date
Sells as Lot 180

3rd Dam

Budjon-JK Mason Ella-ETS VG-88 EX-MS GMD
5-01 2x 360d 37850 3.5 1337 3.2 1201
Life: 1265d 108860 3.4 3702 3.2 3521

4th Dam

Krull Broker Elegance EX-96 3E GMD DOM
5-07 2x 365d 40950 3.7 1522 3.3 1350
Life: 2356d 183710 3.7 6878 3.4 6267

- HM All-American Aged Cow 1999
- HM All-Canadian Mature Cow 1999
- Wisconsin Cow of Year 2002
- 1st Produce International Show 2001-02-03-04

5th Dam

Krull Starbuck Excellency EX-90 EEEEE GMD DOM
3-03 2x 365d 27140 3.5 937 3.4 930

6th Dam

Krull TT Excellency EX-90 VEEE DOM
3-02 2x 363d 24319 3.5 862 3.4 829
Life: 1733d 109780 3.7 4077 3.3 3605

7th Dam

Krull Boot Mark Excellency EX-92 2E GMD
6-06 2x 365d 27410 3.8 1040 3.1 868
Life: 3026d 201440 3.5 7105 3.0 4634

8th Dam

Krull Kingstead Excellency EX-92 4E GMD
12-4 2x 323d 21920 3.5 772
Life: 3364d 179790 3.6 6436

183

WILSTAR HOLSTEINS & TROY OPSAL

WILSTAR-RS DRHM ETERNAL-ET

62371090 Very Good-86 VG-MS *TR *TV *TL *TD
Born: September 21, 2005
2-00 2x 365d 26470 3.7 970 3.2 850
3-06 2x 39d 3502 4.5 158 3.4 120 RIP

Fresh: March 24, 2009

Emprise Bell Elton

1912270 Excellent-95 *CV *BL
PTA +262M +12F +17P 99R 4/09
PTA -.18T -.37UDC +1.75FLC GTPI +1121G

Snow-N Denises Dellia

12895802 Excellent-95 2E GMD DOM *TV *TL
6-00 2x 365d 35230 4.0 1425 3.0 1049
Life: 2558d 180240 3.9 7108 3.2 5723

Comestar Outside-ET

6026421C EX-CAN GM 1/08 *TV *TL
PTA +567M +43F +4P 99R 4/09
PTA +2.02T +1.73UDC +2.18FLC GTPI +1650M

Budjon-JK Mason Ella-ETS

121326296 Very Good-88 EX-MS GMD
5-01 2x 360d 37850 3.5 1337 3.2 1201
3-07 2x 365d 35850 3.2 1145 3.2 1148
2-03 2x 365d 24260 3.5 861 3.2 774
Life: 1265d 108860 3.4 3702 3.2 3521

Regancrest Elton Durham-ET

2250783 Excellent-90 GM 8/01 *TR *CV *TL
PTA +46M -23F +17P 99R 4/09
PTA +1.3PL 2.88SCS +0.6DPR
PTA +3.05T +3.08UDC +2.59FLC 99R 4/09
GTPI +1564M

Wilstar-RS Outside Eternity

134370398 Excellent-90 EEEEE 2E
5-02 2x 365d 40559 4.1 1670 3.0 1226
3-01 2x 365d 36030 3.8 1369 3.1 1123
2-02 2x 298d 26990 3.9 1055 3.2 863
Life: 1324d 123277 4.0 4893 3.2 3901 to date
Sells as Lot 180

183 1/2

WILSTAR TS EXTREME

66731638 • Born: March 24, 2009
Sire: Jenny-Lou Mrshl Toystory-ET

3rd Dam

Krull Broker Elegance EX-96 3E GMD DOM
5-07 2x 365d 40950 3.7 1522 3.3 1350
Life: 2356d 183710 3.7 6878 3.4 6267

- HM All-American Aged Cow 1999
- HM All-Canadian Mature Cow 1999
- 1st Produce International Show 2001-02-03-04

4th Dam

Krull Starbuck Excellency EX-90 EEEEE GMD DOM
3-03 2x 365d 27140 3.5 937 3.4 930

5th Dam

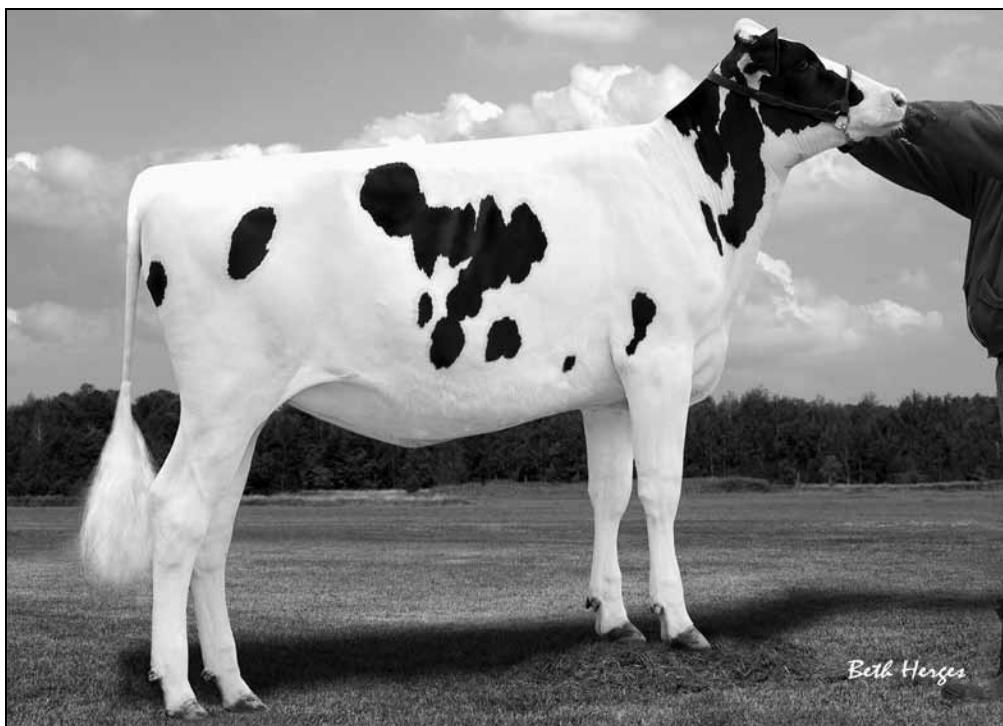
Krull TT Excellency EX-90 VEEE DOM
3-02 2x 363d 24319 3.5 862 3.4 829
Life: 1733d 109780 3.7 4077 3.3 3605

6th Dam

Krull Boot Mark Excellency EX-92 2E GMD
6-06 2x 365d 27410 3.8 1040 3.1 868
Life: 3026d 201440 3.5 7105 3.0 4634

7th Dam

Krull Kingstead Excellency EX-92 4E GMD
12-4 2x 323d 21920 3.5 772
Life: 3364d 179790 3.6 6436



WILSTAR MICH ECLIPSE
SELLS AS LOT 184

184

WILSTAR MICH ECLIPSE

64470393
Born: April 10, 2008

Michael Storm Avalanche

122596522 Excellent-93 GM 8/06 *TV *TL
PTA +137M +60F +2P 99R 4/09
PTA -0.9PL 2.71SCS -2.3DPR
PTA +2.87T +3.13UDC +2.65FLC 99R 4/09
GTPI +1526G

Wilstar-RS Outside Eternity

134370398 Excellent-90 EEEEEV 2E
5-02 2x 365d 40559 4.1 1670 3.0 1226
3-01 2x 365d 36030 3.8 1369 3.1 1123
2-02 2x 298d 26990 3.9 1055 3.2 863
Life: 1324d 123277 4.0 4893 3.2 3901 to date
Sells as Lot 180

Maughlin Storm-ET

5457798 EX-CAN GM 8/04 *B/R *TV *TL
PTA +192M +36F +6P 99R 4/09
PTA +1.91T +1.60UDC +2.04FLC TPI +1424M

Michael Mandel Antique

15892789 Very Good-88 VG-MS GMD DOM
2-00 2x 359d 31830 3.7 1175 3.1 981
4-09 2x 305d 29370 4.0 1161

Comestar Outside-ET

6026421C EX-CAN GM 1/08 *TV *TL
PTA +567M +43F +4P 99R 4/09
PTA +2.02T +1.73UDC +2.18FLC GTPI +1650M

Budjon-JK Mason Ella-ETS

121326296 Very Good-88 EX-MS GMD
5-01 2x 360d 37850 3.5 1337 3.2 1201
3-07 2x 365d 35850 3.2 1145 3.2 1148
2-03 2x 365d 24260 3.5 861 3.2 774
Life: 1265d 108860 3.4 3702 3.2 3521

3rd Dam

Krull Broker Elegance EX-96 3E GMD DOM

5-07 2x 365d 40950 3.7 1522 3.3 1350
Life: 2356d 183710 3.7 6878 3.4 6267

- HM All-American Aged Cow 1999
- HM All-Canadian Mature Cow 1999
- 1st 125,000 Lb Cow International Show 2000
- Wisconsin Cow of Year 2002
- 1st Produce International Show 2001-02-03-04

4th Dam

Krull Starbuck Excellency EX-90 EEEEEV GMD DOM

3-03 2x 365d 27140 3.5 937 3.4 930

5th Dam

Krull TT Excellency EX-90 VEEE DOM

3-02 2x 363d 24319 3.5 862 3.4 829
Life: 1733d 109780 3.7 4077 3.3 3605

6th Dam

Krull Boot Mark Excellency EX-92 2E GMD

6-06 2x 365d 27410 3.8 1040 3.1 868
Life: 3026d 201440 3.5 7105 3.0 4634

7th Dam

Krull Kingstead Excellency EX-92 4E GMD

12-4 2x 323d 21920 3.5 772
Life: 3364d 179790 3.6 6436



2ND-LOOK DURHAM JUBA 3433-ET EX-95 2E GMD
DAM OF LOTS 187, 188, 189, 190 & 192

185

KEVIN JORGENSEN

Braedale Goldwyn

10705608 GP-CAN EXTRA'05 GM 8/08 *TV *TL
PTA +837M +74F +42P 99R 4/09
PTA +3.6PL 2.71SCS -2.3DPR
PTA +3.82T +3.51UDC +3.20FLC 99R 4/09
GTPI +2052M

Ke-Jo Outside Jubilee-ET

134808187 Very Good-88 VEEVV @ 4-03
2-00 2x 365d 30760 3.4 1059 3.1 948

KE-JO GOLDWYN JUBILANT

62496900 Good Plus-82 @ 2-05 *TR *TV *TL *TD
Born: December 15, 2005
CTPI +1739 PTA +3.16T 4/09
2-02 2x 365d 27319 3.8 1038 3.3 914"

Bred: Oct. 19, 2008 to Robthom Moscow-ET

Shoremar James

5902195C GP-81-CAN GM 2/04 *TV *TL
PTA -154M +24F +19P 99R 4/09
PTA +1.60T +1.64UDC +.82FLC GTPI +1292M

Braedale Baler Twine

6860888C VG-86-CAN *23 STAR *TL
2-01 2x 365d 30906 4.9 1521 3.4 1052
Life: 1672d 133470 4.3 5798 3.6 4815

Comestar Outside-ET

6026421C EX-CAN GM 1/08 *TV *TL
PTA +567M +43F +4P 99R 4/09
PTA +2.02T +1.73UDC +2.18FLC GTPI +1650M

2nd-Look Durhm Juba 3433-ET

60216959 Excellent-95 EEEEE 2E GMD *CV
7-04 2x 365d 47400 3.7 1734 3.0 1408
3-09 2x 365d 40820 3.1 1276 3.1 1252
4-11 2x 365d 39420 3.6 1404 3.2 1270
Life: 2174d 215231 3.5 7504 3.2 6818 to date
• All-Wisconsin 125,000 Lb. Cow 2008
• Res Grand Champion WI District 7 Show 2008
Sells as Lot 194

4th Dam

Jo-Har Bova Joy VG-87

7-08 2x 352d 27130 3.7 1011 3.1 834
Life: 2337d 161540 3.6 5890 3.2 5110

5th Dam

Jo-Har Glendell Janette VG-86 VG-MS GMD DOM

8-08 2x 365d 29280 4.0 1173 3.0 886
Life: 2678d 167310 3.8 6421 3.1 4198

6th Dam

Jo-Har Reflect Janet VG-85 VG-MS DOM

6-11 2x 365d 25460 4.0 1013 3.1 800
Life: 2393d 129960 3.9 5092

7th Dam

Plentyrock Starlite Jean VG-85

6-03 2x 305d 20900 4.1 867
Life: 2124d 116800 3.8 4490

Regancrest Elton Durham-ET

2250783 Excellent-90 GM 8/01 *TR *CV *TL
PTA +46M -23F +17P 99R 4/09
PTA +3.05T +3.08UDC +2.59FLC GTPI +1564M

Jo-Har Mark Joyful

13576914 Very Good-87 VG-MS GMD DOM
6-01 3x 365d 30310 3.5 1053 3.2 983
7-06 3x 306d 28340 3.6 1019 3.3 942
1-10 2x 365d 28000 3.8 1059 3.2 885
Life: 2075d 157234 3.7 5778 3.3 5125