

**WILSTAR TS JUSTINE**  
SELLS AS LOT 193

# 193

## 193A TWO #1 EMBRYOS

Sire: Picston Shottle-ET

### Jenny-Lou Mrshl Toystory-ET

60372887 \*TR \*TV \*TL  
PTA +1588M +62F +50P 99R 4/09  
PTA +1.1PL 2.92SCS -0.3DPR  
PTA +3.23T +3.22UDC +2.46FLC 97R 4/09  
GTPI +1944G

### 2nd-Look Durhm Juba 3433-ET

60216959 Excellent-95 EEEEE 2E GMD \*CV  
7-04 2x 365d 47400 3.7 1734 3.0 1408  
3-09 2x 365d 40820 3.1 1276 3.1 1252  
4-11 2x 365d 39420 3.6 1404 3.2 1270  
Life: 2174d 215231 3.5 7504 3.2 6818 to date  
• All-Wisconsin 125,000 Lb. Cow 2008  
• Res Grand Champion WI District 7 Show 2008  
• Res Grand Champion WI District 7 Show 2005  
• 3rd 4-Yr-Old Cow WI District 7 Show 2004  
Sells as Lot 194

## WILSTAR TS JUSTINE

64470369  
Born: November 3, 2007 • Donor Dam  
P9 PTPI +1759

Bred: April 11, 2009 to Gen-Mark Sromatic Sanchez

### Mara-Thon BW Marshall-ET

2290977 Very Good-86 GM 8/07 \*TV \*TL  
PTA +1654M +34F +38P 99R 4/09  
PTA +2.27T +2.16UDC +2.87FLC GTPI +1570M

### Jenny-Lou Patron Toyane

17313307 Very Good-89 VEEEV GMD DOM  
4-05 3x 365d 45826 3.8 1749 3.1 1419  
Life: 1704d 160053 4.0 6329 3.2 5073

### Regancrest Elton Durham-ET

2250783 Excellent-90 GM 8/01 \*TR \*CV \*TL  
PTA +46M -23F +17P 99R 4/09  
PTA +3.05T +3.08UDC +2.59FLC GTPI +1564M

### Jo-Har Mark Joyful

13576914 Very Good-87 VG-MS GMD DOM  
6-01 3x 365d 30310 3.5 1053 3.2 983  
7-06 3x 306d 28340 3.6 1019 3.3 942  
1-10 2x 365d 28000 3.8 1059 3.2 885  
3-03 2x 365d 27020 3.7 991 3.1 844  
Life: 2075d 157234 3.7 5778 3.3 5125

- Res Calf Champion WI State Jr Fair 2008
- 1st Fall Calf WI State Fair Open Show 2008
- 2nd Fall Calf WI District 7 Show 2008
- 1st B&O Fall Calf WI District 7 Show 2008

#### 4th Dam

**Jo-Har Glendell Janette** VG-86 VG-MS GMD DOM  
8-08 2x 365d 29280 4.0 1173 3.0 886  
Life: 2678d 167310 3.8 6421 3.1 4198

#### 5th Dam

**Jo-Har Reflect Janet** VG-85 VG-MS DOM  
6-11 2x 365d 25460 4.0 1013 3.1 800  
Life: 2393d 129960 3.9 5092

#### 6th Dam

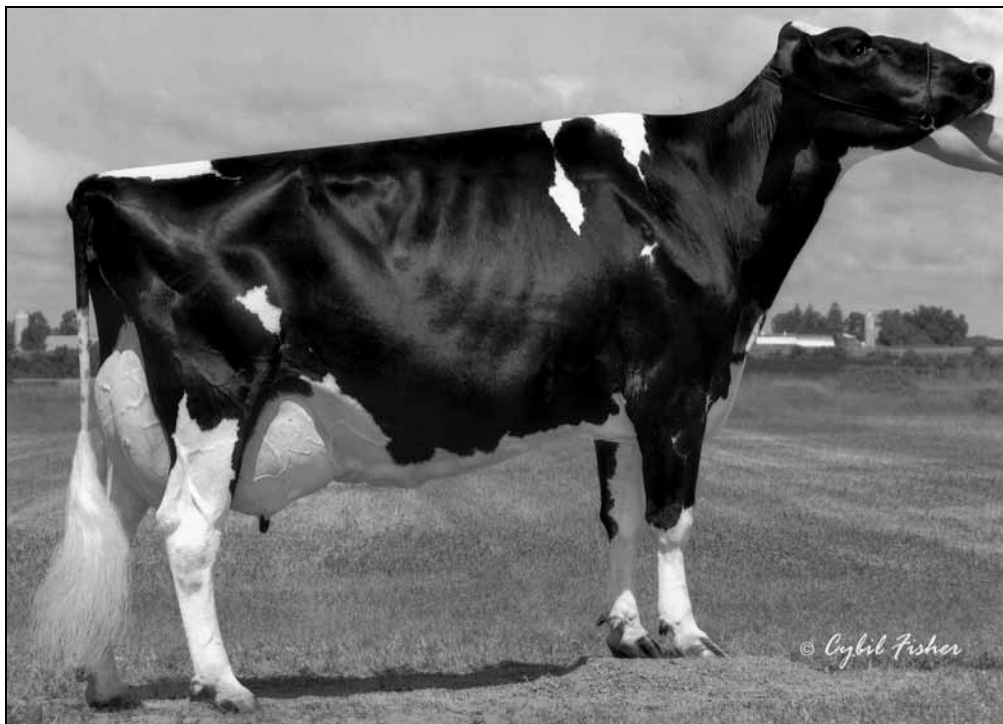
**Plentyrock Starlite Jean** VG-85  
6-03 2x 305d 20900 4.1 867  
Life: 2124d 116800 3.8 4490

### Walkway Chief Mark

1773417 Very Good-87 GM 7/96 \*TL \*TD  
PTA -228M +6F -13P 99R 4/09  
PTA +.37T +.54UDC -2.39FLC GTPI +950G

### Jo-Har Bova Joy

11349022 Very Good-87  
7-08 2x 352d 27130 3.7 1011 3.1 834  
6-06 2x 352d 25640 3.8 974 3.2 821  
5-07 2x 306d 22820 3.7 842 3.2 739  
Life: 2337d 161540 3.6 5890 3.2 5110



2ND-LOOK DURHAM JUBA 3433-ET EX-95 2E GMD  
SELLS AS LOT 194

# 194

WILSTAR, KE-JO HOLSTEINS & MYSTIC-VALLEY

**194A THREE #1 EMBRYOS**  
Sire: Gen-Mark Stmatic Sanchez

**Regancrest Elton Durham-ET**

2250783 Excellent-90 GM 8/01 \*TR \*CV \*TL  
PTA +46M -23F +17P 99R 4/09  
PTA +1.3PL 2.88SCS +0.6DPR  
PTA +3.05T +3.08UDC +2.59FLC 99R 4/09  
GTPI +1564M

**Jo-Har Mark Joyful**

13576914 Very Good-87 VG-MS GMD DOM  
6-01 3x 365d 30310 3.5 1053 3.2 983  
7-06 3x 306d 28340 3.6 1019 3.3 942  
1-10 2x 365d 28000 3.8 1059 3.2 885  
3-03 2x 365d 27020 3.7 991 3.1 844  
5-01 2x 300d 27064 3.3 901 3.1 829  
Life: 2075d 157234 3.7 5778 3.3 5125

**2ND-LOOK DURHM JUBA 3433-ET**

60216959 Excellent-95 EEEEE 2E GMD \*CV  
Born: June 16, 2000 • Donor Dam  
7-04 2x 365d 47400 3.7 1734 3.0 1408  
3-09 2x 365d 40820 3.1 1276 3.1 1252  
4-11 2x 365d 39420 3.6 1404 3.2 1270  
1-11 2x 365d 30490 3.2 969 3.1 937  
Life: 2174d 215231 3.5 7504 3.2 6818 to date

**Emprise Bell Elton**

1912270 Excellent-95 \*CV \*BL GTPI +1121G

**Snow-N Denises Dellia**

12895802 Excellent-95 2E GMD DOM \*TV \*TL  
6-00 2x 365d 35230 4.0 1425 3.0 1049  
Life: 2558d 180240 3.9 7108 3.2 5723

**Walkway Chief Mark**

1773417 Very Good-87 GM 7/96 \*TL \*TD  
PTA -228M +6F -13P 99R 4/09  
PTA +.37T +.54UDC -2.39FLC GTPI +950G

**Jo-Har Bova Joy**

11349022 Very Good-87  
7-08 2x 352d 27130 3.7 1011 3.1 834  
6-06 2x 352d 25640 3.8 974 3.2 821  
5-07 2x 306d 22820 3.7 842 3.2 739  
Life: 2337d 161540 3.6 5890 3.2 5110

- All-Wisconsin 125,000 Lb. Cow 2008
- Res Grand Champion WI District 7 Show 2008
- 1st Aged Cow & BU WI District 7 Show 2008
- Res Grand Champion WI District 7 Show 2005
- 1st 5-Yr-Old & BU Cow WI District 7 Show 2005
- 3rd 4-Yr-Old Cow WI District 7 Show 2004

*4th Dam*

**Jo-Har Reflect Janet VG-85 VG-MS DOM**

6-11 2x 365d 25460 4.0 1013 3.1 800  
Life: 2393d 129960 3.9 5092

*5th Dam*

**Plentyrock Starlite Jean VG-85**

6-03 2x 305d 20900 4.1 867  
Life: 2124d 116800 3.8 4490

**Rockalli Son of Bova-ET**

1665634 Very Good-88 GM 7/90 \*TL  
PTA +172M -26F -32P 99R 4/09  
PTA -.80T -.52UDC +1.22FLC GTPI +819G

**Jo-Har Glendell Janette**

10272382 Very Good-86 VG-MS GMD DOM  
8-08 2x 365d 29280 4.0 1173 3.0 886  
6-05 2x 365d 24480 4.0 903 3.0 695  
9-10 2x 325d 24370 3.8 914 3.1 745  
5-03 2x 333d 21090 3.9 829 3.0 634  
Life: 2678d 167310 3.8 6421 3.1 4198