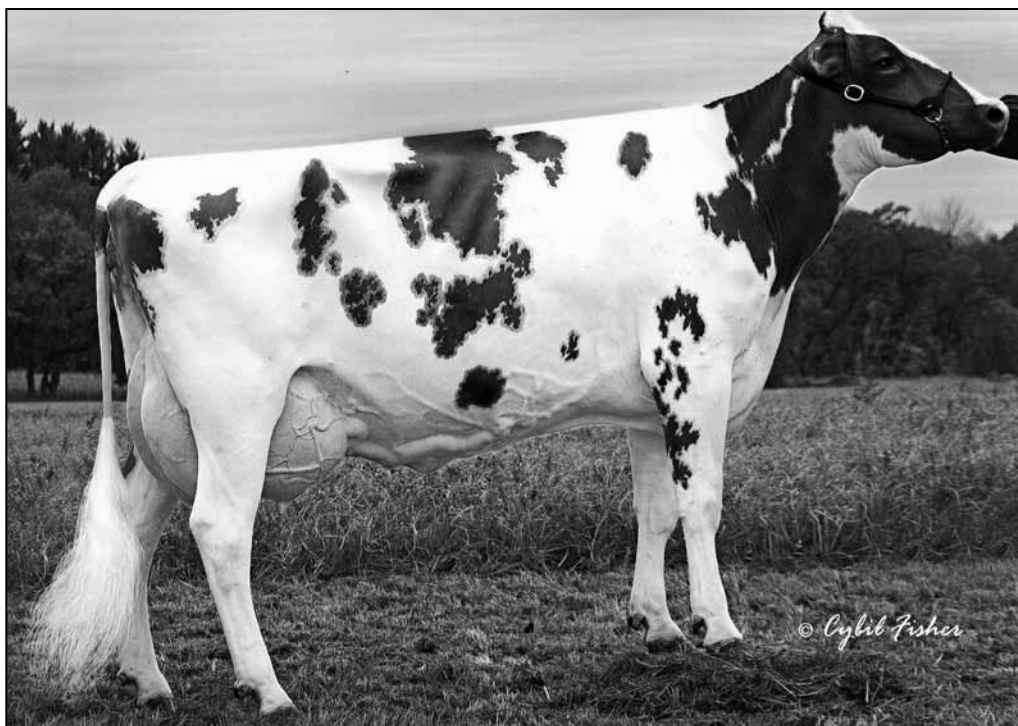




**WILSTAR-RS LDR ANGEL-RED-ET EX-91 2E GMD  
DAM OF LOT 24**



**DREAMSTREET ENHANCER ALICIA EX-94 3E GMD DOM \*RC  
MATRIARCH OF LOTS 24-49**



WILSTAR MAR ALLSTAR-RED-ET EX-90 2E  
SELLS AS LOT 24

# 24

### Glen Drummond Mario-ET

6468545C EX-CAN \*RC \*TV \*TL  
PTA +104M +22F +4P 97R 4/09  
PTA +4.5PL 2.91SCS +1.5DPR  
PTA +1.34T +.88UDC +1.10FLC 94R 4/09  
GTPI +1466G

### Wilstar-RS Ldr Angel-Red-ET

17030731 Excellent-91 EEEVE 2E GMD  
4-07 2x 365d 36810 4.4 1613 3.1 1152  
3-05 2x 355d 31180 3.8 1197 3.1 977  
2-02 2x 365d 26290 3.4 882 3.3 876  
Life: 1326d 106070 3.9 4168 3.2 3415  
• Sons in AI & Embryos exported

### WILSTAR MAR ALLSTAR-RED-ET

133517343 Excellent-90 EVVEV 2E  
Born: September 5, 2002 • Donor Dam  
5-05 2x 365d 36780 4.5 1688 3.3 1224  
3-05 2x 365d 35140 4.5 1590 3.2 1138  
2-05 2x 311d 23360 4.2 973 3.3 772  
• Embryos exported

### Townson Lindy-ET

382748C EX-CAN GM 2/99 \*TV \*TL  
PTA -414M -2F +1P 99R 4/09  
PTA +.90T +.91UDC +.44FLC GTPI +1072G

### Glen Drummond Aero Flower

5333217C VG-88 VVEV-CAN \*18 STAR  
2-03 2x 326d 25622 4.0 1032 3.4 882

### Kinglea Leader

1926780 Very Good-87 GM 7/96 \*RC \*TV \*TL  
PTA +89M -28F +4P 99R 4/09  
PTA -.13T +.47UDC -.55FLC GTPI +920G

### Dreamstreet Enhancer Alicia

13438257 Excellent-94 EEEEE 3E GMD DOM \*RC  
8-05 2x 365d 36370 4.9 1773 2.9 1069  
6-02 2x 365d 30450 4.5 1379 3.1 935  
10-6 2x 365d 32240 4.4 1410 3.1 999  
4-08 2x 365d 26410 4.4 1149 3.2 832  
Life: 3559d 224670 4.4 9974 3.1 7072  
• Dam of eight Excellent daughters

### 24A FIVE #1 EMBRYOS

Sire: Scientific Debonair-Red-ETS

### 24B FIVE #1 EMBRYOS

Sire: Scientific Debonair-Red-ETS

### 24C THREE #1 EMBRYOS

Sire: Debonair, Deuce & Shottle

### 24D FOUR #1 & ONE #2 EMBRYOS

Sire: KHW Kite Advent-Red-ET

### 3rd Dam

#### Dreamstreet Triple Ali-Red-ET EX-90 EVEE

5-02 2x 365d 24380 3.9 962 3.4 841

### 4th Dam

#### Cha-Liz R Maple B Ann EX-91 EEEE 2E

7-10 2x 365d 23290 3.9 909  
Life: 2190d 109421 3.8 4208

### 5th Dam

#### Cha-Liz F Mini Ann B EX-92 3E

7-09 2x 305d 19080 3.7 712  
Life: 2122d 108160 4.1 4422

### 6th Dam

#### Cha-Liz P V Ann Adeu B EX-92 VEEE 2E

10-0 2x 347d 23760 4.0 962  
Life: 3200d 196887 3.7 7371

### 7th Dam

#### Wenron Adeu Ann Champion B EX-91 3E GMD

7-02 2x 305d 23948 3.6 868  
Life: 3600d 196626 3.7 7187



**WILSTAR DEUCE AUTUMN-RED-ET**  
SELLS AS LOT 25

# 24 1/2

## WILSTAR DEUCE ALEXI-ET \*RC

66731637 • Born: March 20, 2009

### Scientific SS Deuce-ET

135781957 Very Good-86 \*RC \*TV \*TL  
PTA +326M +10F +17P 92R 4/09  
PTA +3.0PL 2.91SCS +0.4DPR  
PTA +3.09T +3.21UDC +3.62FLC 82R 4/09  
GTPI +1726G

### Wilstar Mar Allstar-Red-ET

133517343 Excellent-90 EVVEV 2E  
5-05 2x 365d 36780 4.5 1688 3.3 1224  
3-05 2x 365d 35140 4.5 1590 3.2 1138  
2-05 2x 311d 23360 4.2 973 3.3 772

*Sells as Lot 24*

# 25

## WILSTAR DEUCE AUTUMN-RED-ET

64410469 • Born: December 5, 2007

Bred: April 16, 2009 to KHW Kite Advent-Red-ET  
• 1st & B&O Winter Calf WI District 7 Show - 2008

### Pursuit September Storm-ET

6820564C EX-CAN GM 2/07 \*RC \*TV \*TL  
PTA +222M +50F +1P 99R 4/09  
PTA +2.89T +2.41UDC +3.63FLC GTPI +1542M

### Scientific Debutante Rae-ET

132416603 Excellent-92 EEEEE \*RC \*CV  
2-02 2x 365d 32930 4.4 1440 3.4 1132  
• All-American 4-Yr-Old Cow 2005

### Glen Drummond Mario-ET

6468545C EX-CAN \*RC \*TV \*TL  
PTA +104M +22F +4P 97R 4/09  
PTA +1.34T +.88UDC +1.10FLC GTPI +1466G

### Wilstar-RS Ldr Angel-Red-ET

17030731 Excellent-91 EEEVE 2E GMD  
4-07 2x 365d 36810 4.4 1613 3.1 1152  
3-05 2x 355d 31180 3.8 1197 3.1 977  
2-02 2x 365d 26290 3.4 882 3.3 876  
Life: 1326d 106070 3.9 4168 3.2 3415

• Sons in AI & Embryos exported

# 26

## WILSTAR DEUCE ALASKA-RED-ET

64470362 Born: September 15, 2007

Bred: Jan. 2, 2009 to Ladino Park Talent-Imp-ET

### 3rd Dam

**Dreamstreet Enhancer Alicia** EX-94 3E GMD DOM  
8-05 2x 365d 36370 4.9 1773 2.9 1069  
Life: 3559d 224670 4.4 9974 3.1 7072

### 4th thru 8th Dams

**Dreamstreet Triple Ali-Red-ET** EX-90 EEEE

5-02 2x 365d 24380 3.9 962 3.4 841

**Cha-Liz R Maple B Ann** EX-91 EEEE 2E

7-10 2x 365d 23290 3.9 909

Life: 2190d 109421 3.8 4208

**Cha-Liz F Mini Ann B** EX-92 3E

7-09 2x 305d 19080 3.7 712

Life: 2122d 108160 4.1 4422

**Cha-Liz P V Ann Adeu B** EX-92 VEEE 2E

10-0 2x 347d 23760 4.0 962

Life: 3200d 196887 3.7 7371

**Wenron Adeu Ann Champion B** EX-91 3E GMD

7-02 2x 305d 23948 3.6 868

Life: 3600d 196626 3.7 7187