



**WILSTAR-RS DURHAM ATTITUDE EX-90 VEVVE**  
DAM OF LOTS 48 & 49

# 48

## WILSTAR-RS FINLEY ATHENA

61655707 Very Good-87 EVVVV @ 4-06  
Born: April 15, 2004  
4-00 2x 347d 30731 3.7 1146 3.1 959  
2-11 2x 348d 25290 4.0 1013 3.4 857

Carries embryo implanted Sept. 7, 2008  
Debonair-Red x Wilstar Mar Allstar-Red (Lot 24)

### Shen-Val NV LM Formation-ET

2163822 Very Good-85 GM 2/01 \*TV \*TL  
PTA +870M -16F +9P 99R 4/09  
PTA +1.24T +1.81UDC +.47FLC GTPI +1306M

### De-Su Opsal Ethan Fiona-ET

15788871 Excellent-90 EEEVV GMD DOM \*CV \*BL  
3-07 2x 365d 39670 3.9 1543 3.4 1346  
Life: 1304d 112120 3.8 4290 3.5 3892

### Regancrest Elton Durham-ET

2250783 Excellent-90 GM 8/01 \*TR \*CV \*TL  
PTA +46M -23F +17P 99R 4/09  
PTA +3.05T +3.08UDC +2.59FLC GTPI +1564M

### Wilstar-RS Encore Allie-ET

126365944 Excellent-91 VEEVE  
3-03 2x 339d 31169 3.8 1186 3.1 966"  
4-03 2x 246d 26410 4.3 1127 3.2 846  
2-03 2x 344d 25470 4.2 1074 3.3 835

- Res Int Champion WI District 10 Show 2002
- 1st Sr 3 Yr Old Cow WI District 10 Show 2002

### Opsal Finley-ET

120780521 GM 1/08 \*TV \*TL  
PTA +1069M +12F +30P 99R 4/09  
PTA +0.9PL 3.00SCS +0.9DPR  
PTA +2.38T +2.16UDC +.41FLC 99R 4/09  
GTPI +1566M

### Wilstar-RS Durham Attitude

132504144 Excellent-90 VEVVE @ 3-05  
2-03 2x 328d 27300 4.5 1219 3.5 952

- 2nd Winter Yrlg WI District 7 Show 2003
- 1st B&O Winter Yrlg WI District 7 Show 2003
- 3rd Sr 2-Yr-Old WI District 7 Show 2004

#### 3rd Dam

**Dreamstreet Enhancer Alicia** EX-94 3E GMD DOM  
8-05 2x 365d 36370 4.9 1773 2.9 1069  
Life: 3559d 224670 4.4 9974 3.1 7072

#### 4th Dam

**Dreamstreet Triple Ali-Red-ET** EX-90 EVEE  
5-02 2x 365d 24380 3.9 962 3.4 841

#### 5th Dam

**Cha-Liz R Maple B Ann** EX-91 EEEE 2E  
7-10 2x 365d 23290 3.9 909  
Life: 2190d 109421 3.8 4208

#### 6th Dam

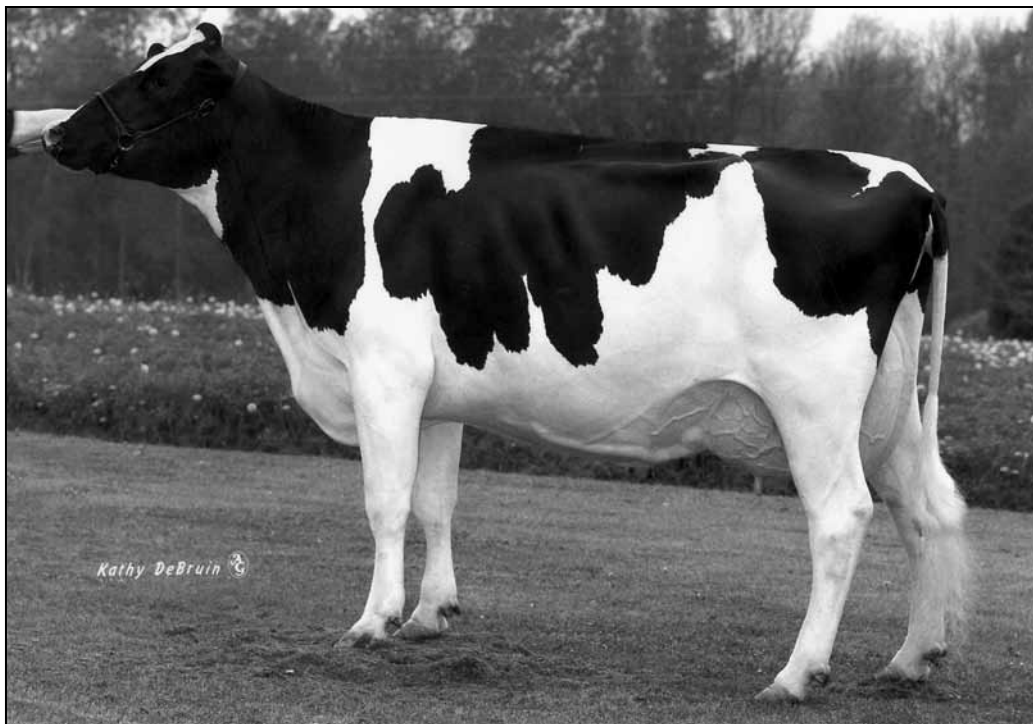
**Cha-Liz F Mini Ann B** EX-92 3E  
7-09 2x 305d 19080 3.7 712  
Life: 2122d 108160 4.1 4422

#### 7th Dam

**Cha-Liz P V Ann Adeu B** EX-92 VEEE 2E  
10-0 2x 347d 23760 4.0 962  
Life: 3200d 196887 3.7 7371

#### 8th Dam

**Wenron Adeu Ann Champion B** EX-91 3E GMD  
7-02 2x 305d 23948 3.6 868  
Life: 3600d 196626 3.7 7187



**WILSTAR-RS ENCORE ALLIE-ET EX-91 VEEVE**  
2ND DAM OF LOTS 48 & 49

# 49

### STBVQ Rubens-ET

5844883C VG-CAN GM 8/04 \*RC \*TV \*TL  
PTA -211M -7F +12P 99R 4/09  
PTA +1.1PL 2.96SCS -1.1DPR  
PTA +2.17T +2.79UDC +.82FLC 99R 4/09  
GTPI +1393M

### Wilstar-RS Durham Attitude

132504144 Excellent-90 VEEVE @ 3-05  
2-03 2x 328d 27300 4.5 1219 3.5 952  
• 2nd Winter Yrlg Heifer WI District 7 Show 2003  
• 1st B&O Winter Yrlg WI District 7 Show 2003  
• 3rd Sr 2-Yr-Old Cow WI District 7 Show 2004

### WILSTAR-RS RUBENS ALLIE

62371061 Very Good-85 VG-MS @ 3-10 \*TR \*TV \*TL \*TD  
Born: April 17, 2005  
2-03 2x 365d 28340 3.7 1048 3.6 1007  
3-06 2x 152d 16240 3.7 607 3.2 526 RIP

Carries embryo implanted April 1, 2009  
Den-K Marshall LL Laurin x Wilstar-RS Mark Kandy

### Duregal Astre Starbuck-ET

392405C EX-CAN EXTRA'92 \*TL  
PTA -209M -44F -15P 99R 4/09  
PTA +1.15T +1.14UDC +.94FLC TPI +951M

### Hanoverhill Star Royal-ET

43235412C VG-86-3YR-CAN \*4 STAR  
3-00 2x 350d 21718 3.8 836 3.6 787  
2-00 2x 315d 19592 3.6 710 3.5 686

### Regancrest Elton Durham-ET

2250783 Excellent-90 GM 8/01 \*TR \*CV \*TL  
PTA +46M -23F +17P 99R 4/09  
PTA +3.05T +3.08UDC +2.59FLC GTPI +1564M

### Wilstar-RS Encore Allie-ET

126365944 Excellent-91 VEEVE  
3-03 2x 339d 31169 3.8 1186 3.1 966"  
4-03 2x 246d 26410 4.3 1127 3.2 846  
2-03 2x 344d 25470 4.2 1074 3.3 835  
• Res Int Champion WI District 10 Show 2002  
• 1st Sr 3 Yr Old Cow WI District 10 Show 2002

### 3rd Dam

**Dreamstreet Enhancer Alicia** EX-94 3E GMD DOM  
8-05 2x 365d 36370 4.9 1773 2.9 1069  
Life: 3559d 224670 4.4 9974 3.1 7072

### 4th Dam

**Dreamstreet Triple Ali-Red-ET** EX-90 EVEE  
5-02 2x 365d 24380 3.9 962 3.4 841

### 5th Dam

**Cha-Liz R Maple B Ann** EX-91 EEEE 2E  
7-10 2x 365d 23290 3.9 909  
Life: 2190d 109421 3.8 4208

### 6th Dam

**Cha-Liz F Mini Ann B** EX-92 3E  
7-09 2x 305d 19080 3.7 712  
Life: 2122d 108160 4.1 4422

### 7th Dam

**Cha-Liz P V Ann Adeu B** EX-92 VEEE 2E  
10-0 2x 347d 23760 4.0 962  
Life: 3200d 196887 3.7 7371

### 8th Dam

**Wenron Adeu Ann Champion B** EX-91 3E GMD  
7-02 2x 305d 23948 3.6 868  
Life: 3600d 196626 3.7 7187



**MS WILSTAR-RS MARK KANDY EX-95 3E**  
SELLS AS LOT 50



**SUNNY-MAPLE KATHY LINCOLN EX-92 4E**  
DAM OF LOT 50

# 50

## 50A SIX #1 EMBRYOS

Sire: Den-K Marshall LL Laurin

### Walkway Chief Mark

1773417 Very Good-87 GM 7/96 \*TL \*TD  
PTA -228M +6F -13P 99R 4/09  
PTA -0.1PL 2.72SCS -2.2DPR  
PTA +.37T +.54UDC -2.39FLC 99R 4/09  
GTPI +950G

### Sunny Maple Kathy Lincoln

5528634C Excellent-92 EEEEE 4E  
8-06 2x 365d 27300 4.6 1253 3.2 874  
10-11 2x 365d 25320 4.4 1109 3.2 813  
5-10 2x 365d 25620 4.3 1092 3.2 828  
4-06 2x 364d 25210 3.5 878 3.3 822  
Life: 2947d 179095 4.0 7221 3.3 5923

- Res All-Iowa Aged Cow 2000
- Res Sr Champion WI Championship 2000
- Res All Wisconsin Aged Cow 2000
- All-Wisconsin Dam & Offspring 2000
- All-Wisconsin Dry Aged Cow 1998

## MS WILSTAR-RS MARK KANDY

122393914 Excellent-95 EEEVE 3E  
Born: June 18, 1997 • Donor Dam  
10-5 2x 365d 47080 3.9 1845 3.1 1456  
6-07 2x 365d 40624 4.1 1670 3.3 1348  
4-07 2x 365d 40146 3.4 1369 3.2 1284  
8-02 2x 365d 38690 3.9 1500 3.2 1251  
2-11 2x 365d 31710 3.6 1144 3.4 1083  
1-11 2x 297d 20410 3.3 670 3.2 655  
Life: 3302d 301279 4.0 11916 3.5 10450 to date

Embryos sell with Kandy

- One #2 Laurin Embryo
- One #1 Sanchez Embryo

### Hanoverhill Lincoln-ET

384785C EX-CAN EXTRA'90 \*TL  
PTA -865M +25F -10P 99R 4/09  
PTA -.25T -.20UDC -.54FLC TPI +1202

### Sunny Maple Kelly Tab

4676440C EX-CAN-2E  
7-04 2x 324d 28347 3.5 981 3.1 884  
8-05 2x 337d 28428 2.7 754 3.0 853  
9-09 2x 326d 27403 3.3 915 3.0 813  
11-3 2x 365d 26971 3.2 851 3.1 847  
5-03 2x 310d 19916 3.6 710 3.1 626  
Life: 9 Lact 189324 3.2 6080 3.1 5933

- 1st & BU 125,000 Lb Cow WI District 7 Show 2008
- 1st B&O 125,000 Lb Cow WI District 7 Show 2008
- Res All-Wisconsin 125,000 Lb Cow 2006
- Res All-Wisconsin & BU 125,000 Lb. Cow 2004
- 1st & BU 125,000 Lb Cow WI District 7 Show 2004
- Champion B&O Cow WI District 7 Show 2004 & 2008
- 1st B&O Aged Cow WI District 7 Show 2003

4th Dam

### Sunny Maple Kim Ultimate EX-CAN

6-03 2x 311d 17494 4.2 730 3.2 556

5th Dam

### Armstone Katy Sheik VG-86

7-01 2x 365d 22932 4.0 924 3.3 752  
Life: 7 Lacs 136738 4.2 5701 3.3 2143

### Kingstead Valiant Tab

369275C EX-CAN EXTRA'91 \*TL  
PTA -865M -32F -32P 99R 4/09  
PTA +.21T +.96UDC +.10FLC TPI +1117

### Sunny Maple Katy Warden

4157741C VG-86-CAN  
5-06 2x 365d 27068 3.7 996 3.2 864  
6-09 2x 365d 26881 3.6 979 3.0 805  
Life: 7 Lacs 171672 3.7 6270 3.1 5271

- Nom All-Canadian Jr Heifer Calf 1986
- HM All-Canadian 4-H Calf 1986