



**OPSAI SS DAPPLE-RED-ET**  
SELLS AS LOT 70



**DUCHESS SS DESIRE-RED VG-87 VG-MS**  
FULL SISTER TO LOT 70

# 70

SARBACKER, WILSTAR, OPSAL & JORGENSEN

## OPSAI SS DAPPLE-RED-ET

63470291  
Born: August 3, 2006 • Donor Dam  
2-06 2x 66d 5645 3.8 210 2.7 147 RIP

Fresh: February 25, 2009

*Full sister to Dapple*

## Duchess SS Desire-Red VG-87 VG-MS

2-04 2x 365d 29840 4.3 1245 3.2 963  
• Nom All-American R&W Sr 2-Yr-Old Cow 2007  
• 4th Sr 2-Yr-Old Cow Grand International 2007  
• Int Champion Midwest Spring R&W Show 2007

## Pursuit September Storm-ET

6820564C EX-CAN GM 2/07 \*RC \*TV \*TL  
PTA +222M +50F +1P 99R 4/09  
PTA +0.0PL 2.91SCS -1.4DPR  
PTA +2.89T +2.41UDC +3.63FLC 99R 4/09  
GTPI +1542M

## Opsal Wilstar R Duchess-ET

131711808 Very Good-88 EX-MS \*RC  
3-10 2x 365d 35560 3.6 1290 3.1 1119  
2-00 2x 365d 32150 3.3 1052 3.3 1061

*Full sister to Dulcinea*

## Opsal Wilstar Ruben Dori-ET EX-94 GMD

5-10 2x 365d 42961 4.0 1705 2.8 1185

## Maughlin Storm-ET

5457798 EX-CAN GM 8/04 \*B/R \*TV \*TL  
PTA +192M +36F +6P 99R 4/09  
PTA +1.91T +1.60UDC +2.04FLC GTPI +1424M

## Glen Drummond Shimmer

6185591C VG-85-2YR-CAN \*4 STAR  
3-10 2x 365d 32608 4.2 1376 3.2 1036  
Life: 3 Lact 121844 4.3 5229 3.4 4107

## STBVQ Rubens-ET

5844883C VG-CAN GM 8/04 \*RC \*TV \*TL  
PTA -211M -7F +12P 99R 4/09  
PTA +2.17T +2.79UDC +.82FLC GTPI +1393M

## Miss Wilstar Lindy Dessy-ET

15728917 Excellent-91 EEEEE 3E GMD DOM  
6-09 2x 365d 42990 3.9 1691 3.2 1362  
3-11 2x 365d 41930 3.5 1483 3.2 1339  
2-01 2x 365d 27590 3.7 1009 3.2 895  
Life: 1502d 133390 3.7 4921 3.3 4336

• Sons in AI & Embryos exported

*4th Dam*

## Snow-N Denises Dellia EX-95 2E GMD DOM

7-06 2x 365d 35610 4.0 1431 3.1 1103  
Life: 2558d 180240 3.9 7108 3.4 6065

*5th Dam*

## Snow-N Dorys Denise EX-90 2E GMD DOM

5-09 2x 365d 33350 3.8 1256 3.1 1038  
Life: 1604d 114010 3.6 4153 3.2 3649

## Townson Lindy-ET

382748C EX-CAN GM 2/99 \*TV \*TL  
PTA -414M -2F +1P 99R 4/09  
PTA +.90T +.91UDC +.44FLC GTPI +1072G

## Regancrest Melwood Dinah-ET

15040297 Very Good-86 VG-MS DOM  
2-02 2x 365d 23930 4.2 1013 3.5 844

• Embryos exported worldwide



**DUCHESS ADVENT DELANEY-ET EX-90 VVVEE**  
SELLS AS LOT 71



**DUCHESS ADVENT DIVINE-RED VG-87 EX-MS**  
FULL SISTER TO LOT 71

# 71

## **DUCHESS ADVENT DELANEY-ET**

62371069 Excellent-90 VVVEE @ 3-04 \*RC  
Born: June 6, 2005 • Donor Dam  
3-02 2x 259d 26710 4.7 1265 3.0 797 RIP  
1-11 2x 365d 24260 3.8 913 3.3 801

*Full sister to Delaney*

**Duchess Advnt Divine-Red-ET VG-87 EX-MS**  
2-03 2x 342d 30442 4.7 1421 3.1 935

- Nom All-American R&W Sr 2-Yr-Old Cow 2007
- 3rd Sr 2-Yr-Old Cow Grand International 2007
- Int Champion MN State Fair R&W Show 2007
- Topped 2008 Wisconsin Nationals

### **KHW Kite Advent-Red-ET**

133002953 Excellent-94 \*TV \*TL \*TD  
PTA -851M -5F -17P 99R 4/09  
PTA +1.9PL 3.04SCS +2.3DPR  
PTA +3.39T +3.15UDC +2.21FLC 99R 4/09  
GTPI +1477M

### **Opsal Wilstar R Duchess-ET**

131711808 Very Good-88 EX-MS \*RC  
3-10 2x 365d 35560 3.6 1290 3.1 1119  
2-00 2x 365d 32150 3.3 1052 3.3 1061

*Full sister to Dulcinea*

### **Opsal Wilstar Ruben Dori-ET EX-94 GMD**

5-10 2x 365d 42961 4.0 1705 2.8 1185

### **Markwell Kite-ET**

128460878 EX-CAN \*RC \*TV \*TL  
PTA -858M -12F -26P 99R 4/09  
PTA +2.94T +2.02UDC +.34FLC GTPI +948M

### **Kamps-Hollow Altitude-ET**

129136431 Excellent-95 EEEEE 2E DOM \*RC \*CV  
7-00 2x 365d 39690 4.7 1849 3.5 1385  
Life: 1844d 144460 4.4 6295 3.7 5288

### **STBVQ Rubens-ET**

5844883C VG-CAN GM 8/04 \*RC \*TV \*TL  
PTA -211M -7F +12P 99R 4/09  
PTA +2.17T +2.79UDC +.82FLC GTPI +1393M

### **Miss Wilstar Lindy Dessy-ET**

15728917 Excellent-91 EEEEV 3E GMD DOM  
6-09 2x 365d 42990 3.9 1691 3.2 1362  
3-11 2x 365d 41930 3.5 1483 3.2 1339  
2-01 2x 365d 27590 3.7 1009 3.2 895  
Life: 1502d 133390 3.7 4921 3.3 4336

*See Lot 70 for extended pedigree*

### **71A SIX #1 EMBRYOS**

Sire: Dudoc Mr Burns

### **71B THREE #1 & ONE #2 EMBRYOS**

Sire: Aggravation Lawn Boy P-Red

### **71C SIX #1 EMBRYOS**

Sire: Ra-Mar-Land Lion King

### **71D SIX #1 EMBRYOS**

Sire: Ra-Mar-Land Lion King

### **71E FIVE #1 & ONE #2 EMBRYOS**

Sire: Ra-Mar-Land Lion King

### **71F FOUR #1 EMBRYOS**

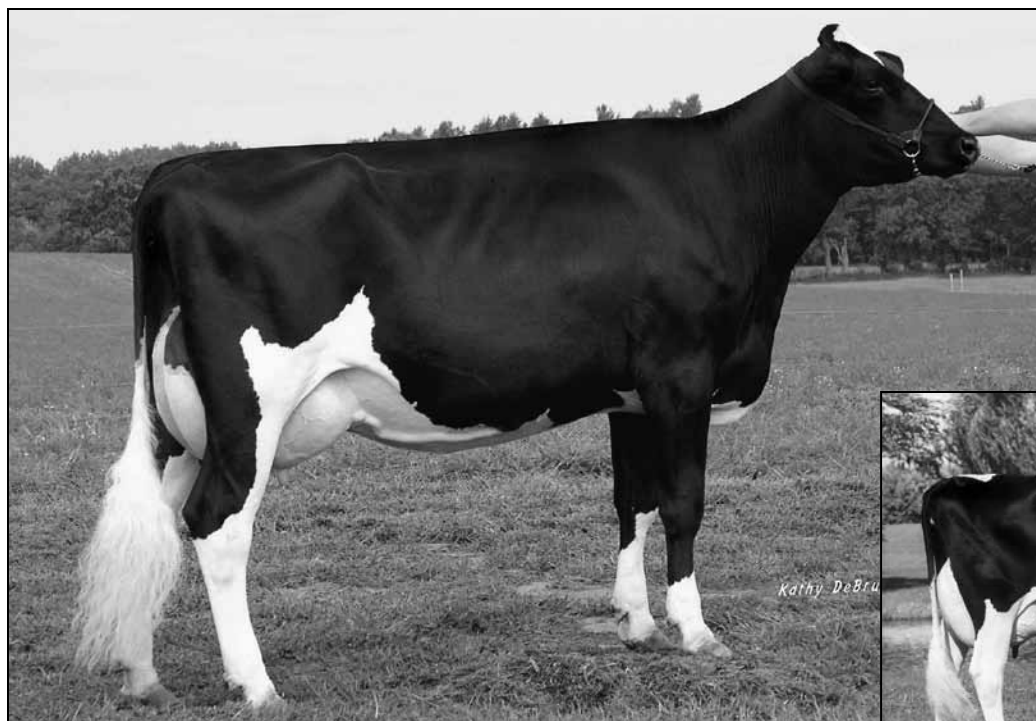
Sire: Picston Shottle-ET

### **71G FOUR #1 EMBRYOS**

Sire: Picston Shottle-ET

### **71H FOUR #1 & ONE #2 EMBRYOS**

Sire: Picston Shottle-ET



**OPSAI WILSTAR R DUCHESS-ET VG-88 EX-MS \*RC**  
DAM OF LOT 70 & 71



**SNOW-N DENISES DELLIA EX-95 2E GMD DOM**  
3RD DAM OF LOT 65 & 4TH DAM OF LOTS 66 THRU 71

# 72

## WILSTAR SS DOMINIQUE

64470338 \*TR \*TL \*TD  
Born: May 30, 2007

Bred: Nov. 10, 2008 to Picston Shottle-ET

### Maughlin Storm-ET

5457798 EX-CAN GM 8/04 \*B/R \*TV \*TL  
PTA +192M +36F +6P 99R 4/09  
PTA +1.91T +1.60UDC +2.04FLC GTPI +1424M

### Glen Drummond Shimmer

6185591C VG-85-2YR-CAN \*4 STAR  
3-10 2x 365d 32608 4.2 1376 3.2 1036  
Life: 3 Lact 121844 4.3 5229 3.4 4107

### KHW Kite Advent-Red-ET

133002953 Excellent-94 \*TV \*TL \*TD  
PTA -851M -5F -17P 99R 4/09  
PTA +3.39T +3.15UDC +2.21FLC GTPI +1477M

### Opsal Wilstar R Duchess-ET

131711808 Very Good-88 EX-MS \*RC  
3-10 2x 365d 35560 3.6 1290 3.1 1119  
2-00 2x 365d 32150 3.3 1052 3.3 1061  
*Full sister to Dulcinea*

**Opsal Wilstar Ruben Dori-ET** EX-94 GMD  
5-10 2x 365d 42961 4.0 1705 2.8 1185

### Pursuit September Storm-ET

6820564C EX-CAN GM 2/07 \*RC \*TV \*TL  
PTA +222M +50F +1P 99R 4/09  
PTA +0.0PL 2.91SCS -1.4DPR  
PTA +2.89T +2.41UDC +3.63FLC 99R 4/09  
GTPI +1542M

### Duchess Advent Delaney-ET

62371069 Excellent-90 VVVEE @ 3-04 \*RC  
3-02 2x 259d 26710 4.7 1265 3.0 797 RIP  
1-11 2x 365d 24260 3.8 913 3.3 801  
• Sons in AI

### 4th Dam

**Regancrest Melwood Dinah-ET** VG-86 DOM  
2-02 2x 365d 23930 4.2 1013 3.5 844  
• Embryos exported worldwide

### 5th Dam

**Snow-N Denises Dellia** EX-95 2E GMD DOM  
7-06 2x 365d 35610 4.0 1431 3.1 1103  
Life: 2558d 180240 3.9 7108 3.4 6065

### 6th Dam

**Snow-N Dorys Denise** EX-90 2E GMD DOM  
5-09 2x 365d 33350 3.8 1256 3.1 1038  
Life: 1604d 114010 3.6 4153 3.2 3649

### STBVQ Rubens-ET

5844883C VG-CAN GM 8/04 \*RC \*TV \*TL  
PTA -211M -7F +12P 99R 4/09  
PTA +2.17T +2.79UDC +.82FLC GTPI +1393M

### Miss Wilstar Lindy Dessy-ET

15728917 Excellent-91 EEEEE 3E GMD DOM  
6-09 2x 365d 42990 3.9 1691 3.2 1362  
3-11 2x 365d 41930 3.5 1483 3.2 1339  
2-01 2x 365d 27590 3.7 1009 3.2 895  
Life: 1502d 133390 3.7 4921 3.3 4336

• Sons in AI & Embryos exported