

**GOLDFAWN SIR RENITA-RED EX-93 2E**  
SELLS AS LOT 73

- Nominated All-American R&W '04, '05, '06, '08
- 3rd 125,000 Lb. Cow Grand International 2008
- 3rd 4-Yr-Old Cow Grand International 2006
- 3rd Sr 3-Yr-Old Cow Grand International 2005
- 4th Sr 2-Yr-Old Cow Grand International 2004

# 73

ABBI LEA GOLDENBERG

## GOLDFAWN SIR RENITA-RED

132917832 Excellent-93 EEEEE 2E  
Born: December 26, 2001  
6-03 2x 365d 50770 4.3 2164 3.1 1594"  
4-05 2x 365d 40830 3.7 1523 3.2 1314  
3-05 2x 308d 27670 3.3 924 3.0 825  
2-01 2x 365d 20660 3.2 652 3.3 687

Bred: April 11, 2009 to Hurtgen-Vue Reality-Red

### STBVQ Rubens-ET

5844883C VG-CAN GM 8/04 \*RC GTPI +1393M

### Tri-Sec-HD Starlit-Red-ET

15379469 Excellent-90 EEEVV  
8-05 2x 365d 28950 3.5 1011 2.8 801  
Life: 2292d 170980 3.4 5850 2.9 4990

### Bar-Lee Ms Mischief-Red-ET

2277208  
PTA -1206M -5F -17P 87R 4/09  
PTA +.91T -.14UDC +.78FLC GTPI +908G

### Stelbro Renita Ranger-Red

6019019C Excellent-94 EEEEE 3E  
7-04 2x 365d 29760 3.9 1168 3.1 924  
4-02 2x 305d 29259 3.9 1155 3.1 917  
• All-American R&W Aged Cow 2001  
• Grand Champ Grand National 2001, 1998  
• Unanimous All-American R&W 4-Yr Cow 1998  
• All-American R&W Sr 2-Yr-Old Cow 1996  
• All-American R&W Winter Yrlg 1995

### B-Brook Sir-Red

124953635  
PTA -181M -31F -6P 44R 4/09  
PTA +0.9PL 3.06SCS -1.0DPR  
PTA +1.15T +1.53UDC +1.26FLC 43R 4/09  
PTPI +1092M

### Carrousel Mis Rita-Red-ET

128891269 Excellent-91 EEEVV  
4-06 2x 365d 32180 3.4 1097 3.1 1008  
2-03 2x 339d 21740 3.2 692 3.1 664

Maternal sister to Rita

### Carrousel RM Rolanda-ET EX-94 EEEEE \*RC

6-02 2x 365d 61510 3.7 2294 2.6 1587

### 73A SIX #1 EMBRYOS

Sire: Scientific Debonair-Red-ETS

### 73B FIVE #1 EMBRYOS

Sire: Scientific Debonair-Red-ETS

### 73C FIVE #1 EMBRYOS

Sire: Hurtgen-Vue Reality-Red

### 73D FOUR #1 EMBRYOS

Sire: Hurtgen-Vue Reality-Red

### 73E SEVEN #2 EMBRYOS

Sire: Hurtgen-Vue Reality-Red

3rd Dam

### Stelbro Enhancer Ripple-Red EX-4E \*7 STAR

9-05 2x 365d 31552 4.5 1413 3.2 1008  
Life: 6 Lact 202164 4.5 9112 3.4 6867

4th Dam

### Stelbro Regal Rene EX-3E-CAN \*3 STAR

8-09 2x 364d 21874 4.1 893 3.7 805  
Life: 7 Lact 134725 3.9 5190 3.4 4619

5th Dam

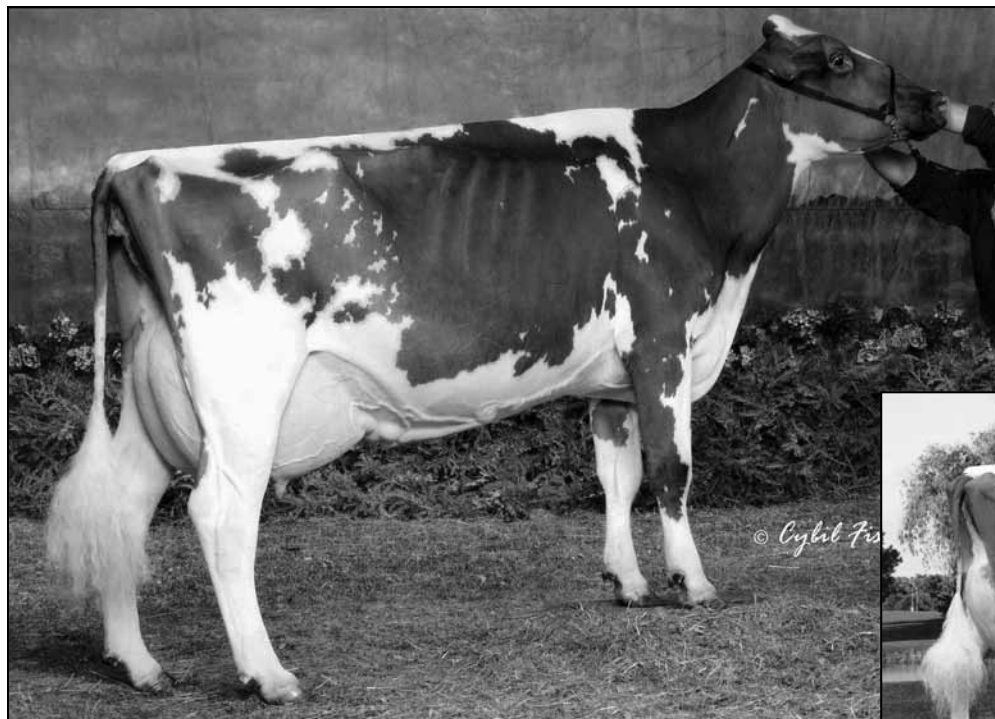
### Stelbro Astra Starbrite VG-85-CAN

6-06 2x 295d 18210 3.8 699 3.5 631

6th Dam

### Langstate Star VG-85-CAN

4-03 2x 292d 17996 4.3 778



CARROUSEL MIS RITA-RED-ET EX-91 EEEVV  
DAM OF LOT 73



STELBRO RENITA RANGER-RED EX-94 3E  
2ND DAM OF LOT 73

# 74

ABBI LEA GOLDENBERG

## GOLDFAWN ADV RITZY-RED-ET

64470351 • Born: August 14, 2007

Bred: Nov. 10, 2008 to Scientific Debonair-Red-ETS

### KHW Kite Advent-Red-ET

133002953 Excellent-94 \*TV \*TL \*TD

PTA -851M -5F -17P 99R 4/09

PTA +1.9PL 3.04SCS +2.3DPR

PTA +3.39T +3.15UDC +2.21FLC 99R 4/09

GTPI +1477M

### Goldfawn Sir Renita-Red

132917832 Excellent-93 EEEEE 2E

6-03 2x 365d 50770 4.3 2164 3.1 1594"

4-05 2x 365d 40830 3.7 1523 3.2 1314

3-05 2x 308d 27670 3.3 924 3.0 825

2-01 2x 365d 20660 3.2 652 3.3 687

Sells as Lot 73

### Markwell Kite-ET

128460878 EX-CAN \*RC \*TV \*TL

PTA -858M -12F -26P 99R 4/09

PTA +2.94T +2.02UDC +.34FLC GTPI +948M

### Kamps-Hollow Altitude-ET

129136431 Excellent-95 EEEEE 2E DOM \*RC \*CV

7-00 2x 365d 39690 4.7 1849 3.5 1385

Life: 1844d 144460 4.4 6295 3.7 5288

### B-Brook Sir-Red

124953635

PTA -181M -31F -6P 44R 4/09

PTA +1.15T +1.53UDC +1.26FLC PTPI +1092M

### Carrousel Mis Rita-Red-ET

128891269 Excellent-91 EEEVV

4-06 2x 365d 32180 3.4 1097 3.1 1008

2-03 2x 339d 21740 3.2 692 3.1 664

Maternal sister to Rita

### Carrousel RM Rolanda-ET EX-94 EEEEE \*RC

6-02 2x 365d 61510 3.7 2294 2.6 1587

# 75

## GOLDFAWN ADV REBEL-RED-ET

64470354 • Born: August 17, 2007

Bred: Nov. 25, 2008 to Scientific Debonair-Red-ETS

### 3rd Dam

#### Stelbro Renita Ranger-Red EX-94 EEEEE 3E

7-04 2x 365d 29760 3.9 1168 3.1 924

• All-American R&W Aged Cow 2001

• Unanimous All-American R&W 4-Yr Cow 1998

### 4th Dam

#### Stelbro Enhancer Ripple-Red EX-4E \*7 STAR

9-05 2x 365d 31552 4.5 1413 3.2 1008

Life: 6 Lact 202164 4.5 9112 3.4 6867

### 5th Dam

#### Stelbro Regal Rene EX-3E-CAN \*3 STAR

8-09 2x 364d 21874 4.1 893 3.7 805

Life: 7 Lact 134725 3.9 5190 3.4 4619

### 6th Dam

#### Stelbro Astra Starbrite VG-85-CAN

6-06 2x 295d 18210 3.8 699 3.5 631

### 7th Dam

#### Langstate Star VG-85-CAN

4-03 2x 292d 17996 4.3 778



**GOLDFAWN TALENT RELISH-RED**  
SELLS AS LOT 76

**76**

ABBI LEA GOLDENBERG

**GOLDFAWN TALENT RELISH-RED**

64470384  
Born: March 26, 2008

**Ladino Park Talent-Imp-ET**

AUS 930377 Excellent-90 ST'03 \*RC \*TV \*TL  
PTA +209M -14F +18P 99R 4/09  
PTA +4.0PL 3.15SCS -1.8DPR  
PTA +2.90T +3.23UDC +1.62FLC 99R 4/09  
GTPI +1518M

**Goldfawn Sir Renita-Red**

132917832 Excellent-93 EEEEE 2E  
6-03 2x 365d 50770 4.3 2164 3.1 1594"  
4-05 2x 365d 40830 3.7 1523 3.2 1314  
3-05 2x 308d 27670 3.3 924 3.0 825  
2-01 2x 365d 20660 3.2 652 3.3 687  
Sells as Lot 73

**Maughlin Storm-ET**

5457798 EX-CAN GM 8/04 \*B/R \*TV \*TL  
PTA +192M +36F +6P 99R 4/09  
PTA +1.91T +1.60UDC +2.04FLC GTPI +1424M

**Markwell Leader Rose-ET**

15804313 EX-91 EEEVE 2E \*RC  
2-11 2x 365d 30490 4.2 1287 3.4 1045

**B-Brook Sir-Red**

124953635  
PTA -181M -31F -6P 44R 4/09  
PTA +1.15T +1.53UDC +1.26FLC PTPI +1092M

**Carrousel Mis Rita-Red-ET**

128891269 Excellent-91 EEEVV  
4-06 2x 365d 32180 3.4 1097 3.1 1008  
2-03 2x 339d 21740 3.2 692 3.1 664

Maternal sister to Rita

**Carrousel RM Rolanda-ET EX-94 EEEEE \*RC**

6-02 2x 365d 61510 3.7 2294 2.6 1587

*4th Dam*

**Stelbro Enhancer Ripple-Red EX-4E \*7 STAR**

9-05 2x 365d 31552 4.5 1413 3.2 1008  
Life: 6 Lact 202164 4.5 9112 3.4 6867

*5th Dam*

**Stelbro Regal Rene EX-3E-CAN \*3 STAR**

8-09 2x 364d 21874 4.1 893 3.7 805  
Life: 7 Lact 134725 3.9 5190 3.4 4619

*6th Dam*

**Stelbro Astra Starbrite VG-85-CAN**

6-06 2x 295d 18210 3.8 699 3.5 631

*7th Dam*

**Langstate Star VG-85-CAN**

4-03 2x 292d 17996 4.3 778

**Bar-Lee Ms Mischief-Red-ET**

2277208  
PTA -1206M -5F -17P 87R 4/09  
PTA +.91T -.14UDC +.78FLC GTPI +908G

**Stelbro Renita Ranger-Red**

6019019C Excellent-94 EEEEE 3E  
7-04 2x 365d 29760 3.9 1168 3.1 924  
4-02 2x 305d 29259 3.9 1155 3.1 917

- All-American R&W Aged Cow 2001
- Grand Champ Grand National 2001, 1998
- Unanimous All-American R&W 4-Yr Cow 1998
- All-American R&W Sr 2-Yr-Old Cow 1996