



GOLDEN-OAKS PERK RAE-RED-ET EX-90 EEVEE
DAM OF LOT 89



SCIENTIFIC BEAUTY RAE-ET EX-90 DOM *RC
2ND DAM OF LOT 89



C HANOVERHILL TONY RAE EX-96 3E GMD DOM
4TH DAM OF LOT 89

89

WILSTAR HOLSTEINS & KE-JO HOLSTEINS

KHW Kite Advent-Red-ET

133002953 Excellent-94 *TV *TL *TD
PTA -851M -5F -17P 99R 4/09
PTA +1.9PL 3.04SCS +2.3DPR
PTA +3.39T +3.15UDC +2.21FLC 99R 4/09
GTPI +1477M

Golden-Oaks Perk Rae-Red-ET

61690384 Excellent-90 EEVEE *PC
1-11 3x 365d 31030 3.7 1161 3.4 1041
4-07 2x 247d 22519 3.6 811 3.2 720 RIP

GOLDEN-OAKS AD PERKY-RED-ET

63375656
Born: November 26, 2006 • Donor Dam

Bred: Sept. 4, 2008 to Scientific Debonair-Red-ETS

• Embryos exported

Markwell Kite-ET

128460878 EX-CAN *RC *TV *TL
PTA -858M -12F -26P 99R 4/09
PTA +2.94T +2.02UDC +.34FLC GTPI +948M

Kamps-Hollow Altitude-ET

129136431 Excellent-95 EEEEE 2E DOM *RC *CV
7-00 2x 365d 39690 4.7 1849 3.5 1385
Life: 1844d 144460 4.4 6295 3.7 5288

Burket-Falls Perk-Red-ET

130043010 *PC
PTA -744M -6F +7P 93R 4/09
PTA +.65T +.98UDC +.74FLC TPI +1163

Scientific Beauty Rae-ET

129659965 Excellent-90 VEEVV *RC DOM
4-03 2x 365d 33710 4.7 1595 3.7 1243
2-00 2x 365d 26640 4.6 1238 3.6 958

Maternal sister to Beauty Rae

Scientific Debutant Rae EX-92 EEEEE

• All-American 4-Yr-Old Cow 2005

3rd Dam

Scientific Jubilant Rae-ET EX-90 EEEVV DOM
5-11 3x 365d 38880 4.1 1607 3.6 1402
Life: 4 Lact 117589 4.0 4707 3.6 4242

4th Dam

C Hanoverhill Tony Rae EX-96 3E GMD DOM 5*
6-11 3x 365d 40220 4.1 1661 3.3 1331
Life: 2247d 166396 4.1 6904 3.4 5612

5th Dam

C Hanoverhill TT Roxette-ET EX-94 2E GMD
10-0 3x 365d 35040 4.3 1518 3.0 1063
Life: 2104d 164789 4.1 6760 3.1 3587

6th Dam

Mil-R-Mor Roxette EX-90 EEEV GMD DOM 30*
7-01 2x 365d 24530 4.7 1153
Life: 2150d 121417 4.7 5725

7th Dam

C Glenridge Citation Roxy EX-97 4E GMD 6*
10-1 2x 365d 25280 4.2 1061
Life: 3620d 209784 4.5 9471

"Queen of the Breed"

8th & 9th Dams

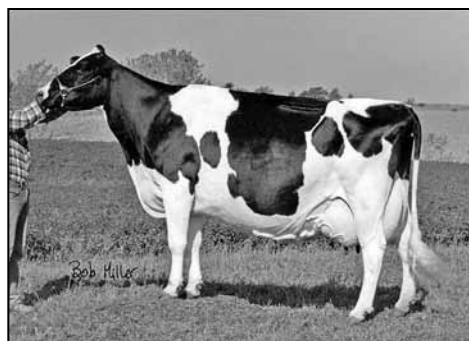
C Norton Court Model Vee EX-90 6*
7-09 2x 357d 20362 3.9 793
Life: 4183d 218629 3.9 8581

• All-American Produce of Dam 1977 - 1979

Norton Court Reflection Val VG-85 *5 STAR
8-11 2x 332d 20631 3.7 765
Life: 14 Lact 249583 3.7 9295



HANOVER-HILL-R DUST ROXY-ET EX-91
DAM OF LOT 90



C GLENRIDGE CITATION ROXY EX-97 4E GMD
5TH DAM OF LOT 90



HASS-ACRES SEPT ROXETTE-ET EX-91 EX-MS
SELLS AS LOT 90

90

Pursuit September Storm-ET

6820564C EX-CAN GM 2/07 *RC *TV *TL
PTA +222M +50F +1P 99R 4/09
PTA +0.0PL 2.91SCS -1.4DPR
PTA +2.89T +2.41UDC +3.63FLC 99R 4/09
GTPI +1542M

Hanover-Hill-R Dust Roxy-ET

17159475 Excellent-91 EEEEE *B/R
4-05 2x 365d 36410 3.6 1296 3.2 1180
3-04 2x 365d 28150 3.9 1090 3.6 1017
• Embryos exported

HASS-ACRES SEPT ROXETTE-ET

60880923 Excellent-91 EX-MS @ 3-07
Born: March 12, 2005 • Donor Dam
2-11 2x 365d 33451 3.7 1243 3.2 1084
1-11 2x 313d 19130 4.2 810 3.3 627

Bred: Oct. 1, 2008 to KHW Kite Advent-Red-ET

Maughlin Storm-ET

5457798 EX-CAN GM 8/04 *B/R *TV *TL
PTA +192M +36F +6P 99R 4/09
PTA +1.91T +1.60UDC +2.04FLC GTPI +1424M

Glen Drummond Shimmer

6185591C VG-85-2YR-CAN *4 STAR
3-10 2x 365d 32608 4.2 1376 3.2 1036
Life: 3 Lact 121844 4.3 5229 3.4 4107

Pen-Col Duster-ET

2147486 Very Good-89 *TV *TL *TD
PTA +635M -16F +23P 99R 1/09
PTA +.34T +.35UDC +.14FLC GTPI +1453M

Hanover-Hill-R Roxy Rae-ET

14214552 Excellent-91 VEEEE
4-05 3x 365d 30720 4.0 1221 3.4 1042
9-01 2x 365d 30260 4.2 1266 3.3 1006
3-03 3x 365d 29650 4.0 1195 3.5 1023
2-01 3x 365d 20550 4.3 886 3.3 669
Life: 1685d 120610 4.1 4979 3.4 4094

4th Dam

Mil-R-Mor Roxette EX-90 GMD DOM *30 Star
7-01 2x 365d 24530 4.7 1153
Life: 2150d 121417 4.7 5725

5th Dam

C Glenridge Citation Roxy EX-97 EEEE 4E GMD 6*
10-1 2x 365d 25280 4.2 1061
Life: 3620d 209784 4.5 9471

• Two-Time Queen of the Breed

6th Dam

C Norton Court Model Vee EX-90 6*
Life: 4183d 218629 3.9 8581

• All-American Produce of Dam 1977, '78, '79

7th Dam

Norton Court Reflection Val VG-CAN *5 Star
Life: 14 Lacs 249583 3.7 9295

Hanover-Hill Inspiration

363162C EX-CAN EXTRA'90 *BR *TL
PTA -791M -8F -17P 99R 4/09
PTA +.28T -.54UDC -.88FLC TPI +797G

C Hanoverhill Star Roxy-ET

13689887 Excellent-92 EEEE 2E GMD DOM *6 STAR
4-05 3x 365d 31780 4.4 1394 3.3 1054
2-06 3x 365d 25925 4.6 1198 3.4 891
• Nom All-American Sr Yrlg Heifer 1988



MILK&HONEY ENCORE RAIZEL-ET EX-90 EEVEE
DAM OF LOT 91



HANOVER-HILL-R RAIZEL-ET EX-94 2E DOM
2ND DAM OF LOT 91



HANOVER-HILL-R ROXY RUSS-ET EX-94 3E GMD DOM
3RD DAM OF LOT 91

91

RAIZELS OUTSIDE ROXANN-ET

63177455
Born: September 12, 2006
2-07 2x 12d 702 6.1 43 2.8 20 RIP

Fresh: April 21, 2009

Comestar Outside-ET

6026421C EX-CAN GM 1/08 *TV *TL
PTA +567M +43F +4P 99R 4/09
PTA +5.1PL 2.98SCS +1.5DPR
PTA +2.02T +1.73UDC +2.18FLC 99R 4/09
GTPI +1650M

Milk&Honey Encore Raizel-ET

60098414 Excellent-90 EEVEE @ 3-07 *B/R
3-04 2x 325d 29840 3.9 1156 3.3 973
6-03 2x 361d 25730 4.5 1162 3.5 913
2-03 2x 321d 24070 4.6 1096 3.2 765

Ronnybrook Prelude-ET

392457C GP-81 GM 8/97 *TL
PTA -597M +33F -13P 99R 4/09
PTA -.17T -.47UDC +1.22FLC GTPI +1117M

Comestar L Or Black-ET

5311227C VG-87-CAN *16 STAR
3-11 2x 365d 35745 3.7 1325 3.0 1056
2-00 2x 365d 22871 3.8 866 3.1 700

Marcrest Encore

2048702 Excellent-96 GM 2/99 *TV *TL
PTA -476M -9F -13P 99R 4/09
PTA +1.89T +1.59UDC +.36FLC GTPI +1058M

Hanover-Hill-R Raizel-ET

15823548 Excellent-94 EEEEE 2E DOM
6-06 2x 365d 34670 4.3 1503 3.3 1190
9-04 2x 283d 30670 4.3 1314 3.2 989
3-10 2x 350d 24260 4.3 1033 3.5 844
2-06 3x 365d 24560 3.7 905 3.2 788
Life: 1545d 124380 4.3 5311 3.4 4221

3rd Dam

Hanover-Hill-R Roxy Russ-ET EX-94 3E GMD DOM

3-04 3x 365d 36930 4.2 1557 3.4 1250
Life: 2079d 167110 4.5 7490 3.5 5832

• 2nd Sr 3 Yr Old New York Sprng/Nat 1994

4th Dam

C Hanoverhill Star Roxy-ET EX-92 2E GMD DOM

4-05 3x 365d 31780 4.4 1394 3.3 1054 *6 STAR

• Nom All-American Sr Yrlg 1988

• Res All-American Produce of Dam 1997

5th Dam

Mil-R-Mor Roxette EX-90 GMD DOM *30 STAR

7-01 2x 365d 24530 4.7 1153

6th Dam

C Glenridge Citation Roxy EX-97 4E GMD *6 STAR

10-1 2x 365d 25280 4.2 1061

Life: 3620d 209784 4.5 9471

'Queen of the Breed I & II'

7th Dam

C Norton Court Model Vee EX-90 *6 STAR

7-09 2x 357d 20362 3.9 793

Life: 4183d 218629 3.9 8581

• All-American Produce of Dam 1977 to 1979

8th Dam

Norton Court Reflection Val VG-85 *5 STAR

8-11 2x 332d 20631 3.7 765

Life: 14 Lact 249583 3.7 9295