



BAYLESS DURHAM ABBY EX-94 EEVVEE 2E
SELLS AS LOT 95

95

Regancrest Elton Durham-ET

2250783 Excellent-90 GM 8/01 *TR *CV *TL
PTA +46M -23F +17P 99R 4/09
PTA +1.3PL 2.88SCS +0.6DPR
PTA +3.05T +3.08UDC +2.59FLC 99R 4/09
GTPI +1564M

Bayless Blackstar Amy

15335541 Excellent-94 EEEEE 4E DOM
7-05 2x 365d 35780 4.3 1525 3.1 1114
9-01 2x 365d 32700 3.7 1197 3.1 1029
6-00 2x 365d 30290 3.6 1102 3.2 983
4-07 2x 365d 28900 3.7 1076 3.3 952
11-8 2x 305d 24140 3.5 833 2.9 697
Life: 3132d 236770 3.9 9173 3.3 7719
• 1st 125,000 Lb. Cow Southern Sprg/Nat 2001
• Grand Champion Oklahoma State Show 1998

BAYLESS DURHAM ABBY

60243109 Excellent-94 EEVVEE 2E *TR *CV *BL *TD
Born: October 7, 2001 • Donor Dam
4-03 3x 365d 38760 4.2 1635 3.2 1239
6-07 2x 335d 35471 3.9 1373 2.9 1012 RIP
2-04 2x 365d 24110 3.2 763 3.3 792

Bred: March 9, 2009 to England-Ammon Million-ET

Emprise Bell Elton

1912270 Excellent-95 *CV *BL
PTA +262M +12F +17P 99R 4/09
PTA -.18T -.37UDC +1.75FLC GTPI +1121G

Snow-N Denises Dellia

12895802 Excellent-95 2E GMD DOM *TV *TL
6-00 2x 365d 35230 4.0 1425 3.0 1049
Life: 2558d 180240 3.9 7108 3.2 5723

To-Mar Blackstar-ET

1929410 Excellent-93 GM 1/96 *TV *TL
PTA -488M -19F -15P 99R 4/09
PTA +.48T -.05UDC -.01FLC GTPI +1021G

Bayless Dixiecrat Alice

13973518 Excellent-90 EEEEV 2E DOM
9-02 2x 337d 31960 3.4 1085 3.2 1008
11-9 2x 365d 30880 3.7 1138 2.9 886
5-08 2x 365d 28380 3.6 1021 3.3 948
4-07 2x 325d 24000 3.6 874 3.2 758
Life: 3351d 238050 3.7 8714 3.1 7292

• 4th 4-Yr-Old Cow WI District 7 Show 2006

Maternal sister to Abby

Bayless Boulet Angel EX-93 EEEEE 2E DOM

4-02 2x 365d 30130 3.4 1032 3.0 907

- All-Oklahoma Jr 2-Yr-Old Cow 1999
- All-Oklahoma Jr 3-Yr-Old Cow 2000
- Res All-Oklahoma 4-Yr-Old Cow 2001
- Sr Champion Kansas State Fair 2001
- 1st 4-Yr-Old Cow Kansas State Fair 2001

Ocean-View Dixiecrat

1856116 Excellent-97 GM *TL
PTA -963M -33F -26P 99R 4/09
PTA -.92T -1.43UDC -.48FLC GTPI +806G

Bayless Culombus Ada

13174249 Good Plus-83
6-01 2x 365d 25320 4.0 1005 2.9 746
4-10 2x 365d 26480 3.7 988 3.0 795
3-01 2x 365d 20910 4.2 882 3.1 648
Life: 1853d 115630 4.0 4640 3.1 3543



BAYLESS BLACKSTAR AMY EX-94 4E DOM
2ND DAM OF LOT 96

96

WILSTAR TRIBUTE AMBROSIA

64470398 *RC *CV *BL *TD
Born: June 1, 2008

Mr Rosedale-L Tribute-ET

135172667 Excellent-90 *RC *TV *TL
PTA -117M -11F +6P 96R 4/09
PTA +0.4PL 3.14SCS -0.1DPR
PTA +1.54T +2.68UDC -.29FLC 93R 4/09
GTPI +1263G

Bayless Durham Abby

60243109 Excellent-94 EEVEE 2E *TR *CV *BL *TD
4-03 3x 365d 38760 4.2 1635 3.2 1239
6-07 2x 335d 35471 3.9 1373 2.9 1012 RIP
2-04 2x 365d 24110 3.2 763 3.3 792
Sells as Lot 95

Maternal sister to Abby

Bayless Boulet Angel EX-93 EEEEE 2E DOM

4-02 2x 365d 30130 3.4 1032 3.0 907
• All-Oklahoma Jr 2-Yr-Old Cow 1999
• All-Oklahoma Jr 3-Yr-Old Cow 2000

Granduc Tribute-ET

6873798 VG-85-CAN EXTRA'02 *RC *TV *TL
PTA +438M +3F +16P 99R 4/09
PTA +1.24T +2.04UDC +.77FLC GTPI +1298M

Lavender Ruby Redrose-Red

7254370C Excellent-96 EEEEE 2E
7-04 2x 365d 52100 4.9 2576 3.4 1751
• *Supreme Champion World Dairy Expo 2005*

Regancrest Elton Durham-ET

2250783 Excellent-90 GM 8/01 *TR *CV *TL
PTA +46M -23F +17P 99R 4/09
PTA +3.05T +3.08UDC +2.59FLC GTPI +1564M

Bayless Blackstar Amy

15335541 Excellent-94 EEEEE 4E DOM
7-05 2x 365d 35780 4.3 1525 3.1 1114
9-01 2x 365d 32700 3.7 1197 3.1 1029
6-00 2x 365d 30290 3.6 1102 3.2 983
4-07 2x 365d 28900 3.7 1076 3.3 952
11-8 2x 305d 24140 3.5 833 2.9 697
Life: 3132d 236770 3.9 9173 3.3 7719
• *1st 125,000 Lb. Cow Southern Sprg/Nat 2001*
• *Grand Champion Oklahoma State Show 1998*

To-Mar Blackstar-ET

1929410 Excellent-93 GM 1/96 *TV *TL
PTA -488M -19F -15P 99R 4/09
PTA +.48T -.05UDC -.01FLC GTPI +1021G

Bayless Dixiecrat Alice

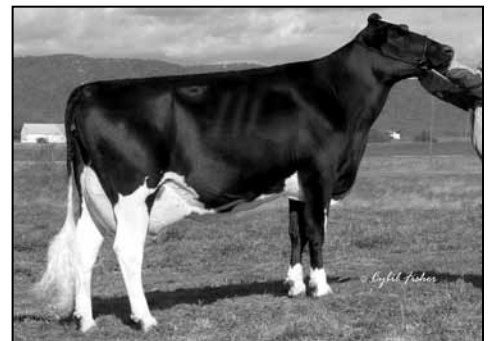
13973518 Excellent-90 EEEEE 2E DOM
9-02 2x 337d 31960 3.4 1085 3.2 1008
11-9 2x 365d 30880 3.7 1138 2.9 886
5-08 2x 365d 28380 3.6 1021 3.3 948
4-07 2x 325d 24000 3.6 874 3.2 758
Life: 3351d 238050 3.7 8714 3.1 7292



MISS SHOTTLE ALISON-ET
SELLS AS LOT 97



MS BMS DURABLE ADORABLE-ET EX-92 EEEEE
DAM OF LOT 97



BKB ALEXIS-LEE-ET EX-91 EEEEE 2E
2ND DAM OF LOT 97

97

WILSTAR HOLSTEINS & NATHAN GOLDENBERG

MISS SHOTTLE ALISON-ET

138900872
Born: November 11, 2007 • Donor Dam
P9 PTPI +1949

Bred: April 6, 2009 to Den-K Marshall LL Laurin

Picston Shottle-ET

GBR 598172 EX-95-GBR GM 8/08 *TV *TL
PTA +2165M +101F +63P 99R 4/09
PTA +4.0PL 2.66SCS -2.0DPR
PTA +4.20T +3.31UDC +3.10FLC 99R 4/09
GTPI +2269M

Ms BMS Durable Adorable-ET

135351464 Excellent-92 EEEEE @ 4-09 *TV
4-04 2x 348d 32647 4.5 1460 3.2 1058
2-04 2x 365d 27130 4.2 1176 3.5 954

Carol Prelude Mtoto-ET

6001001962 GM 1/08 *TV *TL
PTA +1061M +40F +21P 99R 4/09
PTA +.99T +.80UDC +1.16FLC GTPI +1641M

Condon Aero Sharon

5373153C EX-91-GBR
5-07 2x 305d 36230 4.3 1561 3.3 1179
4-00 2x 305d 25286 4.3 1508 3.4 1202

Regancrest Elton Durham-ET

2250783 Excellent-90 GM 8/01 *TR *CV *TL
PTA +46M -23F +17P 99R 4/09
PTA +3.05T +3.08UDC +2.59FLC GTPI +1564M

BKB Alexis Lee-ET

132277439 Excellent-91 EEEEE 2E *TL
5-04 2x 365d 33200 4.7 1559 3.4 1113
2-06 2x 365d 26790 4.0 1080 3.5 946

Embryos sell with Alison

SEVEN #1 & 3 #2 EMBRYOS

Sire: Golden-Oaks St Alexander-ET

3rd Dam

Shoremar S Alicia-ET EX-97 EEEEE 3E

6-10 2x 365d 35760 4.3 1544 3.4 1214
Life: 1596d 147400 4.3 6265 3.4 5012

- HHM All-Time All-American 5-Yr-Old Cow
- HHM All-American 125,000 Lb. Cow 2005
- Res All-American Aged Cow 2004
- All-American Aged Cow 2003
- Nom Queen of Breed 2003
- HHM All-American Aged Cow 2002
- Res All-Canadian Mature Cow 2002
- All-American 5-Yr-Old Cow 2000
- All-Canadian 5-Yr-Old Cow 2000
- Member All-American Produce of Dam 2000
- All-Canadian 4-Yr-Old Cow 1999
- All-Canadian Jr 2-Yr-Old Cow 1997

4th Dam

C Aitkenbrae Starbuck Ada EX-94 2E DOM

13-8 2x 365d 25150 3.0 764 3.4 843
Life: 1554d 105150 3.4 3600 3.4 3554

- All-American Produce of Dam 2000, 2001
- Res All-Time All-American Sr 3-Yr-Old
- All-American 3-Yr-Old Cow 1990
- Grand Champion Eastern National 1990