



**GLENN-ANN SHOTTLE PEPPER-ET VG-86 VG-MS**  
SELLS AS LOT 98



**GLENN-ANN DURHAM PEPPER EX-90 DOM**  
DAM OF LOT 98



**GLENN-ANN MISS PEPPERDINE VG-89 DOM**  
2ND DAM OF LOT 98

# 98

**Picston Shottle-ET**

GBR 598172 EX-95-GBR GM 8/08 \*TV \*TL  
PTA +2165M +101F +63P 99R 4/09  
PTA +4.0PL 2.66SCS -2.0DPR  
PTA +4.20T +3.31UDC +3.10FLC 99R 4/09  
GTPI +2269M

**Glenn-Ann Durham Pepper**

133197709 Excellent-90 EX-MS DOM \*TV  
CTPI +1910  
5-00 2x 365d 35261 4.2 1463 3.5 1220"  
2-01 2x 365d 30790 4.2 1291 3.3 1031

Maternal brother of Pepper

**Glenn-Ann Pendleton** TPI +1612 +2.64T @ ABS

**GLENN-ANN SHOTTLE PEPPER-ET**

137378470 Very Good-86 VG-MS @ 3-00  
Born: February 17, 2006 • Donor Dam  
CTPI +2135 PTA +2038M +97F +63P +3.25T  
1-11 2x 365d 33190 4.4 1463 3.3 1083

Fresh: April 28, 2009

**Carol Prelude Mtoto-ET**

6001001962 GM 1/08 \*TV \*TL  
PTA +1061M +40F +21P 99R 4/09  
PTA +.99T +.80UDC +1.16FLC GTPI +1641M

**Condon Aero Sharon**

5373153C EX-91-GBR  
5-07 2x 305d 36230 4.3 1561 3.3 1179  
4-00 2x 305d 25286 4.3 1508 3.4 1202

**Regancrest Elton Durham-ET**

2250783 Excellent-90 GM 8/01 \*TR \*CV \*TL  
PTA +46M -23F +17P 99R 4/09  
PTA +3.05T +3.08UDC +2.59FLC GTPI +1564M

**Glenn-Ann Miss Pepperdine**

129570185 Very Good-89 EX-MS DOM  
4-05 2x 365d 40610 4.6 1858 3.4 1394  
6-09 2x 365d 34336 4.4 1521 3.3 1121"  
2-04 2x 365d 31030 4.1 1271 3.4 1045  
Life: 1992d 159000 4.5 7103 3.6 5674

• Five Mac sons in AI & embryos exported

**98 1/2 HEIFER CALF-ET**

Due: May 22, 2009  
Sire: Robthom Moscow-ET

**98 1/4 HEIFER CALF**

Born: April 28, 2009  
Sire: Robthom Moscow-ET

4th Dam

**Wilcoxview Blackstar Pepper VG-85 GMD DOM**  
5-09 2x 365d 31100 4.1 1285 3.2 980  
Life: 1901d 149000 3.9 5848 3.2 4765

5th Dam

**Wilcoxview Chief Mark Pepper VG-87 VG-MS**  
5-04 3x 336d 25990 4.8 1253 3.2 834

**Startmore Rudolph-ET**

5470579C EX-CAN GM 2/04 \*TV \*TL  
PTA +865M +16F +26P 99R 4/09  
PTA +.88T +.94UDC -.54FLC GTPI +1535M

**Wilcoxview Perfec Formation**

120226502 Very Good-87 VG-MS @ 4-07  
2-03 2x 365d 30040 3.9 1162 3.2 957  
3-06 2x 305d 29650 3.9 1158 3.2 945  
5-05 2x 305d 26760 3.6 963 3.1 823  
Life: 1413d 115180 3.9 4519 3.3 3788



**FOUR-OF-A-KIND ROY REBA-ET EX-92 EEEEE**  
DAM OF LOT 99



**FOUR-OF-A-KIND EMRY ENVY-ET EX-92 3E GMD DOM**  
2ND DAM OF LOT 99

# 99

CALLIE & BRITNEY OTT

## FOUR-OF-A-KIND SHOT SILK-ET

137382387

Born: March 13, 2006

P9 PTP1 +1899 PTA +3.46T +3.40UDC 4/09

2-09 2x 133d 11813 4.0 469 3.1 368 RIP

Bred: Feb. 24, 2009 to Golden-Oaks St Alexander-ET

### Carol Prelude Mtoto-ET

6001001962 GM 1/08 \*TV \*TL

PTA +1061M +40F +21P 99R 4/09

PTA +.99T +.80UDC +1.16FLC GTPI +1641M

### Condon Aero Sharon

5373153C EX-91-GBR

5-07 2x 305d 36230 4.3 1561 3.3 1179

4-00 2x 305d 25286 4.3 1508 3.4 1202

### Roylane Jordan-ET

17064727 Excellent-95 GM 2/04 \*TV \*TL

PTA +49M +7F -1P 99R 4/09

PTA +2.95T +2.83UDC +.86FLC 99R GTPI +1380M

### Four-Of-A-Kind Emry Envy-ET

15871273 Excellent-92 EEEEE 3E GMD DOM \*CV

4-01 2x 365d 38380 4.2 1600 3.1 1184

7-00 3x 365d 38090 3.4 1277 3.0 1146

2-01 2x 365d 30630 4.3 1315 3.2 980

Life: 1905d 149310 4.0 5939 3.2 4820

*Full brother to Silk*

**Four-Of-A-Kind Stl Saint-ET @ Select Sires**

*Full sister to Silk*

**Four-Of-A-Kind Shottle Star-ET VG-88**

2-02 3x 362d 34073 4.1 1410 .9 990

• *Multiple AI contracts*

*4th Dam*

**Holtex Steady Milker-ET VG-85 VG-MS DOM**

3-01 2x 365d 25610 4.0 1035 3.3 853

*5th Dam*

**Holtex Nugget P Milky EX-90 EEEV GMD DOM**

3-03 2x 365d 30350 4.0 1222 3.2 963

*6th Dam*

**Holtex Elevation W Peggy VG-85 GMD DOM**

6-09 2x 305d 23390 3.6 847

Life: 3592d 234220 3.1 7304

### Picston Shottle-ET

GBR 598172 EX-95-GBR GM 8/08 \*TV \*TL

PTA +2165M +101F +63P 99R 4/09

PTA +4.0PL 2.66SCS -2.0DPR

PTA +4.20T +3.31UDC +3.10FLC 99R 4/09

GTPI +2269M

### Four-Of-A-Kind Roy Reba-ET

132905664 Excellent-93 EEEEE 2E \*TV

4-01 2x 365d 34800 3.7 1290 3.1 1087

5-07 2x 365d 32080 3.7 1198 3.2 1019

2-05 2x 365d 26350 3.6 949 3.3 868

Life: 1383d 112020 3.8 4207 3.3 3655

• *Grand Champion WI District 4 Show 2007*

### MJR Blackstar Emory-ET

2114601 Excellent-97 GM 2/00 \*TV \*TL

PTA +507M -15F -1P 99R 4/09

PTA +1.67T +1.40UDC +1.68FLC GTPI +1206M

### Holtex S-Wind Milki-ET

14251802 Excellent-91 EEEVE 3E GMD DOM

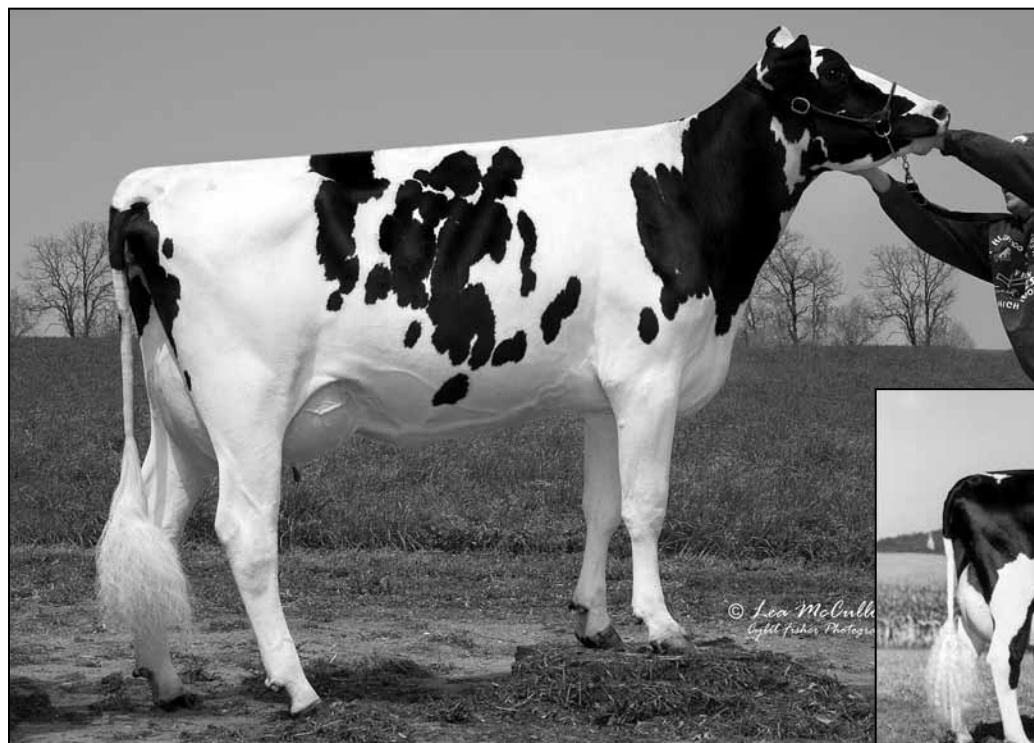
3-05 2x 365d 30290 3.7 1106 3.1 924

5-04 2x 365d 29490 3.6 1049 3.2 930

6-08 2x 365d 28120 3.4 969 3.1 879

8-01 2x 340d 27870 3.6 1002 3.0 836

Life: 2125d 155720 3.6 5613 3.2 4924



**JENNY-LOU SHOTTLE 1893-ET VG-87 VG-MS**  
SELLS AS LOT 100



**JENNY-LOU PATRON TOYANE VG-89 VEEEV**  
2ND DAM OF LOT 100

# 100

WILSTAR, MYSTIC VALLEY & KE-JO HOLSTEINS

## JENNY-LOU SHOTTLE 1893-ET

62437983 Very Good-87 VG-MS \*TR \*TL \*TD  
Born: February 8, 2006 • Donor Dam  
CTPI +1978 +1930M +101F +49P +3.51T 4/09  
2-01 2x 365d 34984 4.7 1651 3.1 1069

Full brother to Lot 100

### Jenny-Lou Shottle Trump-ET

• #3 GTPI Bull of Breed 1/09

### Picston Shottle-ET

GBR 598172 EX-95-GBR GM 8/08 \*TV \*TL  
PTA +2165M +101F +63P 99R 4/09  
PTA +4.0PL 2.66SCS -2.0DPR  
PTA +4.20T +3.31UDC +3.10FLC 99R 4/09  
GTPI +2269M

### Jenny-Lou Marshall 0618-ET

60435703 Very Good-88 VG-MS GMD \*TR  
3-01 3x 365d 36910 3.7 1369 3.0 1110  
2-01 2x 289d 24700 3.9 962 3.1 764

Full brothers to Marshall 0618

Jenny-Lou Marshall P149-ET VG-88 TPI +1685G

Jenny-Lou Mrshl Toystory-ET TPI +1837M

### Carol Prelude Mtoto-ET

6001001962 GM 1/08 \*TV \*TL  
PTA +1061M +40F +21P 99R 4/09  
PTA +.99T +.80UDC +1.16FLC GTPI +1641M

### Condon Aero Sharon

5373153C EX-91-GBR  
5-07 2x 305d 36230 4.3 1561 3.3 1179  
4-00 2x 305d 25286 4.3 1508 3.4 1202

### Mara-Thon BW Marshall-ET

2290977 Very Good-86 GM 8/07 \*TV \*TL  
PTA +1654M +34F +38P 99R 4/09  
PTA +2.27T +2.16UDC +2.87FLC GTPI +1570M

### Jenny-Lou Patron Toyane

17313307 Very Good-89 VEEEV GMD DOM  
4-05 3x 365d 45826 3.8 1749 3.3 1506  
2-09 2x 365d 37830 4.0 1509 3.3 1258  
Life: 1704d 160053 4.0 6329 3.3 5376

## 100 1/2

### MISS LIGHTNING JENNA

66731639 • Born: March 27, 2009

Sire: Lylehaven Lightning-ET

### Brabant Star Patron-ET

2160458 Excellent-92 GM 8/03 \*TV \*TL  
PTA +328M +18F +18P 99R 4/09  
PTA +.59T +1.29UDC -1.23FLC GTPI +1283M

### Jenny-Lou Luke Takia

15749666 Very Good-86 VVEEV @ 4-03  
2-09 2x 365d 31390 3.4 1082 3.4 1054  
1-09 2x 289d 21540 3.7 797 3.3 708