

# VW-River Falls Falcon Premier

JOIN AMERICA'S LARGEST DAIRY CLUB ON



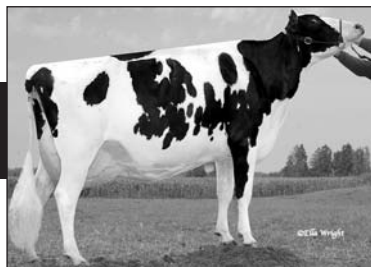
**SIEMERS FVR HAYA-PRIDE-ET**

Don't miss this very stylish 9/11 Fever selling from Siemers Dundee Haya EX-92 47,200, Nom All-American Fall Yrlg and Jr All-American Fall Yrlg 2008. Next dam EX-91 GMD DOM Durham with 61,150 2241 1821, then 5 more VG/EX. *Siemers 920.693.3600*



**STRANSHOME DUNDEE DAISY**

*All-American Winter Calf 2010*  
A 6/11 Dundee full sister to Daisy sells. Their dam is a VG-88 VVVEE Stormatic sister to 2X WDE Supreme 2E-96 Paradise. Next dam EX DOM Broker Pansy with 41,460 1535 1385 and 2E-94 DOM Mark Patty.  
*Stransky 507.444.0071*



**VANDYK-K GIBSON PAISLEY-ET**

**2E-94 EEEEE**  
3-09 3x 365 39,330 6.4 2517 2.9 1154  
A 9/11 Palermo sells from her VG-86 VVVVV Advent with 29,980 2Y. Paisley is from a 3E-92 Integrity with 207,000 LT, full sister to All-American Paradise 2E-96 DOM.  
*Milk Source 920.766.5335*



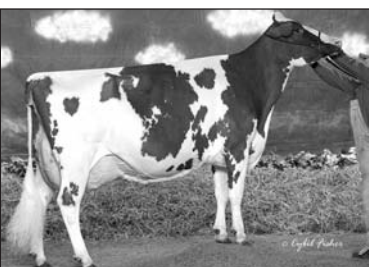
**BUDJON REDMARKER DESIRE \*RC**

**3E-96 EEEEE GMD**  
5-03 2x 365 47,540 4.2 1998 2.9 1394  
*1st 5 Yr Old & Grand Champion WDE 2005 All-American 2005 • Res All-American 2007*  
Her 9/11 \*RC Camden dtr sells. Next dams are 3E-92, 2E-90 & EX.  
*Budjon Farms & Vail 920.488.4129*



**QUALITY-RIDGE CHAMP HOPE**

**EX-91 EEEEE**  
2-2 2x 365 27,220 3.3 897 3.2 869  
Don't miss her 3/10 Laurin due in April with a Lauthority hfr. 2nd dam is 2E-96 2X All-American Hazel, the only cow in history to be nominated All-American seven consecutive times in milking form!  
*Kasten 920.754.4828*



**GREENLEA RUB MARLENE-RED-ET**

**3E-94 EEEEE**  
3-07 2x 365 35,390 4.0 1410 3.3 1175  
*3X All-American R&W • 2X Reserve*  
Marlene is a 4th gen EX from 2X AA R&W Marker Mandy 3E-94 & AA R&W Marcy. A 3/11 \*RC Deuce sells from her VG-86 VVVVV Advent. *Bella-View Holsteins 920.420.1524*



**RED-VISION DIS DELLA-RED-ET**

**3E-91 EX-MS GMD**  
2-05 2x 365 33,080 3.9 1279 3.2 1057  
*All-American R&W Sr 2 Yr Old 2005 Int & Res Grand Champion WDE 2005*  
Choice of 3 Destry hfrs due 9/12 sells from Della. Next dams 3E-91 DOM, EX GMD, 3E-91 GMD DOM. *Premium Star 936.523.0610*



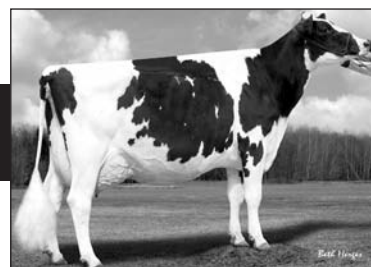
**L-MAPLES KITE SUGAR-RED**

**2E-91 EEVVE**  
3-01 2x 365 32,526 4.3 1385 3.2 1036  
A 12/10 RED Lawn Boy sells with 8 VG/EX dams, from Sugar's VG-86 VVVVV 2Y Talent. Sugar is from an EX Rubens, EX-91, then All-American R&W Centra Selsy-Red 2E-91.  
*Huppert Bros 715.426.5095*



**CASTLEHOLM ALLEN RAINA**

**EX-91 EEVVE**  
4-03 3x 365 36,100 3.2 1148 3.2 1162  
Her 6/11 Laramie sells as a potential 16th gen EX! Raina is from 2E-91 GMD Stormatic Radiant with 49,840 2087 1437, 2E-92 Rebel with 48,580 2021 1468, and 2E-91 Rosa 41,000. *Bremer Holsteins 715.452.5144*



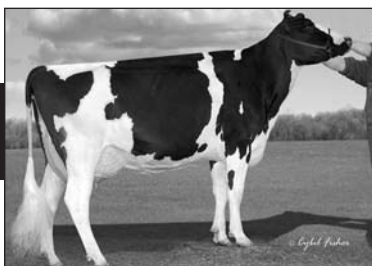
**CASTLEHOLM PIERCE TONYA-ET**

**2E-91 EEEEE**  
4-00 2x 365 30,310 4.4 1321 3.4 1028  
A 1st choice sells from her Durham scored VG-86 VVVVV 1st lact. She's fresh again and could be a 15th gen EX Rosa!  
*Pierce 608.378.4968*



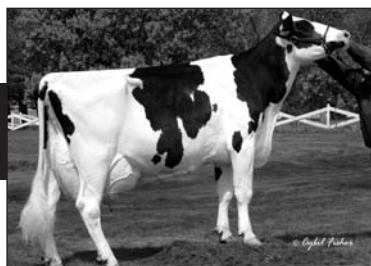
**LARCREST SS CALAMITY**

**2E-90 EEVVE**  
4-9 2x 365 27,010 4.5 1215 3.1 849  
A 4/11 red Destry sells from her young Lawn Boy dtr. Calamity is from an EX-91 Durham with 31,480 and a VG-86 Rudolph.  
*Larcrest 507.852.2273*



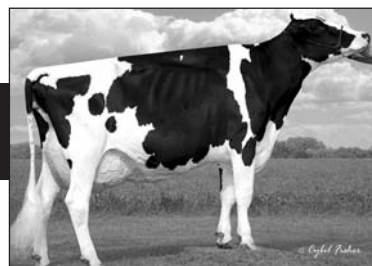
**ERNEST-ANTHONY TAMI-ET**

**2E-92 EEEEE**  
5-07 2x 365 44,590 4.5 2017  
Her 6/11 Atwood sells. 2nd dam is All-Can SD Tobi 3E-96 DOM with 44,090 2191 1506, then 2X Res All-American 2E-95 GMD DOM Inspiration Tina. *Premium-Star 936.523.0610*



**MI-RO-ZE RUBYTOM METRO \*RC**

**EX-90° VEVEE GMD**  
5-09 2x 365 39,920 3.5 1394 3.2 1295  
A 6/10 \*RC Reality sells due in June to Colt-P from Metro's VG-87 GMD DOM Rudolph with sons in AI. Next 4 of 5 dams VG and EX.  
*Sauber 952.469.4341*



**MS LEDUCD ADD E**

**2E-93 EEVVE**  
3-08 2x 365 23,050 4.7 1079 3.6 838  
A 6/11 Shot Future sells from Add E's EX EVEVE Stormatic. Next dams 2E-94 DOM Chief Adeen and 2E-94 DOM Ada.  
*Harsdorf 715.425.2138*



**MEAD-MANOR RUBENS CLARA-TW**

**2E-90 EX-MS**  
6-08 3x 365 45,420 3.5 1590 3.1 1428  
Clara has 195,000 LT and her 9/11 Braxton sells. Next dams a VG-88 EX-MS Integrity with 158,000 LT, then 3E-92, EX, and VG.  
*Moede 920.837.7704*



**NOVA-TMJ ELEGANT ENDURE-ET**

**VG-87 VG-MS**  
2-2 2x 365 30,040 3.7 1101 3.0 914  
An Elegant from VG-87 GMD DOM Eroy. Endure's GTPI +1912 Otto sells due in Sept to Fever.  
*Nova 715.760.0055*



**LANGS-TWIN-B ELITE FUDGE-ET**

**EX-90 EEEEE**  
3-10 2x 365 34,700 3.4 1177 3.2 1111  
Selling a choice of 4 Fever pregs due in June from this 8th gen EX Elegance by Durham.  
*Windle 715.785.7753*



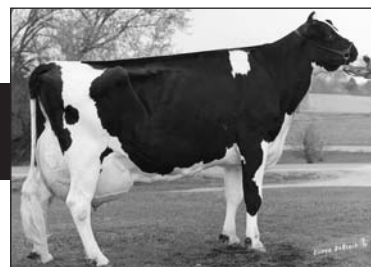
**GEORGEFARM JASPER EVALYN-ET**

**VG-87 VVVVV 2Y**  
2-06 2x 136 9,640 3.6 345 3.2 305  
Her 4/11 Jordan sells. Evalyn is from a 2E-90 Encore with 35,910, then Elegance.  
*Stetzer 715.964.8810*



**KRULL ELEGANT ROSE-ET**

**2E-93 EEEEE GMD DOM**  
6-00 2x 365 35,770 4.0 1446 3.3 1167  
A fancy full-aged 6/11 Alexander sells. Dam is a GP clone of Krull Encore Elsie EX-92 HM All-American, then Rose and Elegance.  
*First Glance 608.488.2260*



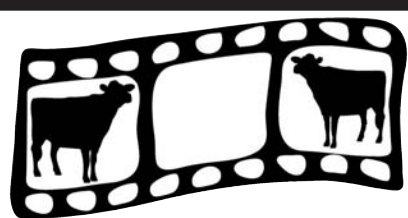
**HONEYCREST OHIO RAINBOW-ET**

**2E-92 EEEEE GMD DOM**  
5-01 2x 365 40,450 3.7 1489 3.1 1251  
A Mahogany sells bred from Rainbow's VG Air Magna with 34,650 1393 1066. Rainbow is backed by 4 gens of VG.  
*Coyne 715.772.3373*

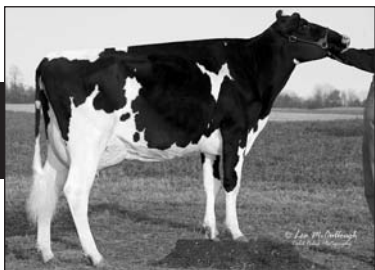
## More Opportunities

- 3/10 Shottle due end of March to Bowser with an ultrasounded heifer. Dam is a GP-82 VG-MS 2Y Baxter from an EX-92 EX-MS Goldwyn, a 6th gen EX and 12th gen VG/EX. *Lexvold 651.923.4701*
- Talent due in March to Redliner. Dam a VG-86 VG-MS 33,710 Morty, then VG-89 EX MS GMD with 47,240 and 203,570 LT and 2 more VGs. *Newman 715.294.2957*
- 9/10 Lightning due in Sept to Braxton. Dams a VG VG-MS 2Y Allen, VG-87 Durham, EX Roy. 10 of 11 gens are VG/EX. *Sawall 715.823.6620*
- 12/10 Shottle from a VG-86 VG-MS Advent with 7 EX dams from the Wimpys: EX 32,000, 2E-90, 2E-92 1366F, 2E-92 189,000 LT, 2E-90 DOM 190,000 LT, 5E-95 GMD DOM 300,600 13,227F LT, 3E-93 GMD DOM 267,000 11,300F LT. *Johnson 715.294.3422*
- Fancy 8/11 Fever from a 2E-93 Finest with 33,800, then 11 of 12 gens VG/EX. The Papoose family! *Crisdhome 715.248.3214*
- 10/11 SS Deuce from a GP Alanta, then a 2E-90 Durham and VG-88 Storm. *Lakecrest 715.268.7577*
- A choice of amazing full-aged 3/11 AltaAmazing twins. Dam is a GP-82 VG-MS Allen, then a VG-88 EX-MS Durham and VG-87 Rubens. *Demmer 507.684.9629*
- Deann due in June to Atlas from a VG VG-MS Lheros with 32,240 1298 1033, VG Leduc, and 4 EX dams. *Mayer 262.644.5668*
- Red 3/11 Lawn Boy from a VG-88 Adam with 121,000 LT and EX grandam with 172,000 LT. *Heins 715-417-0970*
- Stylish Dec Atwood calf from a GP-83 VG-MS 2Y Roy that will be rescored before the sale. Next dam VG-88 VG-MS Outside, VG-88 EX-MS Milan, then 3E-90 204,000 LT. *Demmer 507.684.9629*
- Red 9/11 Debonair from a VG-88 VG-MS Advent and a VG-87 Red-Marker. *Zwiefelhofer 715.568.4970*
- Sanchez due in August to Alchemy. Dams an EX-91 EEEVE Durham, VG-89 EX-MS, then 7 of 8 gens VG/EX. *Shiloh Dairy 920.371.4403*
- 12/11 Redliner from a 3E-94 EEEEE Lee with 30,990 1422 1031, then a VG-89 EVVEV Storm. *Post 605.693.6393*
- Shottle Fall Calf from a 2E-90 VEVEE Journalist with 154,000 LT, then a GP-83 Rudolph, 2E-90 with 180,800 LT, and VG-88. *Kas-Bro 920.754.4828*

# Featuring over 50 lots of Holstein Heifers!



SATURDAY, MARCH 3, 2012 · 12:00 NOON · RIVER FALLS, WISCONSIN



**SCIENTIFIC ROY DELICATE-ET \*RC  
EX-91 EEEVV**

4-3 2x 365 38,640 4.5 1741 3.5 1340  
An 8th gen EX Roxy from EX-92 GMD DOM All-American Debutante herself. Her 9/11 Fever sells! *Nunes 715.288.5838*  
A 3/11 Redman sells from a GP-84 Radius, then 7 EX Roxys. *Squires 715.664.8407*

**MS-CAVA-LANES GOLD DEBRA-ET  
VG-88 VG-MS DOM**

3-11 2x 365 30,410 3.6 1088 3.0 919  
Her 5/10 Dotson heifer sells due in April to Observer. Debra is a Goldwyn from a VG Outside, then a 2E-90 GMD DOM Rudolph, VG-88 GMD DOM, and 2E-95 GMD DOM Dellia herself. *Cavanaugh 920.905.4702*

**LARCRESCT CONSTANCE-ET  
VG-85 VG-MS 2Y • GTPI +2066**

2-0 2x 305 24,070 4.1 978 3.3 798  
A Mac from EX GMD DOM Champagne, then 3E-93 GMD DOM Juror Chanel. Her 6/11 lota sells GTPI +2210! *Johnson 715.684.3208*  
Also selling a 6/10 Absolute bred to Attitude from Constance's VG-86 VG-MS Lou sister. *Nelson 715.307.1804*

**SIPKA DURHAM TABOO-ET  
2E-91 EEEVV**

5-05 2x 365 38,000 3.4 1278 3.1 1192  
Taboo's 12/10 Shottle sells. Taboo is from a 3E-90 36,370 Encore, 2E-90 Inspiration with 38,710, 2E-90 GMD DOM, 3E-94 GMD DOM, and 3E-95 DOM. *Post 605.693.6393*  
Also selling a 6/11 Dundee from Taboo. *Prairie Gold 605.864.1422*

**ROYOLA GOLD BLAZE-ET  
EX-90 VEVVE 3Y**

3-5 3x 365 36,660 4.5 1640 3.5 1287  
1st choice of 2 Domain hfrs due 1st week of March sells. Next dams VG-89 Sept Storm, 2E-94 Durham Velma, Broker Vidalia EX-94 GMD DOM & 3E-92 GMD DOM, all +34,000M. Show style! *Housner 608.341-8983*



**GREEN-CORNER BAX MAGNA-ET  
VG-88 VVVVV**

3-0 3x 338 34,344 3.8 1288 3.1 1071 Inc  
Her Million sells due in July to Braxton. Magna is a 10th gen VG/EX from an EX Throne with 35,830 1366 1149, 2E-92 GMD Durham Mae 2002F, and 3E-95 GMD Lead Mae. *Mayerlane 715.568.3678*

**HENDEL BOLVAR MAREE 2638-ET  
VG-87 VG-MS**

2-3 2x 365 27,630 4.1 1146 3.5 957  
Her 4/11 GTPI +2060 Larcresc Custom sells. Next dams a VG-88 GMD DOM Shottle with 37,400, then Durham Mitzi EX GMD DOM 42,000, VG-88 DOM 42,000, and VG. *Buehring 763.464.2333*

**ERNEST-ANTHONY SC VIVIAN  
4E-96 EEEEE**

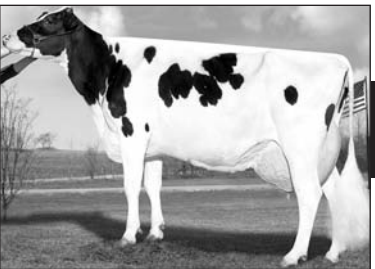
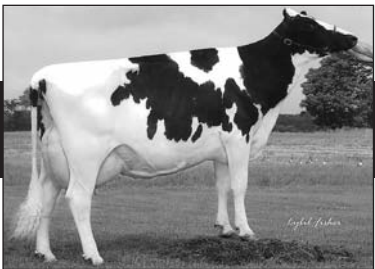
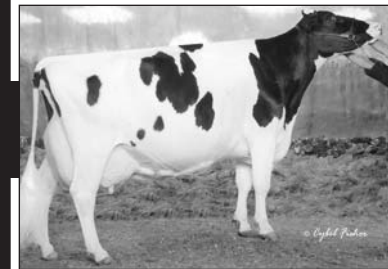
8-03 2x 365 44,310 4.6 2059 3.3 1445  
*All-American 125,000 Lb Cow 2007*  
A Dundee sells due in Sept to Atwood from her VG-87 EX-MS Titan. Vivian is from All-American and All-Canadian 2E-94 CC Vivian. *Post 605.693.6393*

**NORTHROSE SKYCHIEF ROSARIO-ET  
EX-92 EEEVV**

4-4 2x 365 36,600 4.5 1654 3.3 1184  
A 9/11 Lightning sells from her VG Rubens. Rosario is a maternal sister to WDE Supreme Redrose 2E-96 and they are 5th gen EXs, including 3E-96 GMD DOM Blackrose. *Rosedale 608.584.5853*

**WILLOWS-EDGE A JET PEBBLES  
3E-93 EEEEE**

8-10 2x 365 32,690 5.3 1730 3.4 1112  
A Hvezda sells due early Sept to Barbwire & could be a Milking Yrlg for the fall shows! Dam is Pebbles' VG-87 Kite with 32,000 5.3 1704 3.5 1110 & 6th gen VG/EX. High components! *Willows Edge 715.246.6806*



**CARLOW LEADER 174  
3E-96 EEEEE**

5-10 2x 365 41,270 3.4 1416 3.1 1296  
*All-American Jr 3 Yr Old 2000*  
*Res All-American Aged Cow 2004*  
A 12/10 Jasper sells from her EX-91 EEEEE Sept Storm. *Pfaff & Wide Open 715.964.8300*

**BRICCOWS ROY FIESTA  
EX-92 EEEEE**

5-01 2x 304 30,440 4.2 1269 3.3 991  
Her 12/11 Guthrie sells. Fiesta is from a 2E-94 Emory with 38,730, VG-89 with 32,270, VG-87 34,040, 2E-90 31,140 and VG. That's 5 gens over 30,000! *Milk Source 920.766.5335*

**EK-OSEEANA MASON ASHLEY  
EX-90 EEEVV 3Y**

3-01 2x 335 32,100 3.7 1196 3.3 1050  
A 6/11 Alexander sells. Her dam is Ashley's VG-86 VG-MS 2Y Durham who already has two EX full sisters. Next dam All-American Ashlyn 2E-96 GMD DOM. *Bartz 715.265.4409*

**MORNINGVIEW GLDWN LIDIA-ET  
VG-87 VVVVE DOM**

2-1 2x 365 33,220 4.0 1314 3.4 1119  
Dam is VG-88 GMD BWM with 32,390, then 6 more VG and EX, back to Elevation Lou. Selling Lidia's 10/10 Freddie GTPI +2065. *Johnson 715.684.3208*

**HONEYCREST OUTS THRILLER-ET  
EX-90 EX-MS**

4-10 2x 365 38,550 3.9 1495 2.8 1082  
Her stylish 3/11 Atwood sells. Thriller is from VG-87 GMD DOM Patron Tanya, then 2E-90 GMD DOM, EX GMD DOM, VG-88 DOM, and EX. The Kathryns! *Traynor 715.778.5860*



**JOHNNAN FORBIDDEN GLEE-ET  
2E-90 EEEVV**

3-09 2x 365 44,914 4.5 2036 3.3 1502  
A 4/11 Mac sells from Glee's GP-84 VG-MS Durham. Glee is an 8th gen VG/EX from 3E-94 GMD DOM Rudolph Ginger with 47,860 1462 1366. *Harsdorf 715.425.2138*

**OPSAI RUDOLPH SADIE-ET  
2E-92 VEEVE GMD DOM**

5-10 2x 365 38,120 4.8 1847 3.5 1317  
A stylish 5/11 Jeeves sells from Sadie's VG-86 VG-MS 2Y Shottle with 30,540 1391 1017 2Y, who is a 9th gen VG/EX. *Opsal 608.437.5415*

**TOPP-VIEW ASTRE TRIXIE  
3E-94 EEEEE GMD**

7-06 2x 365 41,720 4.0 1685 3.3 1382  
A 6/11 red Redliner sells from her EX EEEVE Advent, a 4th gen EX. *Lauber 262.878.1304*

**SCOTTIERE LEA CHAMPION-ET  
EX-92 EEEVV**

3-10 2x 365 42,784 3.2 1380 3.2 1360  
Don't miss her 9/10 Dundee selling. Lea is a 5th gen EX. *Milk Source 920.766.5335*

**ALGONQUIN LORENZO SKYLARK  
EX-92 EEEVV 4Y**

2-00 2x 365 21,259 3.6 763 3.3 694  
Her 12/10 Durham dtr sells. *Sco-Lo and Schmidt 563.542.7104*

**TANDE EMORY MARIE  
2E-92 EEEVV**

5-04 2x 365 35,520 3.1 1096 3.0 1082  
A 7/11 Roy sells from Marie's EX Dundee. Next dams a 2E-92 Linjet with 32,970 1118 1067, then VG-86 VG-MS. *Tande 507.451.2584*



## Location

UWRF Mann Valley Lab Farm  
Located 2.5 miles west  
of River Falls' Main Street on Cty Rd MM

## Schedule of events

11:00 Complimentary lunch  
11:45 Worker Auction to benefit the UWRF dairy judging team  
NOON - FALCON PREMIER SALE

## Sales Force

Tom Morris .....320.267.8795  
Jim Powers .....715.308.2109  
Mark Rueth .....920.988.3070  
Carla Stetzer .....608.434.4104  
Brenda Gilbertson .....608.574.2855  
Katie Bue .....715.299.2211

For additional information contact  
**University of Wisconsin-  
RIVER FALLS DAIRY CLUB**

SARA LARSON  
507.461.0958 cell • sara.larson-1@my.uwrf.edu  
BRYNN KASTEN  
920.851.1293 cell • brynn.kasten@my.uwrf.edu  
www.uwrf.edu/dairy\_club

329 S. Keller Ave.  
P.O. Box 6400  
Amery, WI 54001  
Assisted by:  
**morris**  
Tom Morris Ltd. sales@tommorrisltd.com  
Ph: 715-268-2629  
Fax: 715-268-6239  
catalog will be online at www.tommorrisltd.com